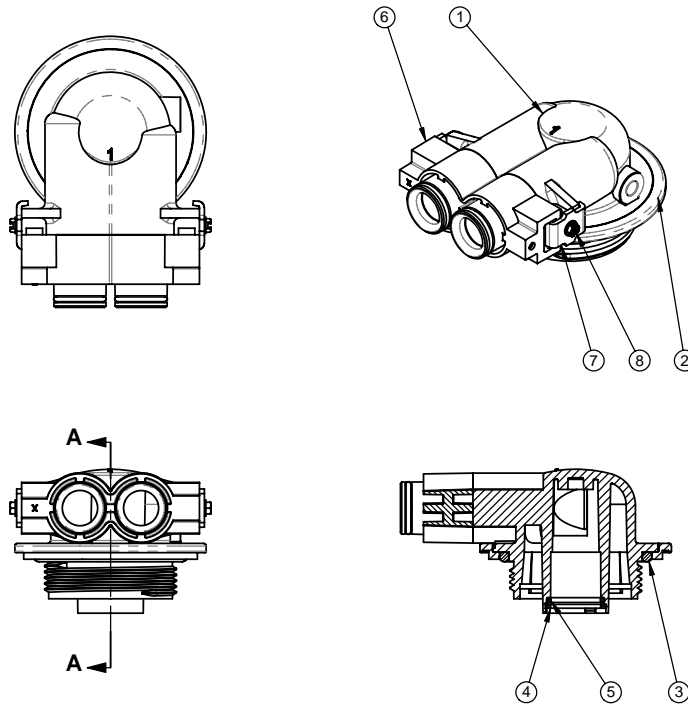


ITEM	19242-01		19242-02		19242-03		19242-04	
	PART NO.	QTY	PART NO.	QTY	PART NO.	QTY	PART NO.	QTY
1	19024-12	1	19024-22	1	19024-12	1	19024-22	1
2	18569	1	18569	1	18569	1	18569	1
3	BR18303-01	1	BR18303-01	1	BR18303-01	1	BR18303-01	1
4	BR13030	1	BR13030	1	BR13030	1	BR13030	1
5	BR13304	1	BR13304	1	BR13304	1	BR13304	1
6	N/A	0	N/A	0	19497	1	19497	1
7	N/A	0	N/A	0	BR13255	2	BR13255	2
8	N/A	0	N/A	0	BR13314	2	BR13314	2

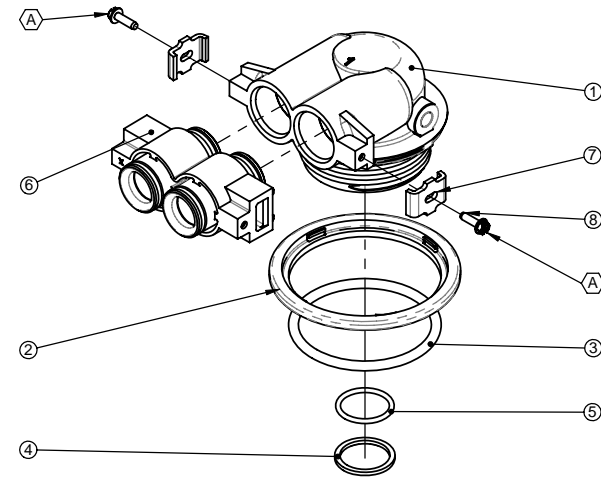
SPARE PARTS ONLY
UNTIL 01 JANUARY 2011
SEE ECO F526



SECTION A-A

REVISIONS					
ZONE	ECN	REV.	DESCRIPTION	DATE	APP'D
	11516	A	REDRAWN ON SOLIDWORKS, UPDATED DESIGN, ADDED TORQUE SPECS	12-02-03	STM

ITEM NO.	QTY.	PART NO.	DESCRIPTION
1	1	19024-12	ADAPTER, NO. 1 TANK
2	1	18569	RETAINER, TANK SEAL
3	1	BR18303-01	O-RING, -336, 560CD
4	1	BR13030	RETAINER, DISTRIBUTOR TUBE O-RING
5	1	13304	O-RING, -121
6	1	19497	SPACER ASSEMBLY
7	2	BR13255	CLIP, MOUNTING
8	2	BR13314	SCREW, HX WASHER HEAD, 8-18 X .60



TORQUE CALLOUT	MINIMUM ASSY TORQUE	MAXIMUM ASSY TORQUE
A	13.0 IN-LB (1.47 N-m)	20.0 IN-LB (2.25 N-m)

TABLE 1. ASSEMBLY TORQUE SPECIFICATIONS

NOTES:

1. HEXAGONAL BALLOONS DENOTE ASSEMBLY TORQUE REQUIREMENTS. REFER TO TABLE 1. FOR TORQUE SPECIFICATIONS.

ASSEMBLY INSTRUCTIONS:

- ASSEMBLE THE TANK SEAL RETAINER (ITEM 2) AND DISTRIBUTOR O-RING RETAINER (ITEM 4) IN THE TANK ADAPTER BODY (ITEM 1).
- ASSEMBLE THE O-RINGS (ITEM 3 AND ITEM 5) INTO THE TANK ADAPTER BODY (ITEM 1).
- ASSEMBLE THE EXTENSION ADAPTER ASSEMBLY (ITEM 6) INTO THE TANK ADAPTER BODY (ITEM 1) AS SHOWN - ASSEMBLY PART NUMBERS 19242-03 AND 19242-04 ONLY.
- SECURE THE EXTENSION ADAPTER ASSEMBLY (ITEM 6) TO THE TANK ADAPTER ASSEMBLY (ITEM 1) WITH CLIPS (ITEM 7) AND SCREWS (ITEM 8) - ASSEMBLY PART NUMBERS 19242-03 AND 19242-04 ONLY. TIGHTEN SCREWS AS SPECIFIED.

LAST SAVED IN SMARTTEAM: 12/04/2003 14:02

CRITICALITY SYMBOLS PER QPSP-001.2

LEVEL I LEVEL II LEVEL III

THIS DOCUMENT IS SOLELY THE PROPERTY OF PENTAIR WATER TREATMENT. REPRODUCTION, USE DISCLOSURE, OR TRANSMISSION OF THIS DOCUMENT OR DETAILS CONTAINED HEREIN, IN PART OR IN WHOLE, IS PROHIBITED WITHOUT THE WRITTEN CONSENT OF PENTAIR WATER TREATMENT ENGINEERING. THIS DOCUMENT AND ANY COPIES SHALL BE RETURNED TO PENTAIR WATER TREATMENT UPON WRITTEN REQUEST.

- DO NOT SCALE DRAWING
- DIMENSIONS = INCH(MM)
- TOLERANCES (UNLESS OTHERWISE SPECIFIED)

	INCH	(MM)
1	± 0.015	± 0.40
0.1	± 0.015	± 0.25
0.01	± 0.010	± 0.13
0.001	± 0.005	

ANGULAR ± 1°
BREAK ALL EXPOSED SHARP CORNERS .010 (2.5) X 45° MAX.

PARTS LIST			
THIS DRAWING MUST BE COMPARED TO THE ERP SYSTEM TO ENSURE CORRECT REVISION LEVEL PRIOR TO USE.			
THIRD ANGLE PROJECTION			
APPROVALS	DATE	P.O. BOX 730 BROOKFIELD, WI 53008-0730	
STW	12/02/2003	TITLE TANK ADAPTER ASSY, 8500	
CHECKED	DATE	SIZE C	DWG NO. 19242
NAME	DATE	SCALE 1:2	SOLIDWORKS FORMAT
APPROVED	DATE		SHEET 1 OF 1
NAME	DATE		