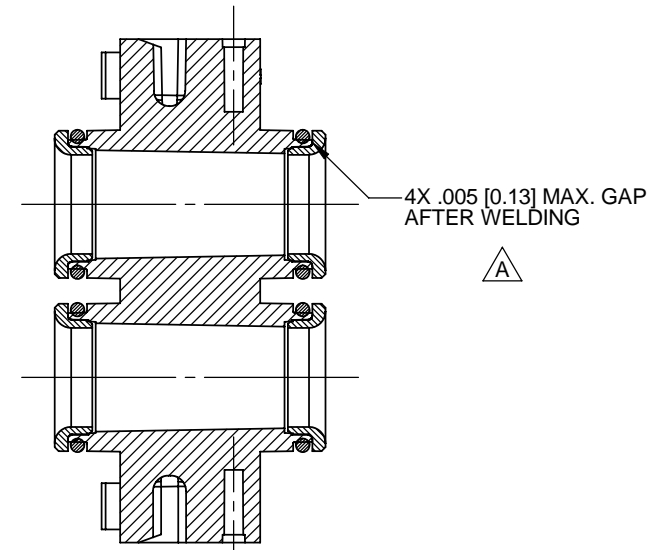
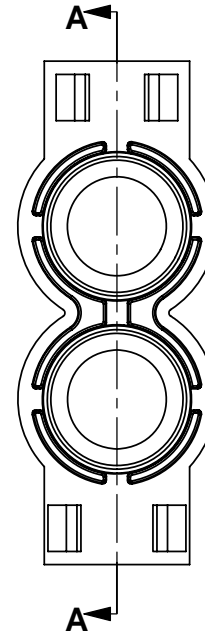
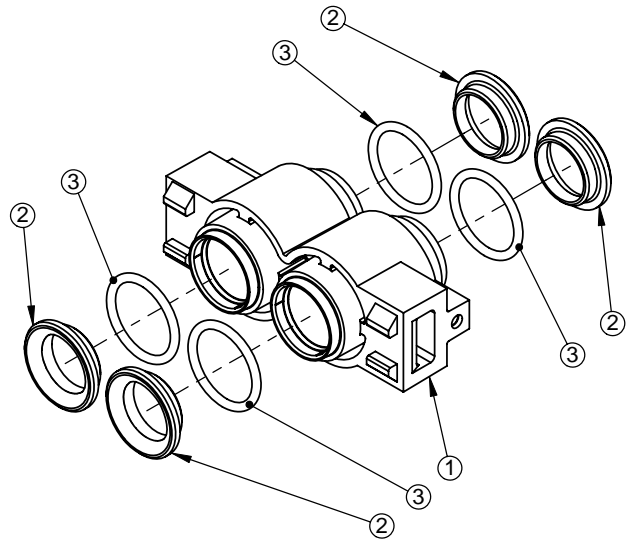


ITEM NO.	QTY.	PART NO.	DESCRIPTION
1	1	19496	SPACER, TANK
2	4	BR14666	COUPLING, ADAPTER, END RING
3	4	13305	O-RING, -199

REVISIONS					
ZONE	ECN	REV.	DESCRIPTION	DATE	APP'D
	10947	A	REDRAWN IN SOLIDWORKS; ADDED MAX GAP DIMENSION, ADDED ASSEMBLY AND PACKAGING INSTRUCTIONS	06/12/03	STM

OBSOLETE SEE ECO F5265



SECTION A-A

ASSEMBLY INSTRUCTIONS:
 1. WELD 4 END RINGS (ITEM 2) IN PLACE ON THE SPACER (ITEM 1).
 2. ASSEMBLE 4 O-RINGS (ITEM 3) INTO THE O-RING GROOVES.

PACKAGING/SHIPPING INSTRUCTIONS:
 1. NO INDIVIDUALLY PACKAGING REQUIRED.
 2. PLACE THE COMPLETED ASSEMBLIES IN A POLY-BAG LINED BOX.

LAST SAVED IN SMARTTEAM: 07/03/2003 14:28

CRITICALITY SYMBOLS PER QPSP-001.2

LEVEL I LEVEL II LEVEL III

THIS DOCUMENT IS SOLELY THE PROPERTY OF PENTAIR WATER TREATMENT. REPRODUCTION, USE DISCLOSURE, OR TRANSMISSION OF THIS DOCUMENT OR DETAILS CONTAINED HEREIN, IN PART OR IN WHOLE, IS PROHIBITED WITHOUT THE WRITTEN CONSENT OF PENTAIR WATER TREATMENT ENGINEERING. THIS DOCUMENT AND ANY COPIES SHALL BE RETURNED TO PENTAIR WATER TREATMENT UPON WRITTEN REQUEST.

DO NOT SCALE DRAWING. DIMS. ARE IN INCHES [mm]
 INTERPRET DIMS AND TOLERANCES PER ASME Y14.5M -1994
 UNLESS OTHERWISE SPECIFIED:
 CORNER FILLETS R.005-.020 [.127-.508]
 TOLERANCES:
 ANGLES ± .5°
 1 PLACE .X ± .015
 2 PLACE .XX ± .01
 3 PLACE .XXX ± .005

PARTS LIST

THIS DRAWING MUST BE COMPARED TO THE ERP SYSTEM TO ENSURE CORRECT REVISION LEVEL PRIOR TO USE.

THIRD ANGLE PROJECTION

P.O. BOX 730
BROOKFIELD, WI 53008-0730

APPROVALS DATE

DRAWN joe 12/14/2000

CHECKED NAME DATE

APPROVED NAME DATE

TITLE **SPACER ASSEMBLY**

SIZE **B** DWG NO. **19497** REV **A**

SCALE 1:1 SOLIDWORKS FORMAT SHEET 1 OF 1