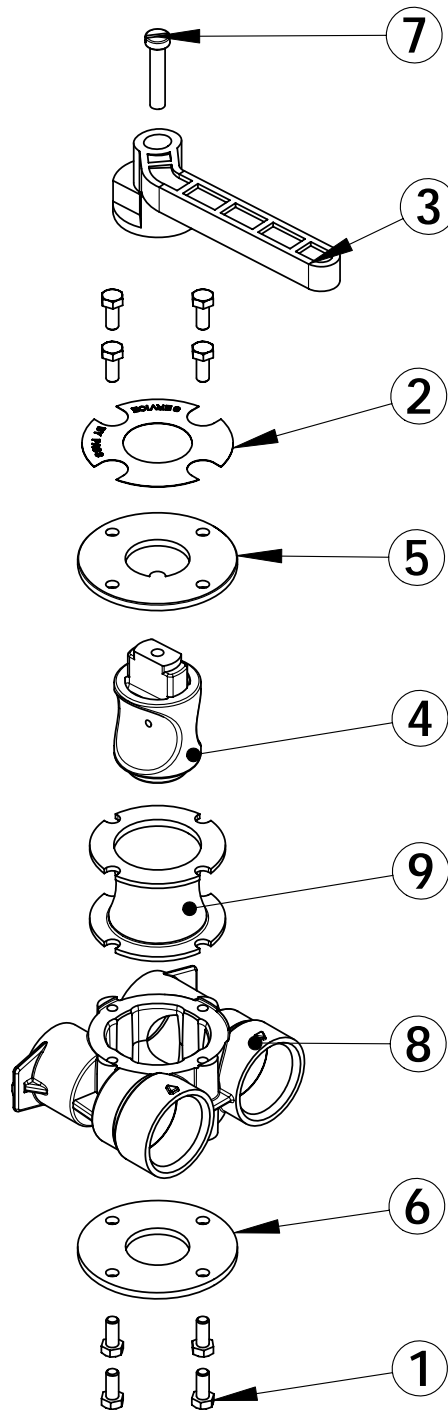


SEE BU28502

ITEM	QTY	PART NO.	DESCRIPTION	NOM
1	8	11737	SCREW	VIS
2	1	21134	LABEL BY-PASS	LABEL BY-PASS
3	1	24419-10	BY PASS HAND - RED	POIGNEE BY-PASS ROUGE
4	1	BU14105	BY-PASS SEAL 560CD	JOINT DE BY-PASS
5	1	BU11972	PLUG, BY PASS	BOUCHON BYPASS
6	1	BU11978	SIDE COVER BY PASS	PLAQUE
7	1	BU11986	SIDE COVER BY-PASS VALVE	COUVERCLE BY-PASS
8	1	BU28642	SCREW TC M6 x 30	VIS TC M6 x 30
9	1	BU13399-10	BY-PASS BODY, 1" BSP	CORPS BY-PASS 1" BSP



SEE BU28502

ITEM	QTY	PART NO.	DESCRIPTION	NOM
1	8	11737	SCREW	VIS
2	1	21134	LABEL BY-PASS	LABEL BY-PASS
3	1	24419-20	BY PASS HAND - BLUE	POIGNEE BY-PASS BLEUE
4	1	BU11972	PLUG, BY PASS	BOUCHON BYPASS
5	1	BU11978	SIDE COVER BY PASS	PLAQUE
6	1	BU11986	SIDE COVER BY-PASS VALVE	COUVERCLE BY-PASS
7	1	BU28642	SCREW TC M6 x 30	VIS TC M6 x 30
8	1	BU13399-10	BY-PASS BODY, 1" BSP	CORPS BY-PASS 1" BSP
9	1	BU14105	BY-PASS SEAL 560CD	JOINT DE BY-PASS