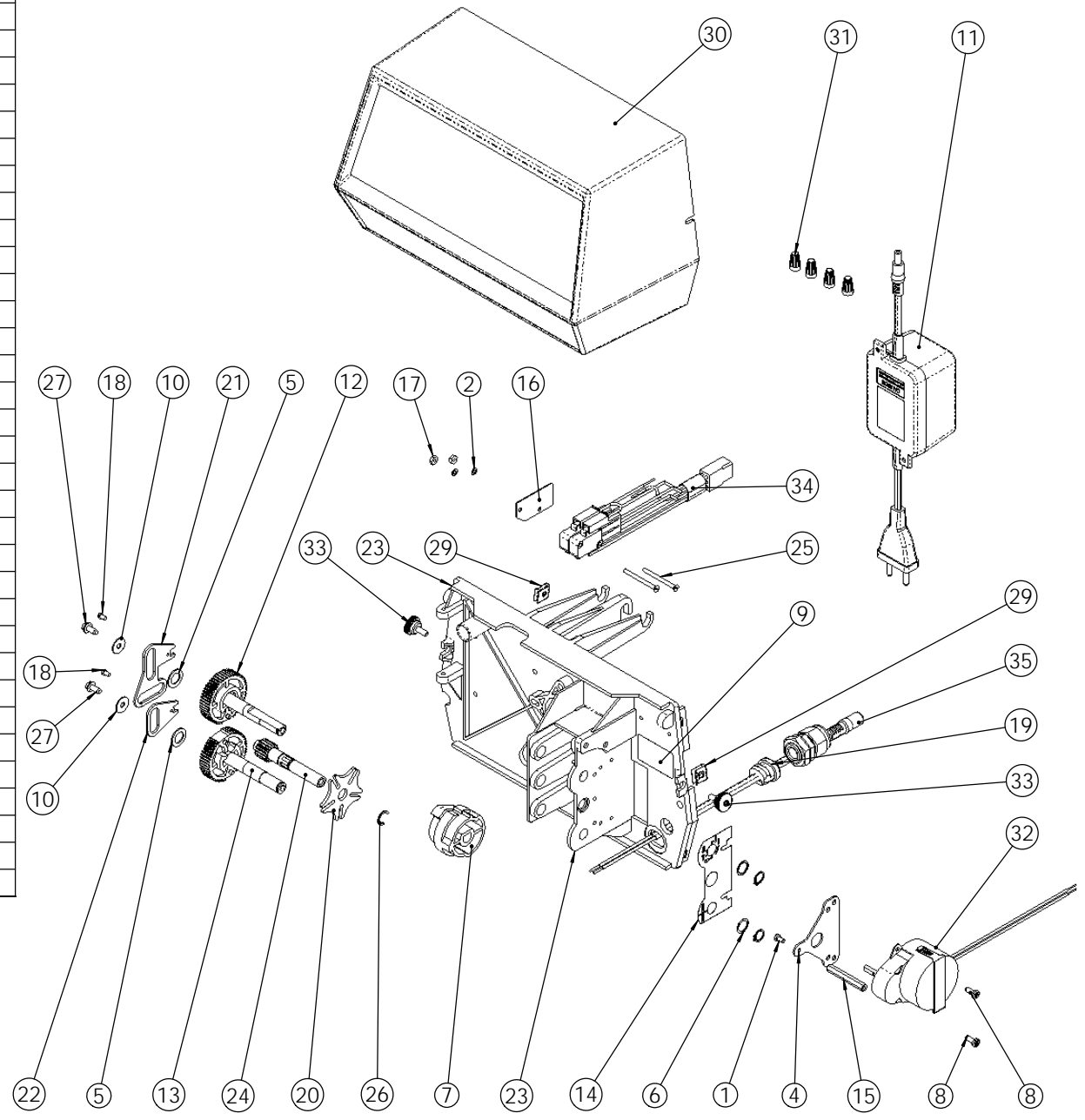


ITEM	QTY	PART NO.	DESCRIPTION	NOM
1	1	11358	SCREW,CYL, SLOTTED HEAD M3x6 mm	Vis à tête cylindrique fendue M3x6 mm
2	2	11663	LOCK WASHER	RONDELLE EVENTAILLE
3	2	14917	RETAINING CLIP	BAGUE DE RETENUE
4	1	15199	PLATE,GROUND,9000/9500	PLAQUE , 9000/9500
5	2	15372	THRUST WASHER	RONDELLE
6	2	15692	WASHER, PLAIN, 3/8"	RONDELLE
7	1	17331	CAM.9500	CAME 9500
8	2	19160	SCREW, #6-32 X 3/8 PAN HEAD	VIS
9	1	21271	SERIAL NUMBER LABEL	ETIQUETTE No DE SERIE
10	2	23250	WASHER INOX LN 4	RONDELLE
11	1	25651	24v, STANDARD TRANSFORMER	TRANSFORMATEUR STANDARD 24V
12	1	25868	DRIVE GEAR UP ASSY 9000	ROUE D'ENTRAINEMENT SUPERIEURE
13	1	25870	DRIVE GEAR LOWER ASSY	ROUE D'ENTRAINEMENT INFERIEURE
14	1	27002	SHAFT POSITION LABEL , 9000	ETIQUETTE
15	1	27712	HEXA. STAND OFF	ENTRETOISE HEXAGONALE
16	1	BR10302	INSULATOR, LIMIT SWITCH	ISOLATEUR
17	2	BR10339	NUT,HEX,4-40 ZINC PLATED	ECROU
18	2	BR11335	SCREW, FILLISTER HEAD, #4-40 X .19	VIS #4-40 X .19
19	1	BR13547	STRAIN RELIEF,FLAT CORD	PASSE CABLE
20	1	BR14896	WHEEL,GENEVA	ROUE
21	1	BR14921	LINK,PISTON ROD	LIEN, TIGE DE PISTON
22	1	BR15019	LINK,PISTON ROD,9000/9500	BIELLE, TIGE DE PISTON
23	1	br15131	BACK PLATE, 9000	PLAQUE DE MONTAGE 9000
24	1	BR15135	GEAR, DRIVE,9000	ROUE 9000
25	2	BR15172	SCREW, FLAT HEAD, #4-40 X 1.38	VIS
26	1	BR15810	RING, RETAINING	CLIP DE RETENUE
27	2	BR17798	SCREW, HEX WASHER HEAD, #8-16 X .38	VIS
28	1	BR17967	FITTING ASSY, LIQUID TIGHT , BLK	SERRE CABLE
29	2	BR18728	NUT, TINNEMAN, U TYPE, 8-32	
30	1	BR19291-060	COVER DESIGNER, BLACK	COUVERCLE NOIR
31	4	BR40422	WIRE NUT	CONNECTEUR
32	1	BR18737	DRIVE MOTOR - 24 V, 50-60 HZ	MOTEUR 24V 50/60Hz 1RPM
33	2	BU19367	SCREW,DESIGNER COVER,THUMB	VIS COUVERCLE
34	1	BU27746	9000 WIRE HARNESS DRIVE ASSY	FAISCEAU ASSEMBLE 9000
35	1	BU28552	TRANSFORMER WIRE HARNESS	FAISCEAU DU TRANSFORMATEUR



ENGINEER DRAWING ONLY



POWER HEAD ASSY 9000 without TIMER

24232
CHAP. 06