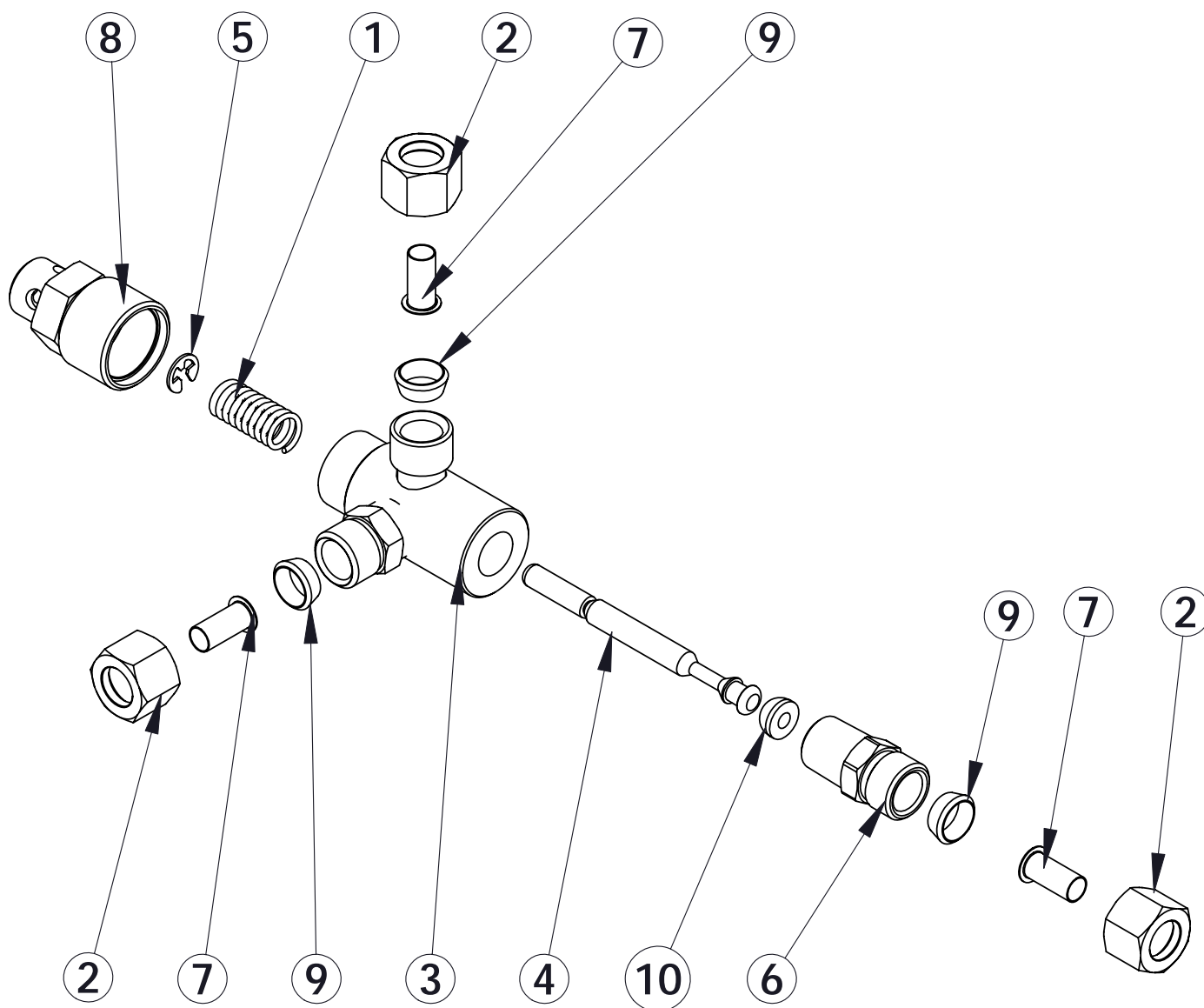


REVISIONS				
ECN	Rev.	Description	Date (dd/mm/yy)	Approved
	H	BR10550 WAS 10550	11/01/2008	LD
	J	BU12626-01 WAS 12626-01	07/02/2008	LD
	K	BR10332 WAS 10332	04/04/2008	LD
	L	BR11749 was 11749	14/04/2008	LD
F4738	M	BR10249 was 10249	05/05/2008	MP/LD



ITEM	QTY	PART NO.	DESCRIPTION	NOM
1	1	BR10249	SPRING, BRINE VALVE	RESSORT
2	3	10329	3/8" NUT	ECROU 3/8"
3	1	10785	SERVICE ACTUATOR ASSY	ACTIONNEUR ASSEMBLE
4	1	12552	BRINE VALVE STEM-1600	TIGE, VANNE A SAUMURE 1600
5	1	BR10250	RING, RETAINING	CLIP DE RETENUE
6	1	BR10331	FITTING, COMPRESSION, 1/4" X 3/8"	CONNECTEUR
7	3	BR10332	FITTING, INSERT, 3/8	INSERT 3/8
8	1	BR11749	GUIDE, BRINE VALVE STEM	ECROU VANNE A SAUMURE
9	3	BU10330	SLEEVE (3/8" TUBE)	OLIVE
10	1	BU12626-01	SEAT, BRINE VALVE	SIEGE VANNE A SAUMURE



SVO ASSY 2750/2850 SYSTEM

24268
Chap.XX