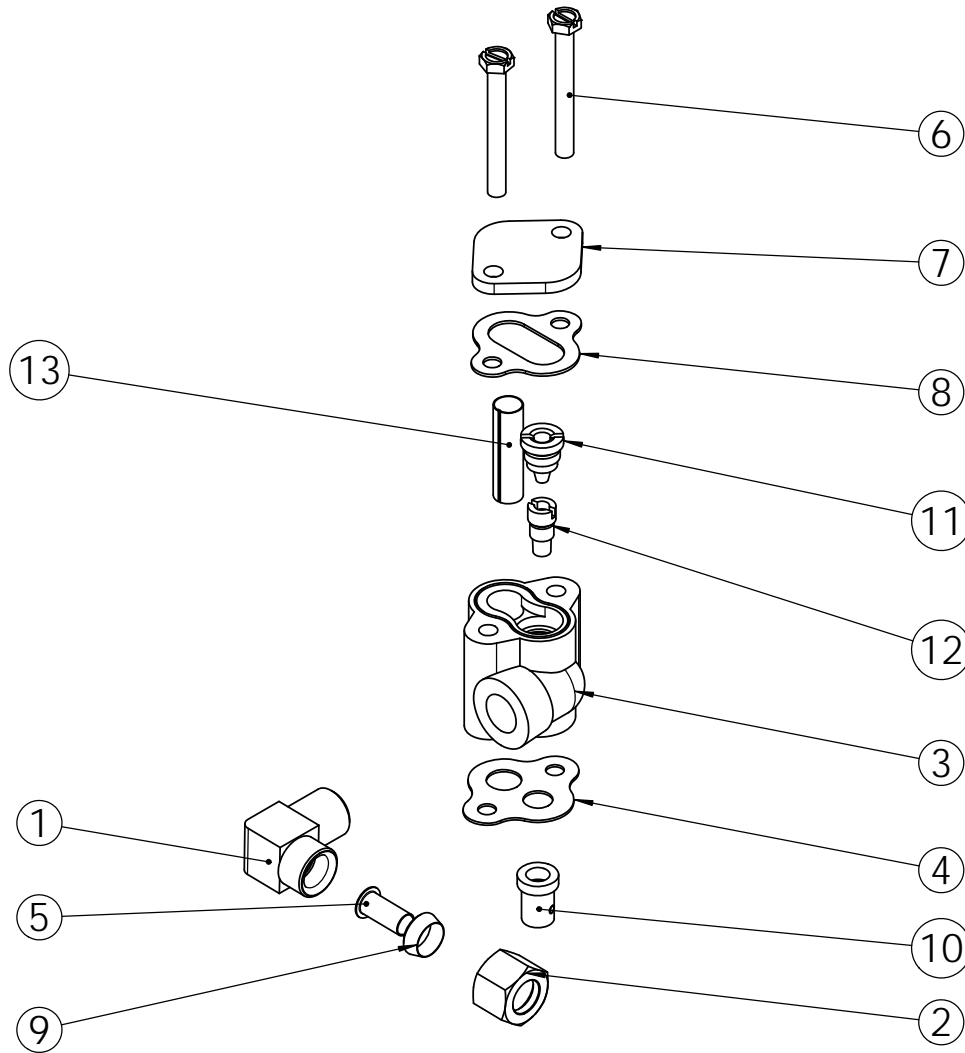


REVISIONS				
ECN	Rev.	Description	Date (dd/mm/yy)	Approved
	M	Added 16221	3/12/12	CHT



ITEM	PN	DESCRIPTION	24270-0	24270-1	24270-2	24270-3
1	10328	3/8" x 1/4" x 90° ELBOW	1	1	1	1
2	10329	3/8" NUT	1	1	1	1
3	17776	INJECTOR BODY 1600	1	1	1	1
4	23304	GASKET INJECTOR BODY	1	1	1	1
5	BR10332	FITTING,INSERT,3/8	1	1	1	1
6	BR10692	SCREW, SLOTTED, INDENTED HEX HEAD, #10 - 24 X 1 5/8	2	2	2	2
7	BR11893	INJECTOR COVER	1	1	1	1
8	BU10229	GASKET INJECTOR BODY	1	1	1	1
9	BU10330	SLEEVE (3/8" TUBE)	1	1	1	1
10	16221	AIR DISPENSER ASSY	1	1	1	1
11	BU10913-0	INJECTOR NOZZLE N° 0 - RED	1	-	-	-
11	BU10913-1	INJECTOR NOZZLE N° 1 - WHITE	-	1	-	-
11	BU10913-2	INJECTOR NOZZLE N° 2 - BLUE	-	-	1	-
11	BU10913-3	INJECTOR NOZZLE N° 3 - YELLOW	-	-	-	1
12	BU10914-0	# 0 INJECTOR THROAT, RED	1	-	-	-
12	BU10914-1	# 1 INJECTOR THROAT , NATURAL	-	1	-	-
12	BU10914-2	#2 INJECTOR THROAT , BLUE	-	-	1	-
12	BU10914-3	#3 INJECTOR THROAT , YELLOW	-	-	-	1
13	BR10227	SCREEN, INJECTOR	1	1	1	1



INJECTOR ASSY 1550/2800 (SPECIFY SIZE)

24270-XX
CHAP.13