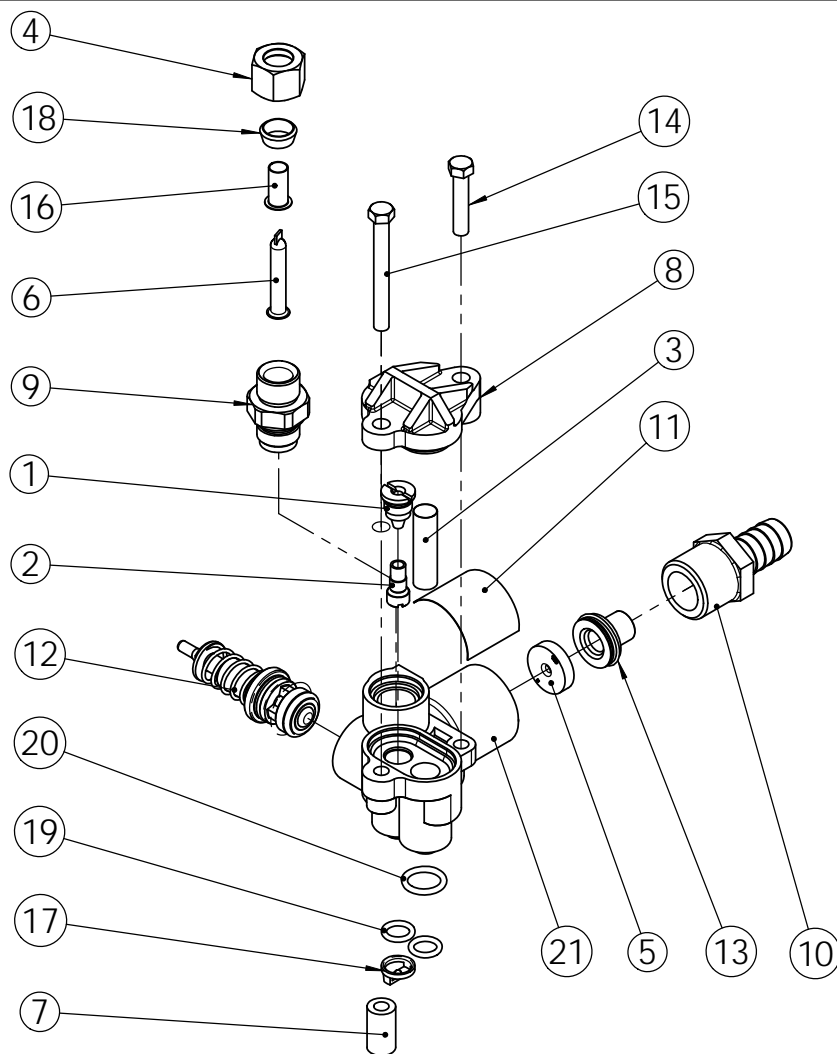


SEE VCINJ1

(Obsolete See ECO F5390)



RECOMMENDED SPECIFICATIONS / SPECIFICATIONS RECOMMANDEES

B.L.F.C. P/N ASSY	BLFC SIZE IN GPM	DLFC (GPM)								
		POSSIBLE SIZES / DEBITS POSSIBLES								
		0,8	1,2	1,5	2,0	2,4	3,0	3,5	4,0	5,0
18332-0,12	0,12		X	X						
18332-0,25	0,25		X	X	X	X				
18332-0,50	0,50				X	X	X	X		
18332-1	1,00						X	X	X	X

ITEM	QTY	PART NO.	DESCRIPTION	NOM
1	1	10225-1	INJECTOR NOZZLE INOX	BUSE INJECTEUR INOX
2	1	10226-1	THROAT, INJECTOR, DIA. .076	GORGE D'INJECTEUR
3	1	10227	INJECTOR SCREEN	FILTRE INJECTEUR
4	1	10329	3/8" NUT	ECROU 3/8"
5	1	BR12085	WASHER, FLOW, 1.2 GPM	RONDELLE 1.2GPM
6	1	12767	SCREEN, BRINE	FILTRE
7	1	13361	SPACER INJECTOR	ENTRETOISE
8	1	18060	INJECTOR COVER ASSY 5600	ENSEMBLE COUVERCLE D'INJECTEUR 5600
9	1	18332-0.25	BLFC 3/8" -0.25 GPM ASSY	BLFC 3/8" -0.25 GPM ASSEMBLE
10	1	22359	DRAIN HOSE BARB 1/2" - 1/2" BLACK	RACCORD A L'EGOUT 1/2" - 1/2" NOIR
11	1	26110	INJECTOR LABEL	ETIQUETTE INJECTEUR
12	1	24114	1600 BRINE VALVE ASSY 4600-5600	VANNE A SAUMURE 1600 pour 4600-5600
13	1	26207	DLFC RETAINER & O-RING ASSY	DLFC RETAINER ET O-RING
14	1	26483	SCREW H M5 x 25	VIS
15	1	26484	SCREW H M5 x 45	VIS
16	1	BR10332	FITTING, INSERT, 3/8	INSERT 3/8
17	1	BR13497	DISPERSER, AIR, 5600	DEFLECTEUR D'AIR
18	1	BU10330	SLEEVE (3/8" TUBE)	OLIVE
19	2	BU13301-01	O-RING 7,64x1,78	JOINT TORIQUE 7,64x1,78
20	1	BU21741	O-RING	JOINT TORIQUE 2 x 11
21	1	BU28408	INJECTOR AND DRAIN HOUSING	CORPS D'INJECTEUR