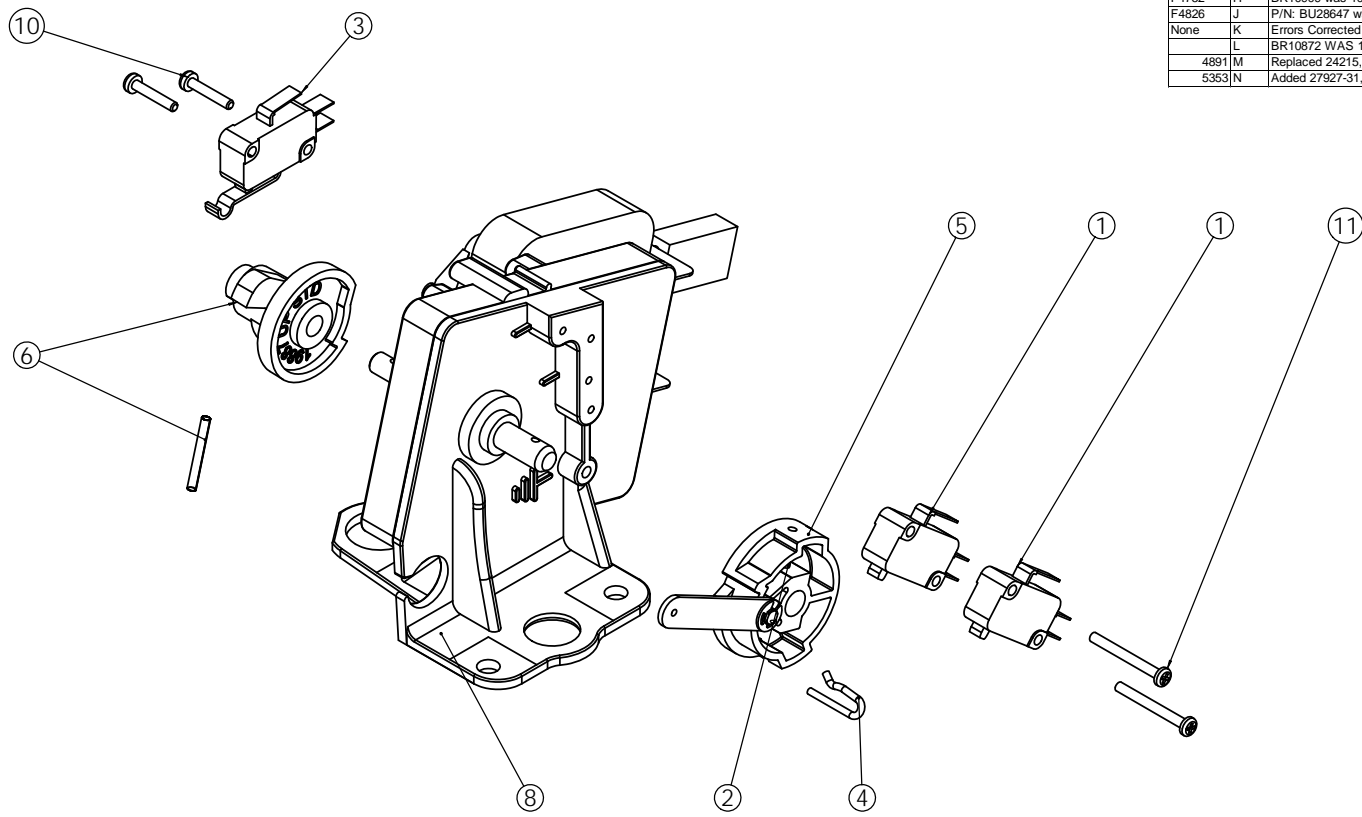


REVISIONS					
ECN	Rev.	Description	Date (dd/mm/yy)	Approved	
F4695	G	Redrawn : Suppress Insulators * BR41544 / BR41543 New Motors for 24v and 115 Volts ** Versions -03 / -13 / - 23 keep the 40386 Motor **	14/03/08	MP/LD	
F4752	H	BR10909 was 10909	20/05/2008	MP/LD	
F4826	J	P/N: BU28647 was 28389	02/09/2008	MP/LD	
None	K	Errors Corrected about Voltage Versions ( See Chart )	10/08/2008	MP/LD	
	L	BR10872 WAS 10872	11/12/2008	LD	
	M	Replaced 24215, 24265, 40386, 11826-02 by BR41545	18/12/2008	LD	
	N	Added 27927-31, -32, -33	03/05/2011	CHT	



**24 Volts Versions:**  
27927-01 / 27927-11

**115 Volts Versions :**  
27927-02 / 27927-12

**230 Volts versions**  
27927-03 / 27927-13

ITEM	PN	DESCRIPTION	2750 With SWITCH UP FLOW Valves			2750 Without Switch UP FLOW Valves			2910 With SWITCH UP FLOW Valves		
			27927-01 QTY	27927-02 QTY	27927-03 QTY	27927-11 QTY	27927-12 QTY	27927-13 QTY	27927-31 QTY	27927-32 QTY	27927-33 QTY
1	10218	MICROSWITCH	2	2	2	2	2	2	2	2	
2	BR10338	PIN, ROLL, 2900/3900	1	1	1	1	1	1	1	1	
3	10896	MICROSWITCH	1	1	1	-	-	-	1	1	
4	BR10909	PIN, CONNECTING ROD SPRING	1	1	1	1	1	1	1	1	
5	Bu27131	DRIVE CAM STF ASSY UF 2750/2900	1	1	1	1	1	1	-	-	
5	BU27131-01	DRIVE CAM STF ASSY UF 2750/2900	-	-	-	-	-	-	1	1	
6	BU28647	KIT CAM UP FLOW & ROLL PIN FOR 2510/2750/2850/2870/2910	1	1	1	1	1	1	1	1	
7	BR41543	MOTOR, DRIVE, 115V, 60 Hz	-	1	-	-	1	-	1	-	
8	BR41544	MOTOR, DRIVE, 24V/ 50-60 HZ	1	-	-	1	-	1	-	-	
9	BR41545	MOTOR, DRIVE, 230V/ 50-60 HZ	-	-	1	-	-	1	-	1	
10	BR11805	SCREW TC N*4-40 UNC 2A	2	2	2	-	-	2	2	2	
11	BR14923	SCREW,PAN HD MACH,4-40 X 1	2	2	2	2	2	2	2	2	

ROHS NOTES :  
THE COMPONENT, PART, OR ASSEMBLY DESCRIBED IN THIS DOCUMENT MUST COMPLY WITH THE FOLLOWING EU (EUROPEAN UNION) DIRECTIVES:  
ROHS DIRECTIVE 2002/95/EC, WEE DIRECTIVE 2002/96/EC, AND ELV DIRECTIVE 2000/53/EC.  
THESE DIRECTIVES RESTRICT THE USE OF LEAD, CADMIUM, MERCURY, CHROMIUM, PBB, PBDE, AND OTHER HAZARDOUS MATERIALS.  
SEE THE TERMS AND CONDITIONS OF THE CONTRACT (PURCHASE ORDER) FOR MORE INFORMATION.

THRD ANGLE PROJECTION 	DENOTES CRITICAL DIMENSION DENOTES REVISION		Pentair Water France 140, Av Rolland Garros 78532 Buc cedex France	
			Title DRIVE MOTOR ASSY XX VOLTS UP FLOW (FILTER Option) (Specify voltage)	
Material N/A	Date 08/06/2011 13/03/2008	Scale 1:1	Figures 27927-XX	Weight (kg) X
Drawn MAN	Date 08/06/2011 13/03/2008	Size A2	Part # 27927-XX	Sheet 1 of 1

TOLERANCES (unless otherwise specified):  
 25.0 ±0.1mm  
 25.0 ±0.05mm  
 ANGULAR ±1°  
 Break all exposed sharp corners  
 ±0.25 R0.5mm

DO NOT SCALE DRAWING  
 DIMENSIONS = MM (inch)

Approved LD

All drawings are the sole property of Pentair Water France. They may not be reproduced in any form without the written permission of Pentair Water France.