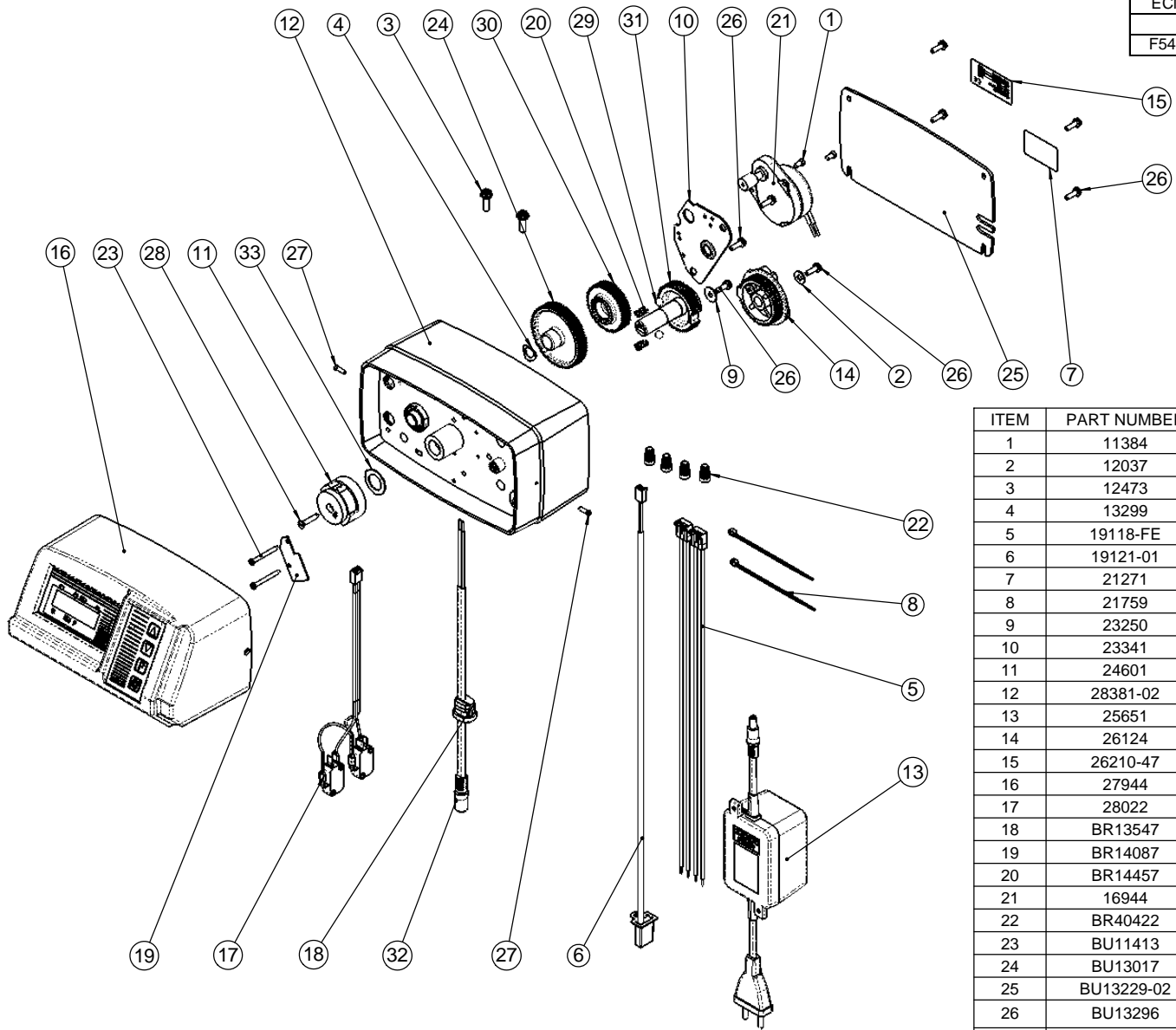


REVISIONS				
ECN	Rev.	Description	Date (dd/mm/yy)	Approved
	R	BR42933-10 was BU24958	7/07/11	MAN
F5412	T	OBSOLETE	26/10/2011	MAN



ITEM	PART NUMBER	QTY	DESCRIPTION
1	11384	2	SCREW
2	12037	1	WASHER
3	12473	2	SCREW 10-24 X 5/8
4	13299	1	WASHER
5	19118-FE	1	POWER WIRE HARNESS
6	19121-01	1	METER CABLE ASSY (EUROPE)
7	21271	1	SERIAL NUMBER LABEL
8	21759	2	TIE RAP
9	23250	1	WASHER INOX LN 4
10	23341	1	PLATE MOTOR MOUNTING
11	24601	1	CAM, UP FLOW BRINE FIRST
12	28381-02	1	DRIVE HOUSING 5600 SE ASSY
13	25651	1	24v, STANDARD TRANSFORMER
14	26124	1	BRINE CAM UF ASSY DVGW
15	26210-47	1	CE LABEL for 4700-5700-6600-6700/ 24v-50Hz /5w/IP22
16	27944	1	COVER & MICRO-P BOARD 24v SYS ASSY 6600/6665
17	28022	1	WIRE HARNESS HOME & STEP & MICROSWITCH FOR 6600 UF
18	BR13547	1	STRAIN RELIEF,FLAT CORD
19	BR14087	1	INSULATOR
20	BR14457	2	SPRING,DETENT
21	16944	1	MOTOR, 24V - 60Hz, 2 RPM
22	BR40422	4	WIRE NUT
23	BU11413	2	SCREW 2.9x32
24	BU13017	1	IDLER GEAR
25	BU13229-02	1	BACK COVER - Black
26	BU13296	8	SCREW #6-20 * 0.50 long
27	BU13898	2	SCREW 4-24
28	BU15151	1	SCREW
29	BU13300	2	BALL 1/4"
30	BU23045	1	DRIVE GEAR
31	BR42933-10	1	GEAR, DRIVE, UPFLOW, 6700
32	BU28552	1	TRANSFORMER WIRE HARNESS
33	BR19079	1	WASHER, FRICTION

**OBSOLETE
SEE ECO F5412**



Retrofit Kit for old 6600 UF 230V

28024