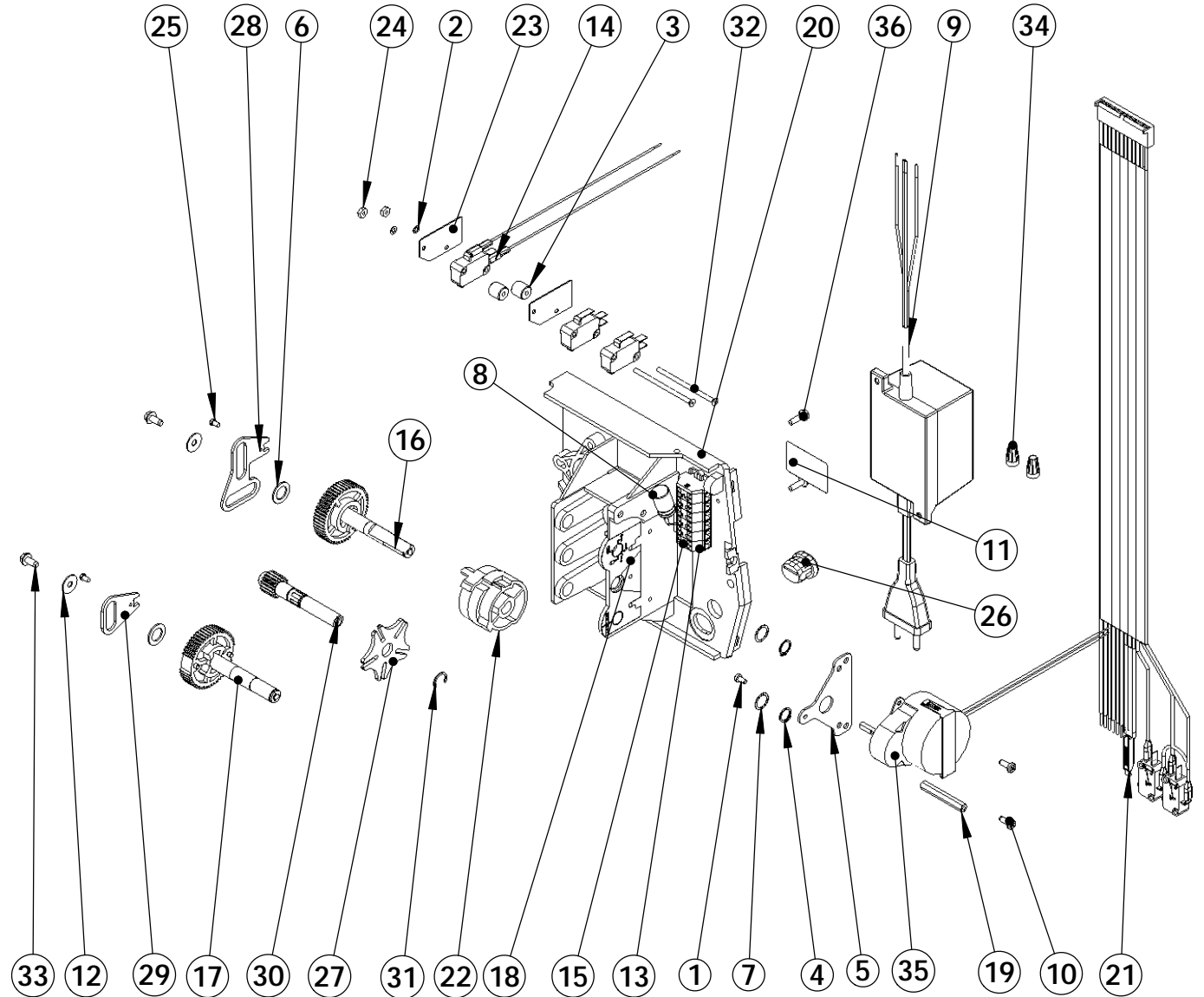


ITEM	QTY	PART NO	DESCRIPTION	NOM
1	1	11358	SCREW,CYL. SLOTTED HEAD M3x6 mm	Vis à tête cylindrique fendue M3x6 mm
2	2	11663	LOCK WASHER	RONDELLE EVENTAILLE
3	2	11882	SWITCH STAND OFF	ENTRETOISE
4	2	14917	RETAINING CLIP	BAGUE DE RETENUE
5	1	15199	PLATE,GROUND,9000/9500	PLAQUE , 9000/9500
6	2	15372	THRUST WASHER	RONDELLE
7	2	15692	WASHER, PLAIN, 3/8"	RONDELLE
8	1	17592	CAPACITOR	CONDENSATEUR
9	1	18355	TRANSFORMER 230v-24v 50/60Hz	TRANSFORMATEUR 230v-24v 50/60Hz
10	2	19160	SCREW, #6-32 X 3/8, PAN HEAD	VIS
11	1	21271	SERIAL NUMBER LABEL	ETIQUETTE No DE SERIE
12	2	23250	WASHER INOX LN 4	RONDELLE
13	1	23653-06	TERMINAL BLOCK 06 POSITIONS	BORNES 06 POSITIONS
14	1	23950-10	CHLORINATOR MICROSWITCH ASSY	MICROSWITCH CHLORINATEUR ASSEMBLE
15	1	24934	TERMINAL STRIP LABEL	ETIQUETTE BORNIER
16	1	25868	DRIVE GEAR UP ASSY 9000	ROUE D'ENTRAINEMENT SUPERIEURE
17	1	25870	DRIVE GEAR LOWER ASSY	ROUE D'ENTRAINEMENT INFERIEURE
18	1	BU28780	Shaft Position Label, Up Flow, 9000	Shaft Position Label, Up Flow, 9000
19	1	27712	HEXA. STAND OFF	ENTRETOISE HEXAGONALE
20	1	28207	BACK PLATE 9120	PLAQUE DE MONTAGE 9120
21	1	28330-00	HARNISS, 9120	FAISCEAU 9120
22	1	28395	TRIPLE CAM ASSY 9125	TRIPLE CAME ASSEMBLEE 9125
23	2	BR10302	INSULATOR, LIMIT SWITCH	ISOLATEUR
24	2	BR10339	NUT,HEX 4-40 ZINC PLATED	ECROU
25	2	BR11335	SCREW, FILLISTER HEAD, #4-40 X .19	VIS #4-40 X .19
26	1	BR13547	STRAIN RELIEF,FLAT CORD	PASSE CABLE
27	1	BR14896	WHEEL, GENEVA	ROUE
28	1	BR14921	LINK PISTON ROD	LIEN, TIGE DE PISTON
29	1	BR15019	LINK PISTON ROD 9000/9500	BIELLE, TIGE DE PISTON
30	1	BR15135	GEAR, DRIVE 9000	ROUE 9000
31	1	BR15810	RING, RETAINING	CLIP DE RETENUE
32	2	BR16442	SCREW, AUX. SWITCH	VIS TETE FRAISEE, 4-40
33	2	BR17798	SCREW, HEX WASHER HEAD, #8-16 X .38	VIS
34	2	BU28777	Wire Nut Tan	Connecteur
35	1	BR18737	DRIVE MOTOR - 24 V, 50-60 HZ	MOTEUR 24V 50/60Hz 1RPM
36	2	BU13296	SCREW #6-20 * 0.50 long	Vis

NOTE : ITEM # 9 (P/N17592):
- DOIT ETRE CONNECTE DU COTE GAUCHE
- MUST BE PLUGGED LEFT SIDE



INTERNAL USE ONLY



POWER HEAD 9125 SE UF

28363
CHAP. 6