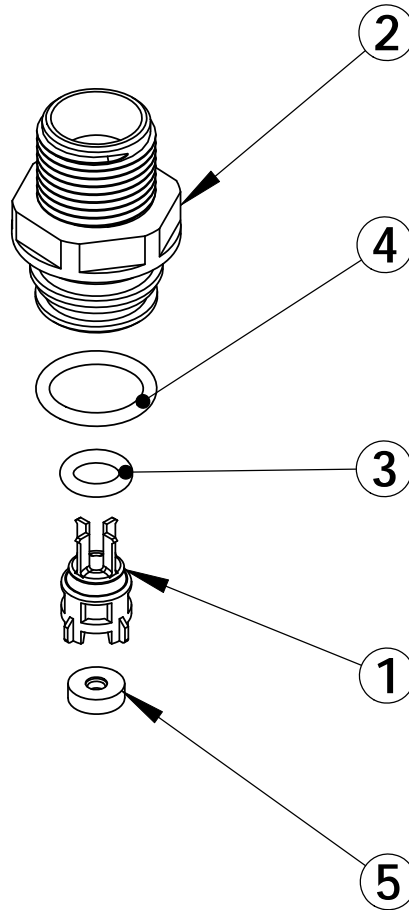


REVISIONS				
ECN	Rev.	Description	Date (dd/mm/yy)	Approved
	E	BR12097, BR12095 & BR12094 WAS 12097, 12095 & 12094	6/04/09	LD
	F	BR19355 WAS 19355	12/06/09	LD
5014	G	BR17307 was 17307	25/06/09	LD



ITEM	PN	DESCRIPTION	28387-0.12 QTY	28387-0.25 QTY	28387-0.50 QTY	28387-1 QTY
1	BR19334	BLFC SHUTTLE	1	1	1	1
2	BR19335	FITTING, BLFC, 3/8"	1	1	1	1
3	BU10141	O'RING 6,07 x 1,78	1	1	1	1
4	BU13302-01	O'RING 12,42x1,78	1	1	1	1
5	BR17307	WASHER, FLOW CONTROL, .50 GPM	1	-	-	-
5	BR12094	WASHER, FLOW CONTROL, .25GPM	-	1	-	-
5	BR12095	WASHER, FLOW CONTROL, .50 GPM	-	-	1	-
5	BR12097	WASHER, FLOW CONTROL, 1.0 GPM	-	-	-	1



BLFC assy 3/8in 1600 7700 (Specify Size)

28387-XX