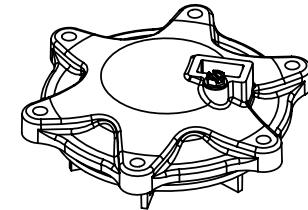
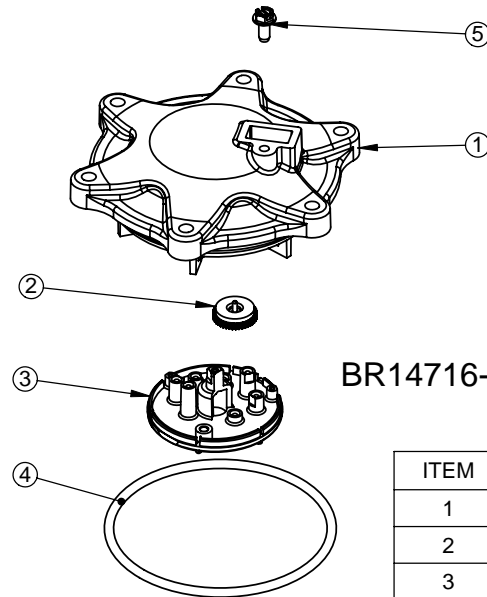
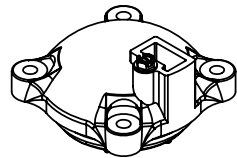
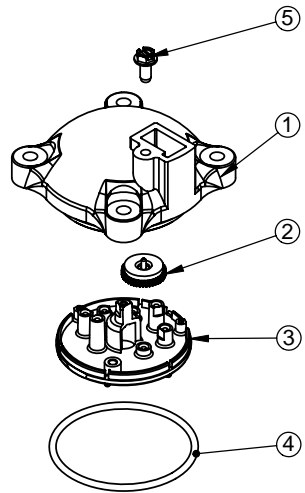


ITEM	P/N	DESCRIPTION	QTY
1	BR13874	CAP, METER, ELECTRONIC	1
2	14715	GEAR, MAGNET	1
3	BR41055	PLATE, INTERMEDIATE	1
4	BR13847	O-RING, -137	1
5	BR17798	SCREW, HEX WASHER HEAD, #8-16 X .38	1

REVISIONS					
ZONE	ECN	REV.	DESCRIPTION	DATE	APP'D
	4237	1	MADE DRAWING	10-9-92	AJH
	11921	B	REDRAWN ON SOLIDWORKS, ADDED NO 14716-01 AND ASSY INSTRUCTIONS	2-13-04	AB
	16687	C	REVISED PER MARKED UP DRAWINGS	1-25-07	AB

BR14716, METER CAP ASSY, 3/4 to 2", ELEC, PLAS, PDL



BR14716-01, METER CAP ASSY, 3", ELEC, PLAS, PDL

ITEM	P/N	DESCRIPTION	QTY
1	BR19074	CAP, METER, 3" PLASTIC	1
2	14715	GEAR, MAGNET	1
3	BR41055	PLATE, INTERMEDIATE	1
4	15707	O-RING, -236	1
5	BR17798	SCREW, HEX WASHER HEAD, #8-16 X .38	1

ASSEMBLE AND GLUE PER DRAWING 42332WI

LAST SAVED IN SMARTTEAM: 04/28/2007 07:56

CRITICALITY SYMBOLS PER QPSP-001.2
 LEVEL I LEVEL II LEVEL III

THIS DOCUMENT IS SOLELY THE PROPERTY OF PENTAIR WATER TREATMENT. REPRODUCTION, USE DISCLOSURE, OR TRANSMISSION OF THIS DOCUMENT OR DETAILS CONTAINED HEREIN, IN PART OR IN WHOLE, IS PROHIBITED WITHOUT THE WRITTEN CONSENT OF PENTAIR WATER TREATMENT ENGINEERING. THIS DOCUMENT AND ANY COPIES SHALL BE RETURNED TO PENTAIR WATER TREATMENT UPON WRITTEN REQUEST.

DO NOT SCALE DRAWING. DIMS. ARE IN INCHES [mm]
 INTERPRET DIMS AND TOLERANCES PER ASME Y14.5M-1994 UNLESS OTHERWISE SPECIFIED:
 CORNER FILLETS R.005-.020 [127-508]
 TOLERANCES:
 ANGLES: ± 1°
 1 PLACE .X: ± .015 [0.38]
 2 PLACE .XX: ± .01 [0.3]
 3 PLACE .XXX: ± .005 [0.13]

THE COMPONENT, PART, OR ASSEMBLY DESCRIBED IN THIS DOCUMENT MUST COMPLY WITH THE FOLLOWING EU (EUROPEAN UNION) DIRECTIVES: RoHS DIRECTIVE 2002/95/EC, WEEE DIRECTIVE 2002/96/EC, AND ELV DIRECTIVE 2000/53/EC. THESE DIRECTIVES RESTRICT THE USE OF LEAD, CADMIUM, MERCURY, CHROMIUM, PBB, PBDE, AND OTHER HAZARDOUS MATERIALS. SEE THE TERMS AND CONDITIONS OF THE CONTRACT (PURCHASE ORDER) FOR MORE INFORMATION.

THIS DRAWING MUST BE COMPARED TO THE ERP SYSTEM TO ENSURE CORRECT REVISION LEVEL PRIOR TO USE.

THIRD ANGLE PROJECTION

APPROVALS DATE

DRAWN rsm 01/22/2004

CHECKED NAME DATE

APPROVED NAME DATE

Pentair Water Brookfield
 P.O. BOX 730
 BROOKFIELD, WI 53008-0730

TITLE
METER CAP ASSY, ELEC, PLAS, PDL

SIZE **B** DWG NO. **BR14716** REV **C**

SCALE 1:2 SOLIDWORKS FORMAT SHEET 1 OF 1