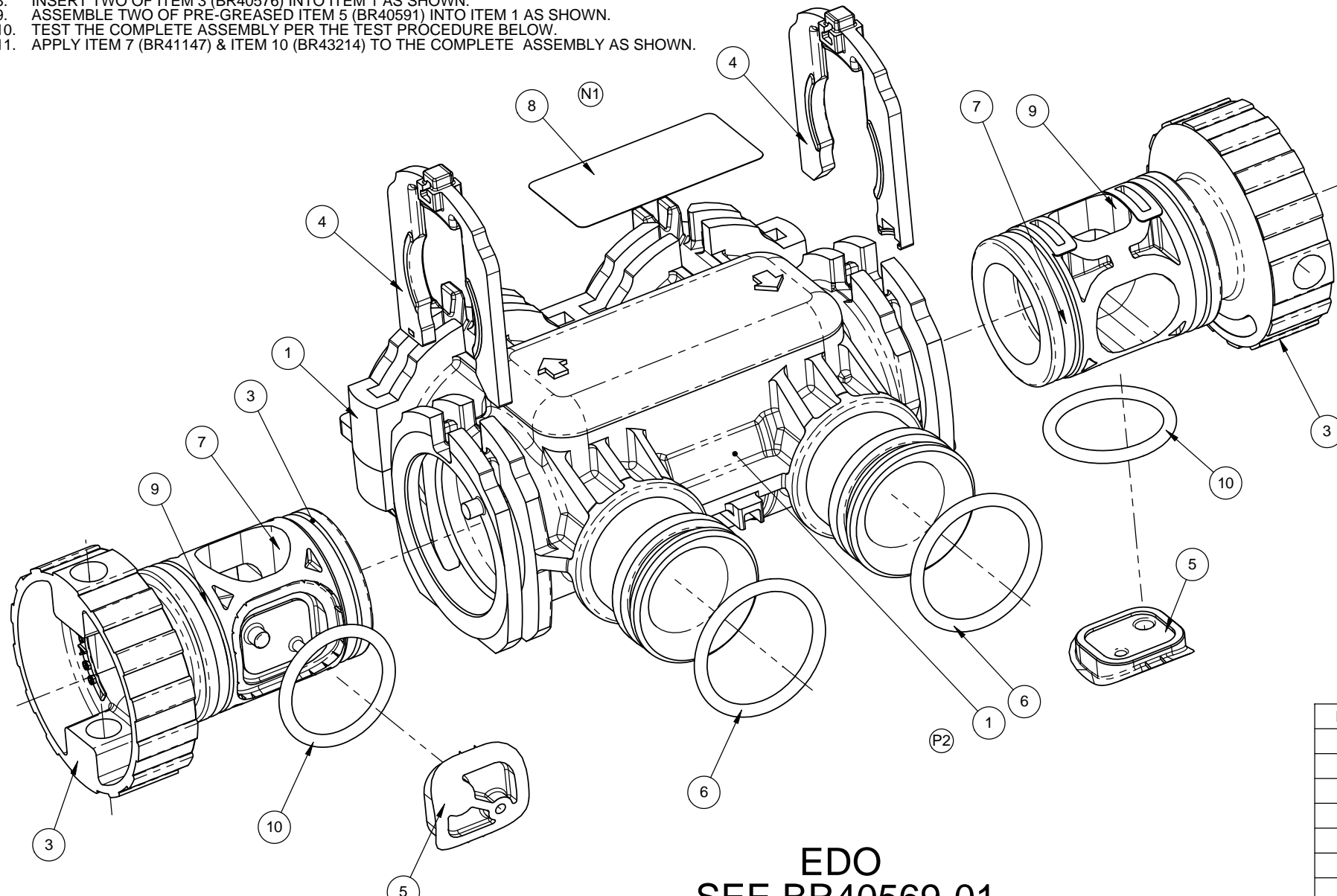


ASSEMBLY PROCEDURE:

- (L1) 1. APPLY DC200 SILICONE GREASE (BR41451) UNIFORMLY TO THE MAIN BORE OF ITEM 1 (BR40954) WITH A FOAM BRUSH. DO NOT OVER GREASE.
- (H1) 2. GREASE ITEM 5 (BR40951), ITEM 6 (BR17243-01), ITEM 8 (BR41146) AND ITEM 9 (BR41211) WITH DC111 SILICONE GREASE (BR41163).
- (H2) 3. ASSEMBLE ONE OF PRE-GREASED ITEM 8 (BR41146) TO ITEM 2 (BR40571) AS SHOWN USING F1833-1 MANDREL TO PREVENT ROLLING OF O-RING.
- (G1) 4. ASSEMBLE ONE OF PRE-GREASED ITEM 6 (BR17243-01) TO ITEM 2 AS SHOWN USING F1833-2 MANDREL TO PREVENT ROLLING OF O-RING.
- 5. ASSEMBLE ONE OF PRE-GREASED ITEM 9 (BR41211) TO ITEM 2, THEN PLACE ONE OF ITEM 4 (BR40955) ON ITEM 2 AS SHOWN AND SEAT ITEM 9 IN THE O-RING GROOVE.
- 6. INSERT THE ASSEMBLED ITEM 2 INTO THE MAIN BORE OF ITEM 1 AND ROTATE BACK AND FORTH TO SEAT THE O-RINGS.
- 7. REPEAT STEP 3 THROUGH 6 FOR THE SECOND ITEM 2.
- 8. INSERT TWO OF ITEM 3 (BR40576) INTO ITEM 1 AS SHOWN.
- 9. ASSEMBLE TWO OF PRE-GREASED ITEM 5 (BR40591) INTO ITEM 1 AS SHOWN.
- (P3) 10. TEST THE COMPLETE ASSEMBLY PER THE TEST PROCEDURE BELOW.
- 11. APPLY ITEM 7 (BR41147) & ITEM 10 (BR43214) TO THE COMPLETE ASSEMBLY AS SHOWN.



EDO
SEE BR40569-01
(See ECO F5269)

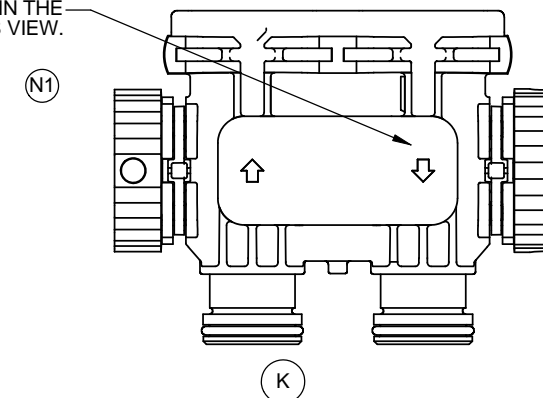
TEST PROCEDURE:
TEST FIXTURE F1677

- (J1) 1. BYPASS ASSEMBLIES ARE SET IN BYPASS MODE.
- 2. PLACE VALVES UPSIDE DOWN ONTO SEALING PLUGS OF TESTER [VENT SLOT UP].
- 3. PRESSURIZE BYPASS BY PRESSING PALM BUTTON #1 AND #3 SIMULTANEOUSLY. HOLD UNTIL FIXTURE DROPS AND BYPASS VALVES ARE PRESSURIZED. GREEN LIGHT WILL LIGHT WHEN THIS STEP IS COMPLETED.
- NOTE: IF BYPASS ASSEMBLY LEAKS EXCESSIVELY, THE GREEN LAMP WILL NOT LIGHT AND THE FIXTURE WILL AUTOMATICALLY RAISE. CHECK ASSEMBLIES AND RETEST.
- (J2) 4. 5 SECONDS OF STABILIZE TIME IS REQUIRED TO ENSURE PRESSURIZATION.
- 5. OBSERVE EACH BYPASS FOR A MINIMUM OF 30 SECONDS FOR ANY SIGN OF BUBBLES ESCAPING.
- 6. RAISE THE BYPASS AND UNCLAMP BY PRESSING BUTTON #1 AND #2 SIMULTANEOUSLY AND HOLD UNTIL FIXTURE RAISES AND CLAMPS RELEASE.
- 7. REMOVE PARTS FROM FIXTURE.
- (L2) 8. ALL NONCONFORMING PRODUCT MUST BE SEGREGATED.
- 9. INLET AIR PRESSURE OF 40 PSI \pm 2 PSI IS REQUIRED FOR THIS TEST.

REVISIONS

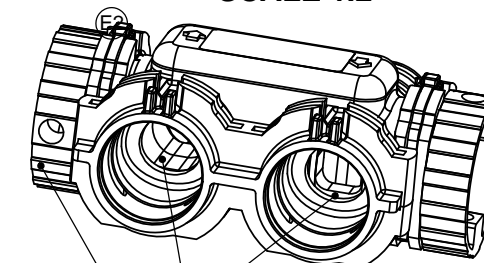
ZONE	ECN	REV.	DESCRIPTION	DATE	APP'D
	15601	K	REMOVED NOTE 'OUTLET SIDE ARROW SHOULD BE MARKED WITH BLUE INK TO INDICATE THE WELDMENT HAS BEEN PRESSURE DECAY TESTED'	03-10-06	TLE
	19193	L	1- REWROTE ASSEMBLY PROCEDURES. 2- ADD'D: NOTE-9 IN TEST PROCEDURES. 3- UPDATED TITLEBLOCK TO RCHS VERSION	06-03-08	TLE
	20276	M	1-ADD'D: PAGE-2 (ASSEMBLY BOARD)	3-11-09	SN
	20681	N	1-UPDATED LABEL PICTURE. (3-PLACES) TO SHOW ORIENTATION ONLY. NOT A FULL DETAIL OF LABEL	7-20-09	TLE
	32012	P	1-ADD'D: BR43214. 2-ADD'D: BALLOON #10. 3-WAS: NOTE-11. APPLY ITEM 7 (BR41147) TO THE COMPLETE ASSEMBLY AS SHOWN. 4-ADD'D: LABEL TO SECOND PAGE.	26JAN11	TJM

APPLY LABEL WITH ASSEMBLY FIXTURE F1709. LABEL MUST BE APPLIED IN THE ORIENTATION AS SHOWN IN THIS VIEW.



TOP VIEW OF BYPASS WITH LABEL
SCALE 1:2

ISOMETRIC VIEW OF BYPASS
BODY COLLAPSED
SCALE 1:2



NO GREASE ALLOWED ON BYPASS HANDLES

NO EXCESS GREASE ALLOWED IN BYPASS PORTS

ITEM	P/N	DESCRIPTION	QTE
1	BR40570	BODY, BYPASS, HF35	1
2	BR40956	COVER, BYPASS, HF35	1
3	BR40571	PLUG, BYPASS, HF35	2
4	BR40576	CLIP, H, PLASTIC, 7000	2
5	BR40955	RETAINER, SEAL, 7000 BYPASS	2
6	40951	O-RING, -220	2
7	17243-01	O-RING, -221, 560CD	2
8	BR41147	LABEL, BYPASS, 7000	1
9	BR41146	O-RING, -222	2
10	41211	O-RING, -217	2

LAST SAVED IN SMARTTEAM2/9/2011 9:15:49 AM

CRITICALITY SYMBOLS PER QPSP-001.2

LEVEL I LEVEL II LEVEL III

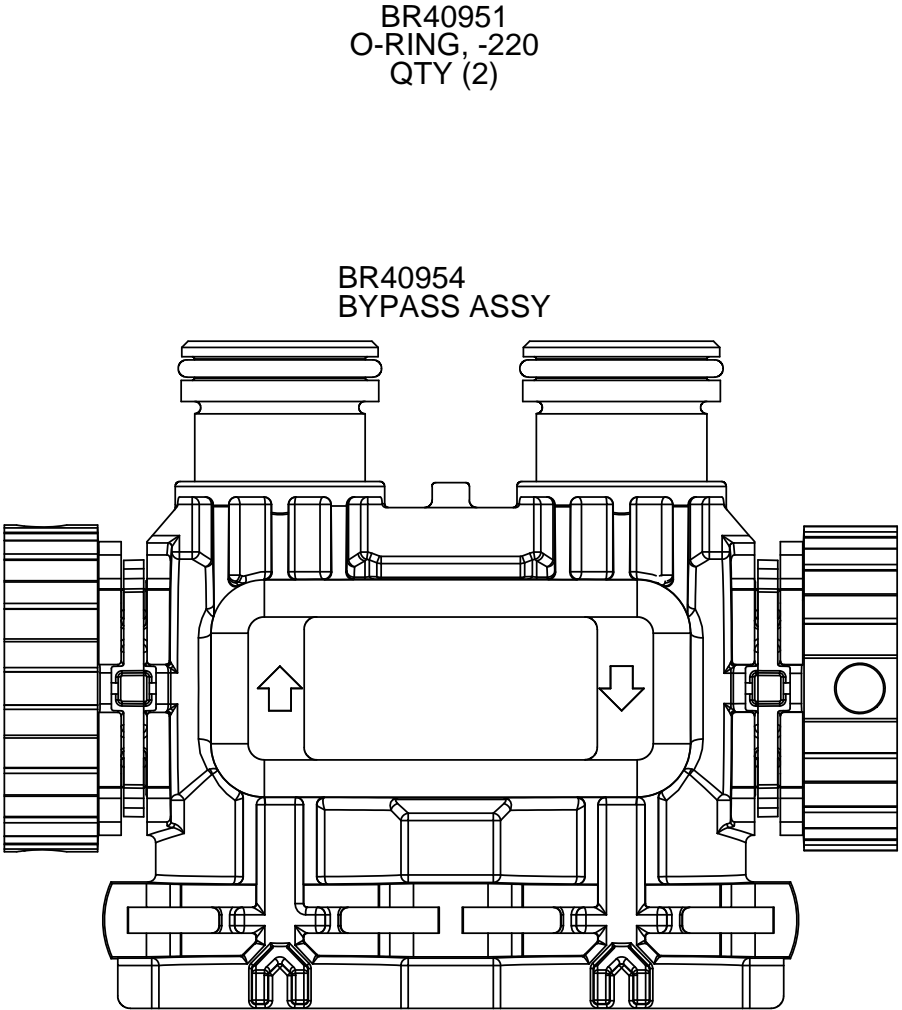
THE COMPONENT, PART, OR ASSEMBLY DESCRIBED IN THIS DOCUMENT MUST COMPLY WITH THE EU (EUROPEAN UNION) DIRECTIVES: RoHS DIRECTIVE 2002/95/EC THIS DRAWING MUST BE COMPARED TO THE ERP SYSTEM TO ENSURE CORRECT REVISION LEVEL PRIOR TO USE.

THIS DOCUMENT IS SOLELY THE PROPERTY OF PENTAIR WATER TREATMENT. REPRODUCTION, USE DISCLOSURE, OR TRANSMISSION OF THIS DOCUMENT OR DETAILS CONTAINED HEREIN, IN PART OR IN WHOLE, IS PROHIBITED WITHOUT THE WRITTEN CONSENT OF PENTAIR WATER TREATMENT ENGINEERING. THIS DOCUMENT AND ANY COPIES SHALL BE RETURNED TO PENTAIR WATER TREATMENT UPON WRITTEN REQUEST.

DO NOT SCALE DRAWING. DIMS. ARE IN INCHES [mm] INTERPRET DIMS AND TOLERANCES PER ASME Y14.5M -1994 UNLESS OTHERWISE SPECIFIED: CORNER FILLETS R.005-.020 [0.127-.508] TOLERANCES: ANGLES: \pm 1° 1 PLACE .X: \pm .015 [0.38] 2 PLACE .XX: \pm .01 [0.3] 3 PLACE .XXX: \pm .005 [0.13]

THIRD ANGLE PROJECTION	APPROVALS	DATE	 Pentair Residential Filtration
DRAWN	TITLE		
CHECKED	SIZE C	DWG NO.	
APPROVED	SCALE 1:1	SOLIDWORKS FORMAT	SHEET 1 OF 2

REVISIONS					
ZONE	ECN	REV.	DESCRIPTION	DATE	APP'D
			SEE SHEET ONE FOR LIST OF CHANGES		



BR40576
CLIP, H, PLASTIC
QTY (2)

BR40951
O-RING, -220
QTY (2)

BR40954
BYPASS ASSY

BR41211
O-RING, -217, 560CD
QTY (2)

BR41147
LABEL, BYPASS
QTY (1) (N1)

BR40571
PLUG, BYPASS
QTY (2)

BR40955
SEAL RETAINER
QTY (2)

BR17243-01
O-RING, -221, 560CD
QTY (2)

(P4) BR43214
LABEL, ASSEMBLED IN MEXICO
QTY (1)

BR41146
O-RING, -222
QTY (1)

**ASSEMBLY BOARD FOR 7000 BYPASS
BR40569**

LAST SAVED IN SMARTTEAM2/9/2011 9:15:49 AM		THE COMPONENT, PART, OR ASSEMBLY DESCRIBED IN THIS DOCUMENT MUST COMPLY WITH THE EU (EUROPEAN UNION) DIRECTIVES: RoHS DIRECTIVE 2002/95/EC	
CRITICALITY SYMBOLS PER QPSP-001.2 <input type="checkbox"/> LEVEL I <input checked="" type="checkbox"/> LEVEL II <input type="checkbox"/> LEVEL III		THIS DRAWING MUST BE COMPARED TO THE ERP SYSTEM TO ENSURE CORRECT REVISION LEVEL PRIOR TO USE.	
THIS DOCUMENT IS SOLELY THE PROPERTY OF PENTAIR WATER TREATMENT. REPRODUCTION, USE DISCLOSURE, OR TRANSMISSION OF THIS DOCUMENT OR DETAILS CONTAINED HEREIN, IN PART OR IN WHOLE, IS PROHIBITED WITHOUT THE WRITTEN CONSENT OF PENTAIR WATER TREATMENT ENGINEERING. THIS DOCUMENT AND ANY COPIES SHALL BE RETURNED TO PENTAIR WATER TREATMENT UPON WRITTEN REQUEST.		THIRD ANGLE PROJECTION	
APPROVALS	DATE	Pentair Residential Filtration	
DRAWN		TITLE	
CHECKED		SIZE C	DWG NO.
APPROVED		SCALE 1:1	REV P
DO NOT SCALE DRAWING. DIMS. ARE IN INCHES [mm] INTERPRET DIMS AND TOLERANCES PER ASME Y14.5M -1994 UNLESS OTHERWISE SPECIFIED: CORNER FILLETS R.005-.020 [.127-.508] TOLERANCES: ANGLES: ±1° 1 PLACE .X: ±.015 [0.38] 2 PLACE .XX: ±.01 [0.3] 3 PLACE .XXX: ±.005 [0.13]		SOLIDWORKS FORMAT	
		SHEET 2 OF 2	