

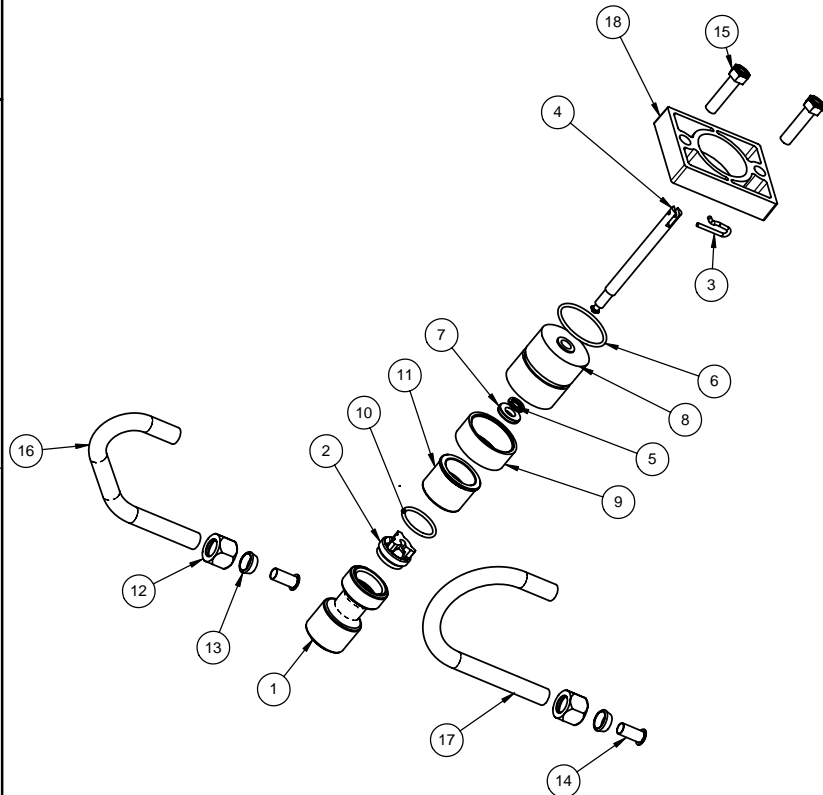
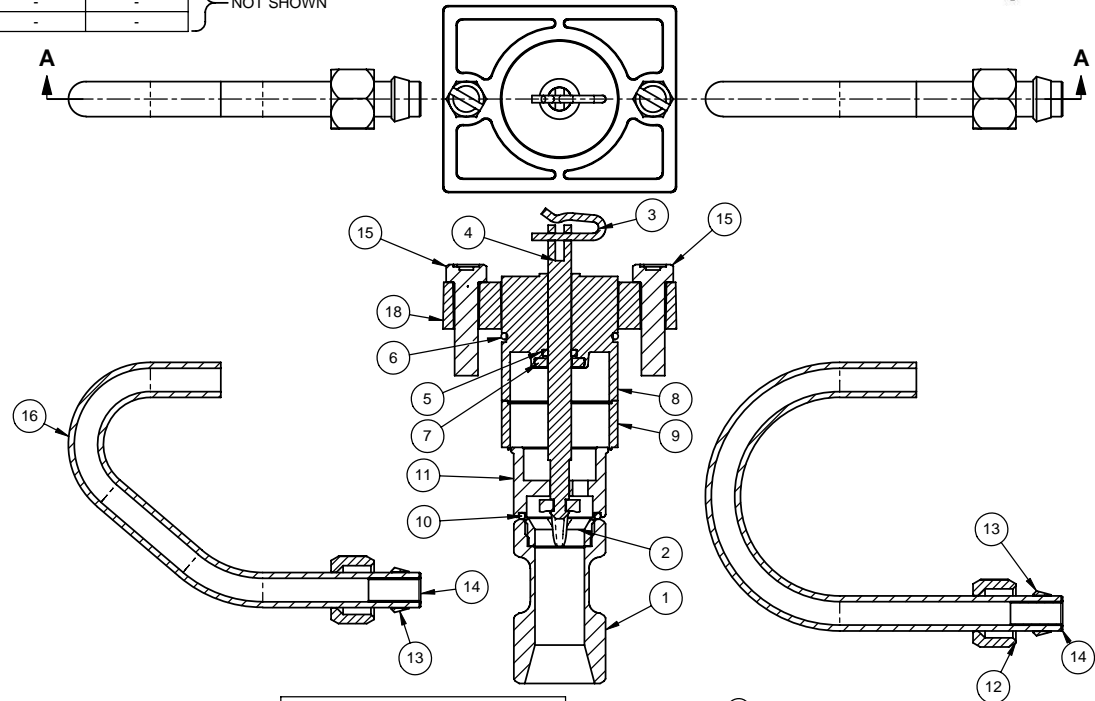
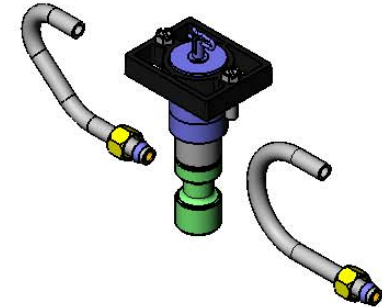
ITEM NO.	PART NUMBER	DESCRIPTION	BR60101-00 /QTY.	BR60101-01 /QTY.	BR60101-02 /QTY.	BR60101-03 /QTY.	BR60101-011 /QTY.	BR60101-021 /QTY.
1	BR15168	PISTON, 2500	1	1	1	1	1	1
2	BR14309	RETAINER, PISTON ROD	1	1	1	1	1	1
3	BR10909	PIN, CONNECTING ROD SPRING	1	1	1	1	1	1
4	BR19622	ROD,PISTON,2750 NHWBP	1	1	1	1	1	1
5	BR10209-01	QUAD RING, -010	-	-	-	-	1	1
	BR10209	QUAD RING, -010	1	1	1	1	-	-
6	BR10234-01	O-RING, -024, EPDM	-	-	-	-	1	1
	BR40078	O-RING, 28MM X 2MM	1	1	1	1	-	-
7	BR19615	RETAINER, QUAD	1	1	1	1	1	1
8	BR19616-03	PLUG,END, 2750,NHWBP	1	1	1	1	1	1
9	BR19669	EXTENSION, END PLUG,2750	1	1	1	1	1	1
10	BR16924	O-RING, -018	1	1	1	1	1	1
11	BR19626	PISTON, 2750, NHWBP	1	1	1	1	1	1
12	BR10329	FITTING,TUBE,3/8 NUT,BRASS	-	-	2	-	-	2
	BR15414	NUT,2900,W/SLEEVE	-	-	-	2	-	-
13	BR10330	FITTING,SLEEVE,3/8 CELCON	-	-	2	-	-	2
	BR10332	FITTING,INSERT,3/8	-	-	2	-	-	2
14	BR15415	FITTING,INSERT,1/2",TUBE	-	-	-	1	-	-
15	BR13386	SCREW, SLOTTED HEX HEAD	2	-	2	2	-	2
	BR14428	TUBE,BRINE VALVE	-	-	1	-	-	1
16	BR16460	TUBE, BRINE, 2850	-	-	-	1	-	-
17	BR15221-01	TUBE,BRINE VALVE, BLACK,HW	-	-	1	-	-	1
18	BR19670	SPACER, VALVE MOUNT, 2750	1	-	1	1	-	1
19	BR16895	BAG,POLY 7" X 8"	1	1	1	-	1	1
20	BR19725	PACKAGING,TUBE,PISTON, 1 1/2"	1	1	1	1	-	-
21	BR19725-C	CAP,PACKAGING,PISTON,1 1/2"	1	1	1	1	-	-

(B1)(B2)(B3)

(C1)

NOT SHOWN

REVISIONS					
ZONE	ECN	REV.	DESCRIPTION	DATE	APP'D
	14470	A	DRAWN ON SOLIDWORKS	10-10-05	JR
	20885	B	1-ADD'D: BR60101-00, 2-ADD'D: BR60101-021, 3-REM'D:BR60101-21	7-1-09	KS
	31675	C	1-ADD'D: PG-2, 2-ADD'D: BR16460	10DEC10	TJM
	32179	D	1-REM'D: NOTE: ITEM 19 (16895) & ITEM 20 (19850) ARE NOT SHOWN	21FEB11	TJM



LAST SAVED IN SMARTTEAM/25/2011 8:40:28 AM

CRITICALITY SYMBOLS PER QPSP-001.2

☐ LEVEL I ☒ LEVEL II ☐ LEVEL III

THIS DOCUMENT IS SOLELY THE PROPERTY OF PENTAIR WATER TREATMENT. REPRODUCTION, USE DISCLOSURE, OR TRANSMISSION OF THIS DOCUMENT OR DETAILS CONTAINED HEREIN, IN PART OR IN WHOLE, IS PROHIBITED WITHOUT THE WRITTEN CONSENT OF PENTAIR WATER TREATMENT ENGINEERING. THIS DOCUMENT AND ANY COPIES SHALL BE RETURNED TO PENTAIR WATER TREATMENT UPON WRITTEN REQUEST.

DO NOT SCALE DRAWING. DIMS. ARE IN INCHES (mm) UNLESS OTHERWISE SPECIFIED.
CORNER FILLET'S R .005-.020 (127-508)
TOLERANCES:
ANGLES: ±1°
1 PLACE .X: ±.015 (0.38)
2 PLACE .XX: ±.01 (0.25)
3 PLACE .XXX: ±.005 (0.13)

THE COMPONENT, PART, OR ASSEMBLY DESCRIBED IN THIS DOCUMENT MUST COMPLY WITH THE EU (EUROPEAN UNION) DIRECTIVES:
RoHS DIRECTIVE 2002/95/EC

THIS DRAWING MUST BE COMPARED TO THE ERP SYSTEM TO ENSURE CORRECT REVISION LEVEL PRIOR TO USE.

THIRD ANGLE PROJECTION

APPROVALS

DRAWN

CHECKED

APPROVED

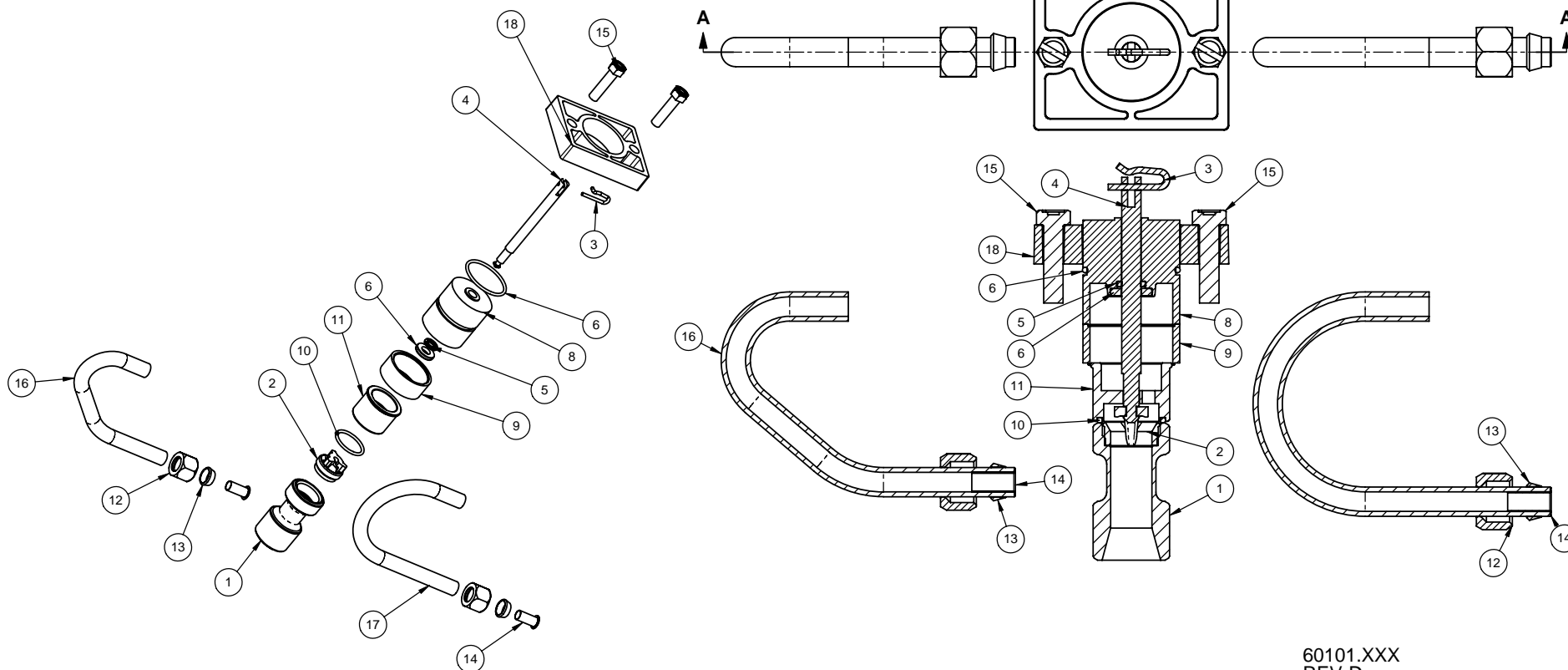
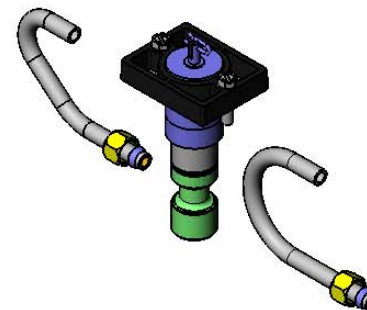
Pentair Residential Filtration

PISTON ASSY

SIZE C DWG NO. BR60101

SCALE 1:2 SOLIDWORKS FORMAT SHEET 1 OF 2

ITEM NO.	PART NUMBER	DESCRIPTION	BR60101-00 /QTY.	BR60101-01 /QTY.	BR60101-02 /QTY.	BR60101-03 /QTY.	BR60101-011 /QTY.	BR60101-021 /QTY.
1	BR15168	PISTON, 2500	1	1	1	1	1	1
2	BR14309	RETAINER, PISTON ROD	1	1	1	1	1	1
3	BR10909	PIN, CONNECTING ROD SPRING	1	1	1	1	1	1
4	BR19622	ROD,PISTON,2750 NHWBP	1	1	1	1	1	1
5	BR10209	QUAD RING, -.010	1	1	1	1	-	-
	BR10209-01	QUAD RING, -.010	-	-	-	-	1	1
6	BR10234-01	O-RING, -.024, EPDM	-	-	-	-	1	1
	BR19615	RETAINER, QUAD	1	1	1	1	1	1
7	BR40078	O-RING, 28MM X 2MM	1	1	1	1	-	-
8	BR19616-03	PLUG,END, 2750,NHWBP	1	1	1	1	1	1
9	BR19669	EXTENSION, END PLUG,2750	1	1	1	1	1	1
10	BR16924	O-RING, -.018	1	1	1	1	1	1
11	BR19626	PISTON, 2750, NHWBP	1	1	1	1	1	1
12	BR10329	FITTING,TUBE,3/8 NUT,BRASS	-	-	2	-	-	2
	BR15414	NUT,2900,W/SLEEVE	-	-	-	2	-	-
13	BR10330	FITTING,SLEEVE,3/8 CELCON	-	-	2	-	-	2
	BR10332	FITTING,INSERT,3/8	-	-	2	-	-	2
14	BR15415	FITTING,INSERT,1/2",TUBE	-	-	-	1	-	-
15	BR13386	SCREW, SLOTTED HEX HEAD	2	-	2	2	-	2
	BR14428	TUBE,BRINE VALVE	-	-	1	-	-	1
	BR16460	TUBE, BRINE, 2850	-	-	-	1	-	-
17	BR15221-01	TUBE,BRINE VALVE, BLACK,HW	-	-	1	-	-	1
18	BR19670	SPACER, VALVE MOUNT, 2750	1	-	1	1	-	1



60101.XXX
REV-D