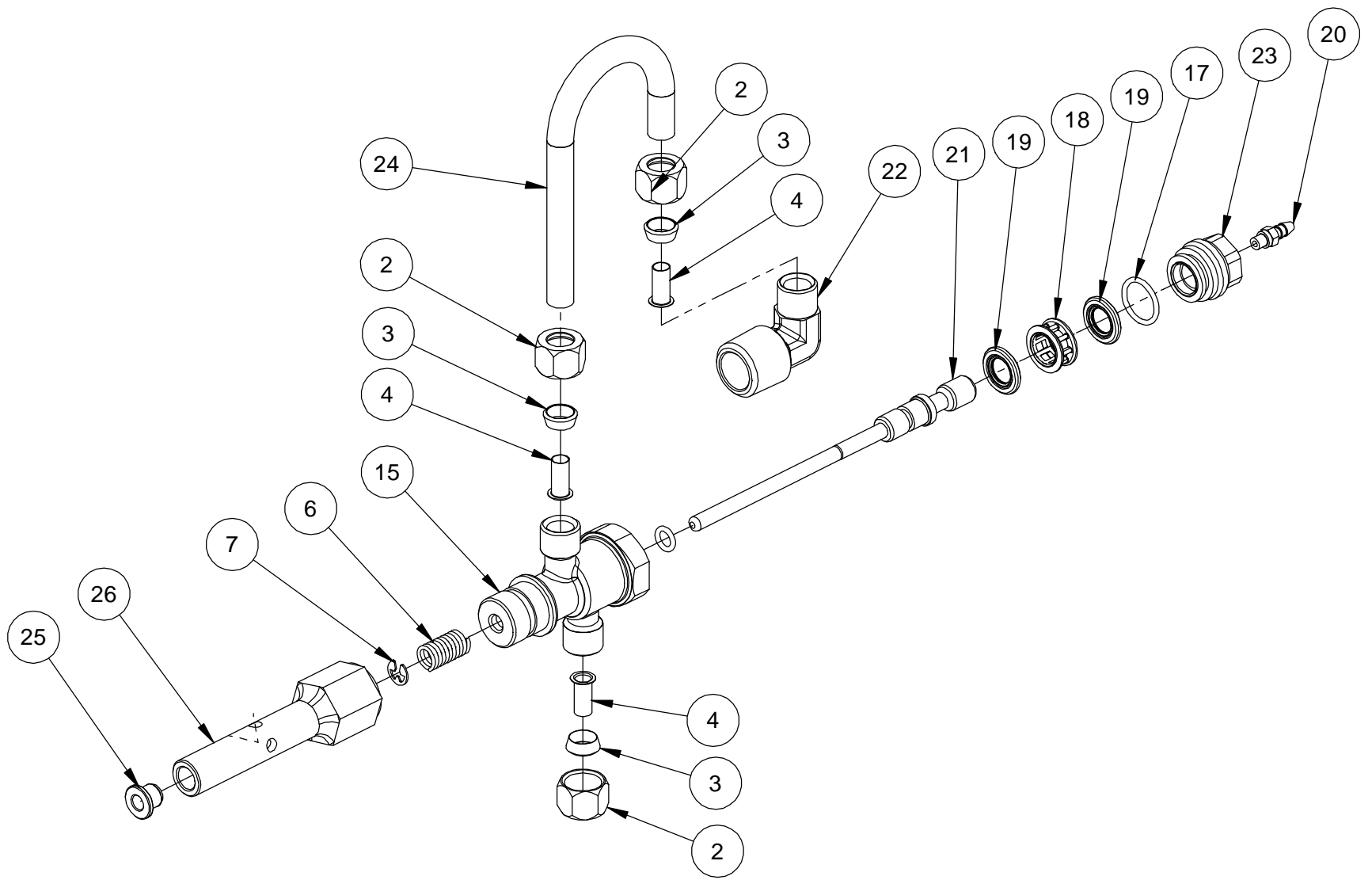


**BR60150 & BR60150-01**



**BR60150-3150**

REVISIONS					
ZONE	ECN	REV.	DESCRIPTION	DATE	APPD
	21322	A	RELEASE DRAWING INTO THE SYSTEM.	10-1-09	KS

ITEM NO.	PART NUMBER	DESCRIPTION	Default /QTY.	BR60150-01 /QTY.	BR60150-3150 /QTY.
1	BR10785-01	SVO BODY ASSY, LESS WASHER	1	1	-
2	BR10329	FITTING,TUBE,3/8 NUT,BRASS	3	3	3
3	BR10330	FITTING,SLEEVE,3/8 CELCON	3	3	3
4	BR10332	FITTING,INSERT,3/8	3	3	3
5	BR11749	GUIDE,BRINE VALVE STEM	1	1	-
6	BR10249	SPRING,BRINE VALVE	1	1	1
7	BR10250	RING,RETAINING	1	1	1
8	BR10331	FITTING,COMPRESSION,1/4"X 3/8"	1	-	-
	BR10328	FITTING,ELBOW,90 DEG.	-	1	-
9	BR10312	WASHER, 5/32	1	1	-
10	BR12094	WASHER, FLOW CONTROL, .25 GPM	1	1	-
11	BR12550	QUAD RING, -009	1	1	-
12	BR12629	LABEL, SVO PORTING	1	1	-
13	BR12552	BRINE, VALVE STEM ,1600	1	1	-
14	BR12626	SEAT, BRINE VALVE	1	1	-
15	BR15074	BODY,SVO	-	-	1
16	BR10141	O-RING, -010	-	-	1
17	BR12977	O-RING, -015	-	-	1
18	BR14834	SPACER, SOFT WATER FILL	-	-	1
19	BR14835	SEAL,3150	-	-	2
20	BR15965	FITTING,BIAS	-	-	1
21	BR16065	PISTON & STEM,SVO	-	-	1
22	BR16503	FITTING, ELBOW, 90 DEG	-	-	1
23	BR16509	PLUG, END, SVO	-	-	1
24	BR16511	TUBE,3150,PVC,SVO	-	-	1
25	BR14407	BUSHING, STEM, SVO	-	-	1
26	BR16066	STEM GUIDE, SVO	-	-	1

NOT SHOWN -

**OBSOLETE SEE ECO F5169**

LAST SAVED IN SMARTTEAM: 10/05/2009 09:53

CRITICALITY SYMBOLS PER QPSP-001.2  
 LEVEL I    LEVEL II    LEVEL III

THIS DOCUMENT IS SOLELY THE PROPERTY OF PENTAIR WATER TREATMENT. REPRODUCTION, USE DISCLOSURE, OR TRANSMISSION OF THIS DOCUMENT OR DETAILS CONTAINED HEREIN, IN PART OR IN WHOLE, IS PROHIBITED WITHOUT THE WRITTEN CONSENT OF PENTAIR WATER TREATMENT ENGINEERING. THIS DOCUMENT AND ANY COPIES SHALL BE RETURNED TO PENTAIR WATER TREATMENT UPON WRITTEN REQUEST.

DO NOT SCALE DRAWING. DIMS. ARE IN INCHES [mm]  
 INTERPRET DIMS AND TOLERANCES PER ASME Y14.5M -1994  
 UNLESS OTHERWISE SPECIFIED:  
 CORNER FILLETS R.005-020 [127-508]  
 TOLERANCES:  
 ANGLES: ± 1°  
 1 PLACE .X: ± .015 [0.38]  
 2 PLACE .XX: ± .01 [0.3]  
 3 PLACE .XXX: ± .005 [0.13]

THE COMPONENT, PART, OR ASSEMBLY DESCRIBED IN THIS DOCUMENT MUST COMPLY WITH THE EU (EUROPEAN UNION) DIRECTIVES: ROHS DIRECTIVE 2002/95/EC

THIS DRAWING MUST BE COMPARED TO THE ERP SYSTEM TO ENSURE CORRECT REVISION LEVEL PRIOR TO USE.

THIRD ANGLE PROJECTION

APPROVALS: DRAWN TJM, CHECKED, APPROVED

DATE: 9-30-09

**Pentair Water** Pentair Residential Filtration

TITLE: SVO ASSY, 1600, O/S

SIZE: C DWG NO.: BR60150 REV: A

SCALE: 1:2 SOLIDWORKS FORMAT SHEET 1 OF 1