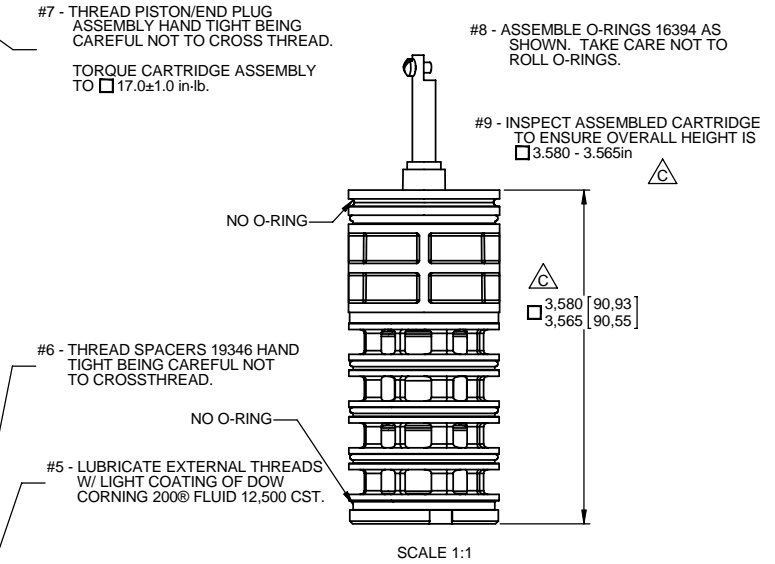
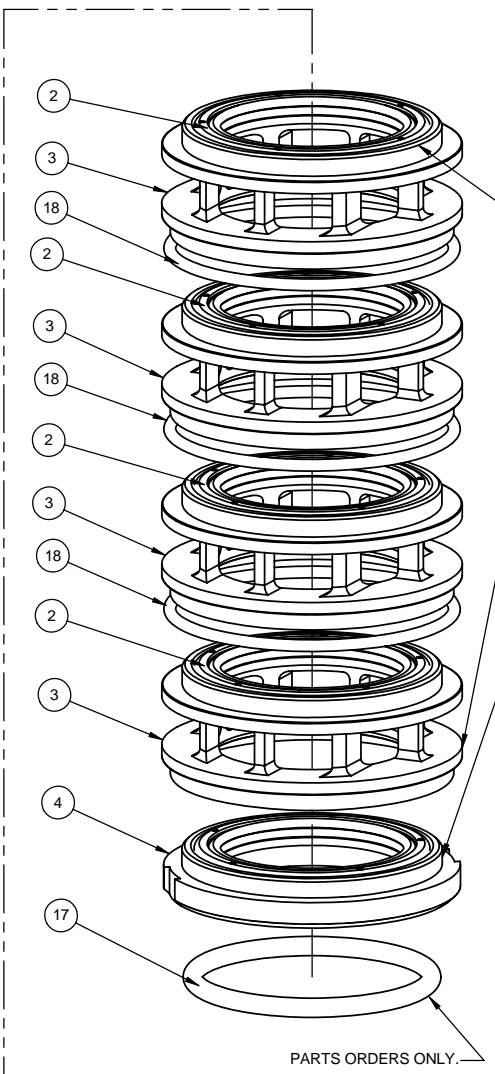
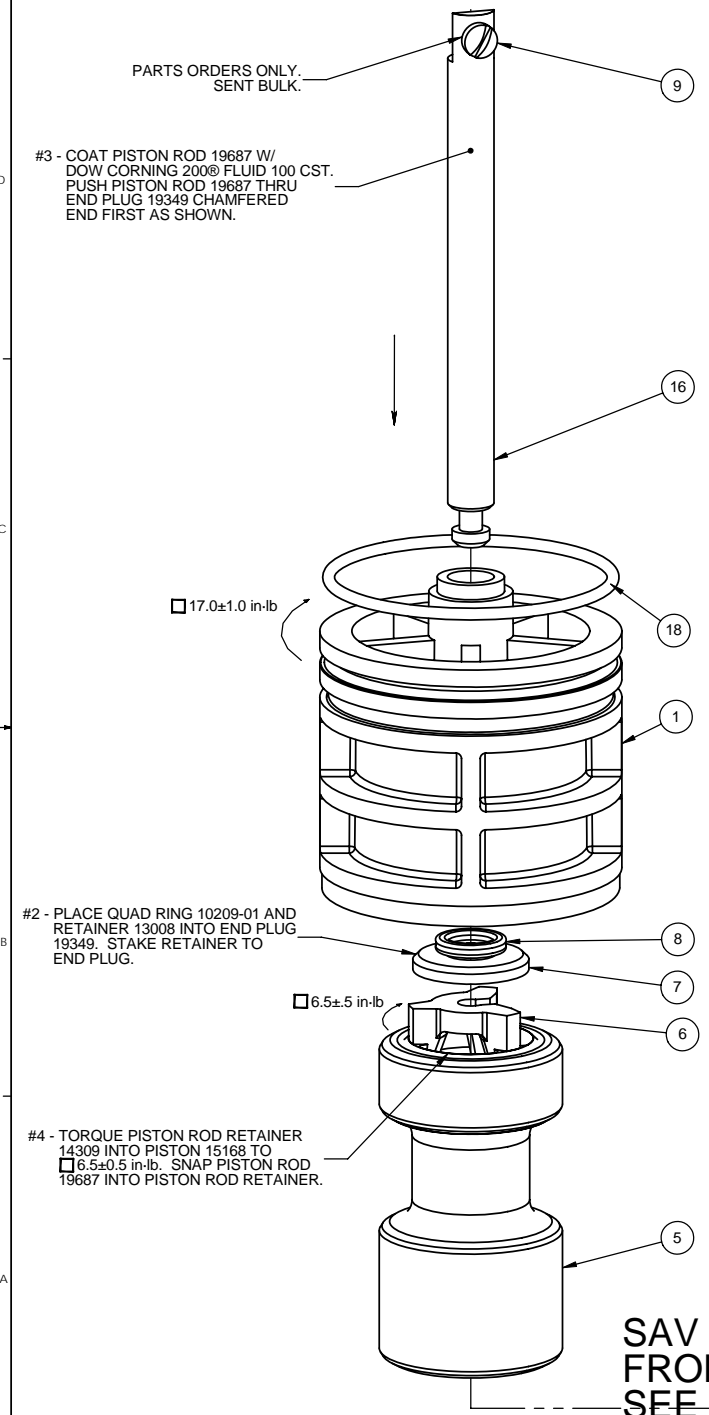


| REVISIONS | | | | | |
|-----------|-------|------|---|---------|-------|
| ZONE | ECN | REV. | DESCRIPTION | DATE | APP'D |
| | 13066 | A | CREATED DRAWING | 11/8/04 | JS |
| | 13922 | B | TORQUE CARTRIDGE ASSEMBLY 17±1inlb WAS 19±1inlb | 5/23/05 | JJR |
| | 15600 | C | OVERALL HEIGHT 3.580/3.565 WAS 3.575±.005 | 3/2/06 | JJR |
| | 18632 | D | 1-ADDED: ITEM BALLOONS TO DRAWING. 2-ADDED: BR60159-01 ASSEMBLY TO BILL OF MATERIAL. | 2-19-08 | TLE |
| | 18998 | E | 1-ADD: BR60159-001 TO BOM CHART, 2-ADD: BR16895 | 4-30-08 | TLE |



| ITEM | PART NO | DESCRIPTION | BR60159 | BR60159-01 | BR60159-001 |
|------|------------|-------------------------------------|---------|------------|-------------|
| 1 | 19349 | END PLUG DF | 1 | 1 | 1 |
| 2 | BR10545 | SEAL,PISTON | 5 | 5 | 5 |
| 3 | 19346 | SPACER DF | 4 | 4 | 4 |
| 4 | 19348 | RING, END,BITE | 1 | 1 | 1 |
| 5 | 15168 | PISTON, 2500 | 1 | 1 | 1 |
| 6 | BR14309 | RETAINER,PISTON ROD | 1 | 1 | 1 |
| 7 | BU13008 | RETAINER, END PLUG SEAL | 1 | 1 | 1 |
| 8 | 10209-01 | QUAD RING,-010, 560CD | 1 | 1 | 1 |
| 9 | BR11335 | SCREW, FILLISTER HEAD, #4-40 X .19 | 1 | 1 | 1 |
| 10 | BR13287-01 | O-RING, 123, 560CD | - | - | 1 |
| 11 | BU16394-01 | O-RING, -029, 560CD | - | - | 4 |
| 12 | 19984 | ROD WATER RIGHT PISTON | - | 1 | 1 |
| 13 | BR17020 | SCREW, HEX WASHER HEAD, #6-20 X .38 | - | - | 1 |
| 14 | BR19688 | LINK, PISTON ROD | - | - | 1 |
| 15 | 16895 | BAG, POLY 6" X 8" | - | 1 | 1 |
| 16 | BR19687 | ROD,PISTON,4200,SS | 1 | - | - |
| 17 | BR13287 | O-RING, 123 | 1 | 1 | - |
| 18 | BU16394 | O-RING, -029 | 4 | 4 | - |
| 19 | 13363 | WASHER, PLAIN, .145 ID SS | - | - | 1 |

SAV ONLY FROM 04/2011 TO 04/2011 SEE ECO F5349

LAST SAVED IN SMARTTEAM: 05/09/2008 14:07

CRITICALITY SYMBOLS PER QPSP-001.2
 LEVEL I LEVEL II LEVEL III

THIS DOCUMENT IS SOLELY THE PROPERTY OF PENTAIR WATER TREATMENT. REPRODUCTION, USE, DISCLOSURE, OR TRANSMISSION OF THIS DOCUMENT OR DETAILS CONTAINED HEREIN, IN PART OR IN WHOLE, IS PROHIBITED WITHOUT THE WRITTEN CONSENT OF PENTAIR WATER TREATMENT ENGINEERING. THIS DOCUMENT AND ANY COPIES SHALL BE RETURNED TO PENTAIR WATER TREATMENT UPON WRITTEN REQUEST.

DO NOT SCALE DRAWING. DIMS. ARE IN INCHES (mm) UNLESS OTHERWISE SPECIFIED.
 CORNER FILLETS R.005-.020 (127-.508)
 TOLERANCES:
 ANGLES: ±1°
 1 PLACE .X: ±.015 (0.38)
 2 PLACE .XX: ±.01 (0.2)
 3 PLACE .XXX: ±.005 (0.13)

THIS DRAWING MUST BE COMPARED TO THE ERP SYSTEM TO ENSURE CORRECT REVISION LEVEL PRIOR TO USE.

| | | | | | |
|------------------------|--|------------|--|--|-------------------|
| THIRD ANGLE PROJECTION | | | | | |
| APPROVALS | | DATE | | TITLE | |
| DRAWN | | 11/08/2004 | | CARTRIDGE ASSEMBLY,4200 W/PISTON,SEALS,SPACERS | |
| CHECKED | | DATE | | SIZE C | DWG NO. BR60159 |
| APPROVED | | DATE | | SCALE 1:1 | SOLIDWORKS FORMAT |
| | | | | SHEET 1 OF 1 | |

Pentair Water Brookfield
 P.O. BOX 730
 BROOKFIELD, WI 53008-0730