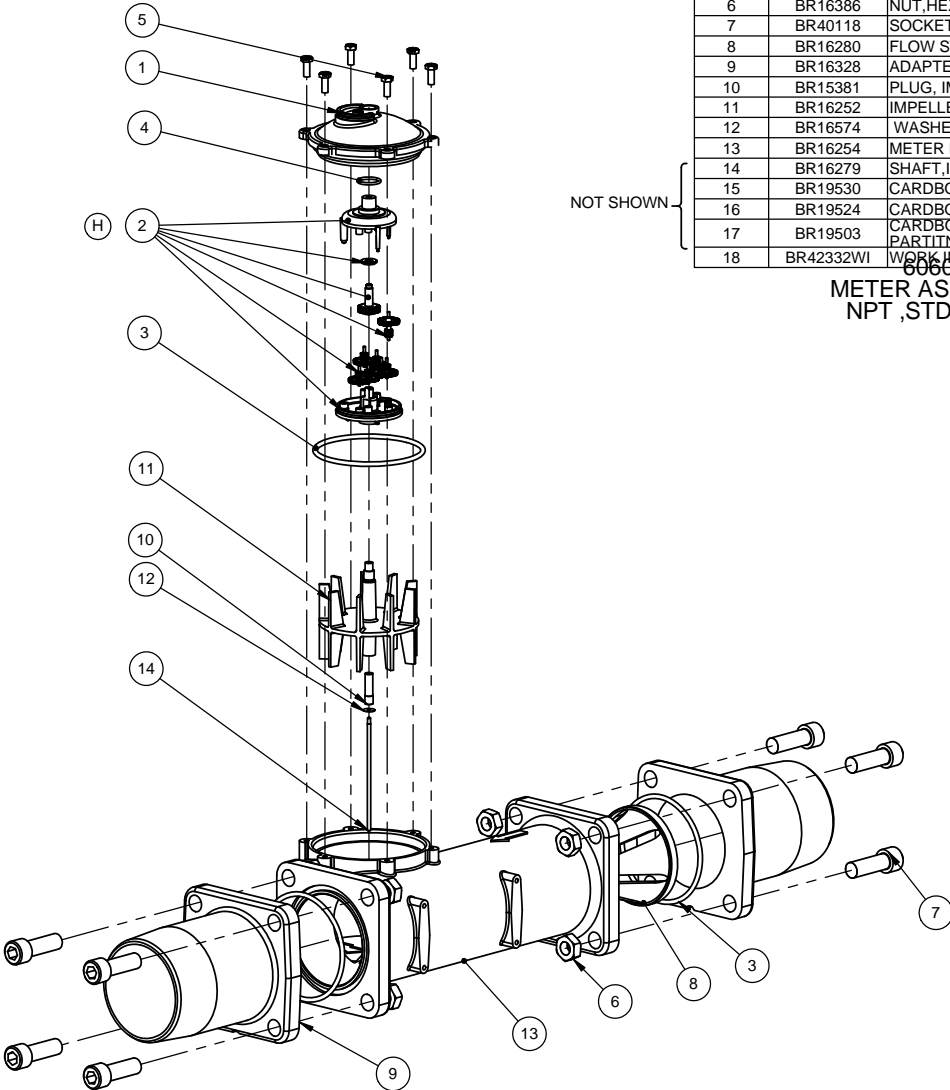


ITEM NO.	PART NUMBER	DESCRIPTION	QTY.
1	BR16253	CAP,METER,3900	1
2	BR61449	METER FRAME ASSY	1
	BR13832	RETAINER,SEAL	1
	BR15804	FRAME,GEAR	1
	BR40180	GEAR,OUTPUT,METER	1
	BR13825	GEAR, METER CHANGE LEVEL	1
	BR13510	GEAR, IDLER	6
	BR15312	PLATE,INTERMEDIATE,MACHINED	1
	BR42332WI	WORK INSTRUCTION, METER	1
	BR10209-01	QUAD RING, -010	1
E1	3	BR15707 O-RING, -236	3
E2	4	BR11982 O-RING, -016	1
	5	BR12112 SCREW, SLOTTED HEX HEAD	6
	6	BR16386 NUT,HEX JAM,1/2-13,18-8,SS	8
	7	BR40118 SOCKET, CAP SCREW	8
	8	BR16280 FLOW STRAIGHTENER	1
	9	BR16328 ADAPTER,FLANGE,3"	2
	10	BR15381 PLUG, IMPELLER 2" METER	1
	11	BR16252 IMPELLER, 3900	1
	12	BR16574 WASHER,PLAIN,SS	1
	13	BR16254 METER BODY, 3"	1
	14	BR16279 SHAFT,IMPELLER	1
	15	BR19530 CARDBOARD, INSERT METER	1
	16	BR19524 CARDBOARD,INSERT BOTTOM PAD	1
	17	BR19503 CARDBOARD, FLECK 6 PARTITN/LNG	2
	18	BR42332WI WORK INSTRUCTION, METER 60608-01	1

METER ASSY,3" INLN,
NPT ,STD,BRS,PDL



NOT SHOWN

REVISIONS					
ZONE	ECN	REV.	DESCRIPTION	DATE	APP'D
	16862	C	REVISED NOTES, UPDATED DESCRIPTIONS	02-08-07	AB
	17572	D	UPDATED ASSY USING MODIFIED SUB-ASSY 61449, UPDATED NOTES WITH CORRECT ITEM#	06-27-07	AB
	19397	E	1-REMD: 16812 @ ITEM 2, 2-REMD: 16668 @ ITEM 5, (ALL #S MOVED UP TO FILL IN 4 & 5) 3-REMD: 7. INSTALL ITEM 14 PLATE. INSTALL ITEM SCREWS TORQUE TO 10 TO 20 IN-LB. NO THREAD SEALER IS USED. 4-UPDATED ALL ITEM #S IN NOTES.	10-9-08	AB
	20256	F	1-WAS: 15886 (ON PG-1 & PG-2 BOM'S)	5-1-09	AB
	31124	G	1-ADDED TORQUE TABLE & CENTER LINES IN VIEW. 2-ADD ITEM #15, 16, & 17 IN BR60608-21 3-ADD ITEM #20, 21, & 22 IN BR60608-22	9-20-10	AB
	32807	H	PN "17711" SEAL, LIP" REPLACED WITH PN "10209-01" QUAD RING, -010, 560CD"	07/19/11	AB

ITEM NO.	PART NUMBER	DESCRIPTION	QTY.
1	BR16253	CAP,METER,3900	1
2	BR61449	METER FRAME ASSY	1
	BR13832	RETAINER,SEAL	1
	BR15804	FRAME,GEAR	1
	BR40180	GEAR,OUTPUT,METER	1
	BR13825	GEAR, METER CHANGE LEVEL	1
D	BR13510	GEAR, IDLER	6
	BR15312	PLATE,INTERMEDIATE,MACHINED	1
	BR42332WI	WORK INSTRUCTION, METER	1
	BR10209-01	QUAD RING, -010	1
E1	3	BR15707 O-RING, -236	3
F1 E2	4	BR11982-01 O-RING, -016, 560CD	1
	5	BR12112 SCREW, SLOTTED HEX HEAD	6
	6	BR16386 NUT,HEX JAM,1/2-13,18-8,SS	8
	7	BR40118 SOCKET, CAP SCREW	8
	8	BR16280 FLOW STRAIGHTENER	1
	9	BR16328-10 ADAPTER,FLANGE,3",BSP	2
	10	BR15381 PLUG, IMPELLER 2" METER	1
	11	BR16252 IMPELLER, 3900	1
	12	BR16574 WASHER,PLAIN,SS	1
	13	BR16254-20 METER BODY, 3", METRIC	1
G2	14	BR16279 SHAFT,IMPELLER	1
	15	BR19530 CARDBOARD, INSERT METER	1
	16	BR19524 CARDBOARD,INSERT BOTTOM PAD	1
	17	BR19503 CARDBOARD, FLECK 6 PARTITN/LNG	2
	18	BR42332WI WORK INSTRUCTION, METER 60608-21	1

METER ASSY,3" INLN,BSP/MET
STD,BRS,PDL

SCREW TORQUE TABLE			
ITEM NO.	PART NUMBER	DESCRIPTION	REQ'D TORQUE
5	BR12112	SCREW, SLOTTED HEX HEAD	10 IN-LB ±10%
7	BR40118	SCREW, SCKT HD, 1/2-13 UN	80 IN-LB ±10%

LAST SAVED IN SMARTEAMQ/26/2010 1:02:29 PM

CRITICALITY SYMBOLS PER QPSP-001.2

LEVEL I LEVEL II LEVEL III

THIS DOCUMENT IS SOLELY THE PROPERTY OF PENTAIR WATER TREATMENT. REPRODUCTION, USE, DISCLOSURE, OR TRANSMISSION OF THIS DOCUMENT OR DETAILS CONTAINED HEREIN, IN PART OR IN WHOLE, IS PROHIBITED WITHOUT THE WRITTEN CONSENT OF PENTAIR WATER TREATMENT ENGINEERING. THIS DOCUMENT AND ANY COPIES SHALL BE RETURNED TO PENTAIR WATER TREATMENT UPON WRITTEN REQUEST.

DO NOT SCALE DRAWING. DIMS. ARE IN INCHES (mm) UNLESS OTHERWISE SPECIFIED.
CORNER FILLETS R.005-020 (1.27-.508)
TOLERANCES:
ANGLES: ±.1°
1 PLACE .X: ±.015 (0.38)
2 PLACE .XX: ±.01 (0.25)
3 PLACE .XXX: ±.005 (0.13)

THE COMPONENT, PART, OR ASSEMBLY DESCRIBED IN THIS DOCUMENT MUST COMPLY WITH THE EU (EUROPEAN UNION) DIRECTIVES: RHM DIRECTIVE 2002/95/EC
THIS DRAWING MUST BE COMPARED TO THE ERP SYSTEM TO ENSURE CORRECT REVISION LEVEL PRIOR TO USE.

THIRD ANGLE PROJECTION	
APPROVALS	DATE
DRAWN	
CHECKED	
APPROVED	

Pentair Residential Filtration

TITLE
METER ASSY, 3" INLN,BRS,PDL

SIZE **C** DWG NO. **BR60608** REV **G.**

SCALE 1:4 SOLIDWORKS FORMAT SHEET 1 OF 3

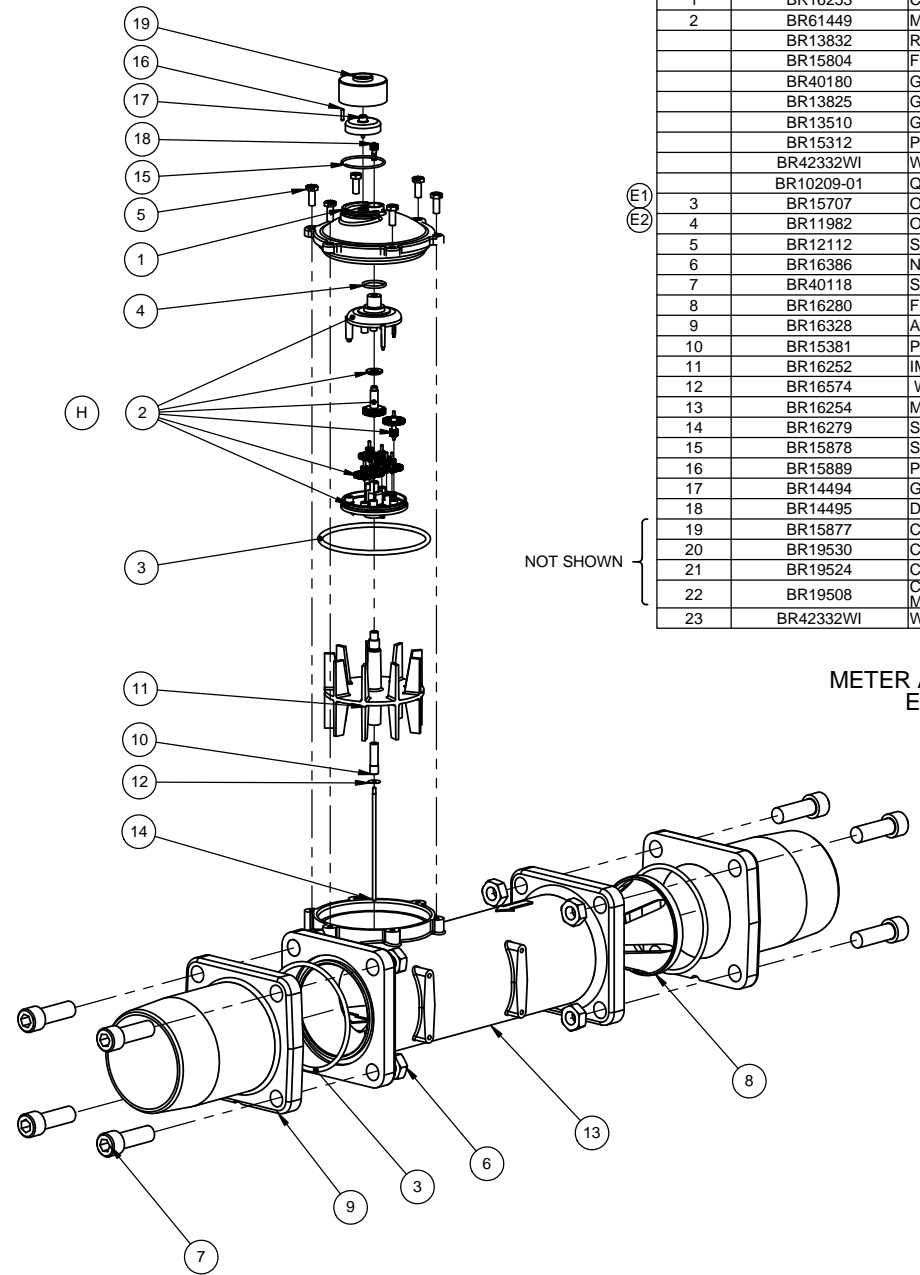
ITEM NO.	PART NUMBER	DESCRIPTION	QTY.	
1	BR16253	CAP,METER,3900	1	
2	BR61449	METER FRAME ASSY	1	
	BR13832	RETAINER,SEAL	1	
	BR15804	FRAME,GEAR	1	
	BR40180	GEAR,OUTPUT,METER	1	
	BR13825	GEAR, METER CHANGE LEVEL	1	
	BR13510	GEAR, IDLER	6	
	BR15312	PLATE,INTERMEDIATE,MACHINED	1	
	BR42332WI	WORK INSTRUCTION, METER	1	
	BR10209-01	QUAD RING, -.010	1	
(E1)	3	BR15707	O-RING, -.236	3
(E2)	4	BR11982	O-RING, -.016	1
	5	BR12112	SCREW, SLOTTED HEX HEAD	6
	6	BR16386	NUT,HEX JAM,1/2-13,18-8,SS	8
	7	BR40118	SOCKET, CAP SCREW	8
	8	BR16280	FLOW STRAIGHTENER	1
	9	BR16328	ADAPTER,FLANGE,3"	2
	10	BR15381	PLUG, IMPELLER 2" METER	1
	11	BR16252	IMPELLER, 3900	1
	12	BR16574	WASHER,PLAIN,SS	1
	13	BR16254	METER BODY, 3"	1
	14	BR16279	SHAFT,IMPELLER	1
	15	BR15878	SPRING,RETAINING	1
	16	BR15889	PIN,METER CAP	1
	17	BR14494	GEAR, OUTPUT	1
	18	BR14495	DRIVE PINION	1
	19	BR15877	CAP,METER,EXT RANGE	1
	20	BR19530	CARDBOARD, INSERT METER	1
	21	BR19524	CARDBOARD,INSERT BOTTOM PAD	1
	22	BR19508	CARDBOARD,INSERT 3" REMOTE MET	2
	23	BR42332WI	WORK INSTRUCTION, METER	1

REVISIONS					
ZONE	ECN	REV.	DESCRIPTION	DATE	APPD
			SEE SHEET 1 FOR ALL REVISIONS		

BOM Table				
ITEM NO.	PART NUMBER	DESCRIPTION	QTY.	
1	BR16253	CAP,METER,3900	1	
2	BR61449	METER FRAME ASSY	1	
	BR13832	RETAINER,SEAL	1	
	BR15804	FRAME,GEAR	1	
	BR40180	GEAR,OUTPUT,METER	1	
	BR13825	GEAR, METER CHANGE LEVEL	1	
	BR13510	GEAR, IDLER	6	
	BR15312	PLATE,INTERMEDIATE,MACHINED	1	
	BR42332WI	WORK INSTRUCTION, METER	1	
	BR10209-01	QUAD RING, -.010	1	
(D)	3	BR15707	O-RING, -.236	3
(E1)	4	BR11982-01	O-RING, -.016, 560CD	1
(E2)	5	BR12112	SCREW, SLOTTED HEX HEAD	6
(F1)	6	BR16386	NUT,HEX JAM,1/2-13,18-8,SS	8
(F2)	7	BR40118	SOCKET, CAP SCREW	8
	8	BR16280	FLOW STRAIGHTENER	1
	9	BR16328-10	ADAPTER,FLANGE,3",BSP	2
	10	BR15381	PLUG, IMPELLER 2" METER	1
	11	BR16252	IMPELLER, 3900	1
	12	BR16574	WASHER,PLAIN,SS	1
	13	BR16254-20	METER BODY, 3", METRIC	1
	14	BR16279	SHAFT,IMPELLER	1
	15	BR15878	SPRING,RETAINING	1
	16	BR15889	PIN,METER CAP	1
	17	BR14494	GEAR, OUTPUT	1
	18	BR14495	DRIVE PINION	1
(G3)	19	BR15877	CAP,METER,EXT RANGE	1
	20	BR19530	CARDBOARD, INSERT METER	1
	21	BR19524	CARDBOARD,INSERT BOTTOM PAD	1
	22	BR19508	CARDBOARD,INSERT 3" REMOTE MET	2
	23	BR42332WI	WORK INSTRUCTION, METER	1

60608-02
METER ASSY,3" INLN,NPT,
EXT,BRS,PDL

60608-22
METER ASSY,3" INLN,BSPMET
EXT,BRS,PDL



LAST SAVED IN SMARTEAMQ/26/2010 1:02:29 PM

CRITICALITY SYMBOLS PER QPSP-001.2
 LEVEL I LEVEL II LEVEL III

THIS DOCUMENT IS SOLELY THE PROPERTY OF PENTAIR WATER TREATMENT. REPRODUCTION, USE, DISCLOSURE, OR TRANSMISSION OF THIS DOCUMENT OR DETAILS CONTAINED HEREIN, IN PART OR IN WHOLE, IS PROHIBITED WITHOUT THE WRITTEN CONSENT OF PENTAIR WATER TREATMENT ENGINEERING. THIS DOCUMENT AND ANY COPIES SHALL BE RETURNED TO PENTAIR WATER TREATMENT UPON WRITTEN REQUEST.

DO NOT SCALE DRAWING. DIMS. ARE IN INCHES (mm) INTERPRET DIMS AND TOLERANCES PER ASME Y14.5M-1994 UNLESS OTHERWISE SPECIFIED.
 CORNER FILLETS R.005-020 [1.27-.508]
 TOLERANCES:
 ANGLES: ±.1°
 1 PLACE .XX: ±.015 [0.38]
 2 PLACE .XXX: ±.01 [0.25]
 3 PLACE .XXX: ±.005 [0.13]

THE COMPONENT, PART, OR ASSEMBLY DESCRIBED IN THIS DOCUMENT MUST COMPLY WITH THE EU (EUROPEAN UNION) DIRECTIVES: R0HS DIRECTIVE 2002/95/EC		THIS DRAWING MUST BE COMPARED TO THE ERP SYSTEM TO ENSURE CORRECT REVISION LEVEL PRIOR TO USE.	
THIRD ANGLE PROJECTION			
APPROVALS	DATE	Pentair Residential Filtration TITLE METER ASSY, 3" INLN,BRS,PDL SIZE C DWG NO. BR60608 REV G. SCALE 1:4 SOLIDWORKS FORMAT SHEET 2 OF 3	
DRAWN			
CHECKED			
APPROVED			

4

3

2

1

REVISIONS

ZONE	ECN	REV.	DESCRIPTION	DATE	APP'D
			SEE SHEET 1 FOR ALL REVISIONS		

NOTES:

1. ASSEMBLE AND GLUE THE GEAR FRAME ASSEMBLY PER DRAWING 42332WI.
2. INSTALL ITEM #4 O-RING.
3. PRESS THE ASSEMBLED FRAME INTO ITEM 1 CAP.
4. TEST BY DRIVING THE GEAR USING TESTER F1743 FOR 5 SECONDS MINIMUM. MOTION AND SOUND SHOULD BE UNIFORM. IF NOT, REPLACE GEARS AND REPEAT.
5. NOTES IN STEP 5 APPLY ONLY TO 60608-02 EXT. AND 60608-22EXT:
 - 5A. POUND ITEM #16 PIN INTO ITEM #19 CAP WITH A SMALL HAMMER.
 - 5B. INSTALL ITEM #15 SPRING INTO THE GROOVE ON ITEM #1 CAP WITH THE OPEN ENDS CLEARING THE PIN.
 - 5C. INSTALL ITEM #18 GEAR BY ALIGNING THE 3 FLATS AND PUSHING IT DOWN.
 - 5D. INSTALL ITEM #17 GEAR.
 - 5E. INSTALL THE BACK HALF ON THE ITEM #19 CAP IN PLACE OVER THE SPRING FIRST, THEN THE HALF OF THE CAP WITH THE PIN LAST, UNTIL YOU HEAR IT SNAP. IF REQUIRED, USE TOOL F1806 TO DEPRESS THE SPRING AS THE CAP IS BEING INSTALLED. IT SHOULD BE HEARD TO SNAP ON.
 - 5F. TWIST ITEM #19 CAP TO MAKE SURE THAT IT SEATED AND HELD IN PLACE BY THE SPRING
6. INSTALL ITEM # 3 O-RING.
- 7.
8. INSTALL ITEM #14 SHAFT WITH SMALL DIAMETER UP AS SHOWN.
9. INSTALL ITEM # 12 WASHER SO THAT IT SLIDES DOWN ITEM #14 SHAFT.
10. INSTALL ITEM # 10 PLUG INTO ITEM #11 IMPELLER. THE PLUG SHOULD PROTRUDE OUT OF THE IMPELLER AFTER INSTALLATION AN AMOUNT EQUAL TO APPROXIMATELY ONE HALF THE THICKNESS OF A PENNY.
11. INSTALL ASSEMBLED ITEMS #10 AND #11 IMPELLER ON TO ITEM #14 SHAFT. INSTALL CAP ASSEMBLY ON ITEM #13 BODY AND POSITIONED PER THE PICTURE. INSTALL #5 SCREWS.
12. ASSEMBLE BALANCE OF PARTS: ITEMS ##6,7,8,9. THE NOTCHES ON ITEM #9 ADAPTER FLANGE ARE TO BE FACING DOWN(AWAY FROM THE CAP). THE ITEM #7 SCREWS ARE INSTALLED WITHOUT THREAD LOCKER
13. TOUCH THE IMPELLER TO INSURE THAT IT ROTATES FREELY.

B

D

E3

B

B

A

A

LAST SAVED IN SMARTTEAM 0/26/2010 1:02:29 PM

CRITICALITY SYMBOLS PER QPSP-001.2

LEVEL I LEVEL II LEVEL III

THIS DOCUMENT IS SOLELY THE PROPERTY OF PENTAIR WATER TREATMENT. REPRODUCTION, USE DISCLOSURE, OR TRANSMISSION OF THIS DOCUMENT OR DETAILS CONTAINED HEREIN, IN PART OR IN WHOLE, IS PROHIBITED WITHOUT THE WRITTEN CONSENT OF PENTAIR WATER TREATMENT ENGINEERING. THIS DOCUMENT AND ANY COPIES SHALL BE RETURNED TO PENTAIR WATER TREATMENT UPON WRITTEN REQUEST.

DO NOT SCALE DRAWING. DIMS. ARE IN INCHES [mm]
INTERPRET DIMS AND TOLERANCES PER ASME Y14.5M -1994 UNLESS OTHERWISE SPECIFIED:
TOLERANCES:
CORNER FILLETS R.005-.020 [.127- .508]
ANGLES: ± 1°
1 PLACE .X: ± .015 [0.38]
2 PLACE .XX: ± .01 [0.3]
3 PLACE .XXX: ± .005 [0.13]

THE COMPONENT, PART, OR ASSEMBLY DESCRIBED IN THIS DOCUMENT MUST COMPLY WITH THE EU (EUROPEAN UNION) DIRECTIVE: RoHS DIRECTIVE 2002/95/EC.
THIS DRAWING MUST BE COMPARED TO THE ERP SYSTEM TO ENSURE CORRECT REVISION LEVEL PRIOR TO USE.

THIRD ANGLE PROJECTION



Pentair Residential Filtration

APPROVALS	DATE
DRAWN	
CHECKED	
APPROVED	

TITLE METER ASSY, 3" INLN,BRS,PDL		
SIZE B	DWG NO. BR60608	REV G.
SCALE 1:1	SOLIDWORKS FORMAT	SHEET 3 OF 3

4

3

2

1