

ITEM NO.	QTY.	PART NO.	DESCRIPTION
1	1	BR16253	CAP, METER, 3900
2	1	61449	METER CAP GEAR ASSY
	1	BR17711	SEAL, LIP
	1	BR13832	RETAINER, SEAL
	1	BR15804	FRAME, GEAR
	1	BR40180	METER GEAR ASSY
	1	BR13825	GEAR ASSY, METER CHANGE LEVEL
	6	BR13510	GEAR, IDLER
	1	BR15312	PLATE, INTERMEDIATE, MACHINED
3	3	15707	O-RING, -236
4	1	16812	PLATE, METER, ANTI-SAIL
5	3	BR18595	SCREW, 6-32 X .375, RD. HD.
6	1	11982	O-RING, -016
7	6	12112	SCREW, SLOTTED HEX HEAD, #10 - 24 X .50
8	8	16386	NUT, HEX, JAM, 1/2-13, 18-8 S.S.
9	8	40118	SCREW, SOCKET HEAD CAP, 1/2-13X1.50, SS
10	1	BR16280	FLOW STRAIGHTENER
11	2	16328	ADAPTER, FLANGE, 3"
12	1	BR15381	PLUG, IMPELLER, 2" METER
13	1	16252	IMPELLER
14	1	16574	WASHER
15	1	16254	BODY, METER, 3900
16	1	16279	IMPELLER SHAFT
17	1	19530	CARDBOARD, INSERT METER
18	1	19524	CARDBOARD, INSERT BOTTOM PAD
19	2	19503	CARDBOARD, FLECK 6 PARTITN/LNG

ITEMS ## 17,18,19 ARE NOT SHOWN

**BR60608-01**  
**METER ASSY, 3" INLN,**  
**NPT, STD, BRS, PDL**

LAST SAVED IN SMARTTEAM: 06/29/2007 08:44

**CRITICALITY SYMBOLS PER QPSP-001.2**  
 LEVEL I    LEVEL II    LEVEL III

THIS DOCUMENT IS SOLELY THE PROPERTY OF PENTAIR WATER TREATMENT. REPRODUCTION, USE DISCLOSURE, OR TRANSMISSION OF THIS DOCUMENT OR DETAILS CONTAINED HEREIN, IN PART OR IN WHOLE, IS PROHIBITED WITHOUT THE WRITTEN CONSENT OF PENTAIR WATER TREATMENT ENGINEERING. THIS DOCUMENT AND ANY COPIES SHALL BE RETURNED TO PENTAIR WATER TREATMENT UPON WRITTEN REQUEST.

DO NOT SCALE DRAWING. DIMS. ARE IN INCHES [mm]  
 INTERPRET DIMS AND TOLERANCES PER ASME Y14.5M -1994  
 UNLESS OTHERWISE SPECIFIED:  
 CORNER FILLETS R.005-.020 [.127-.508]  
 TOLERANCES:  
 ANGLES: ± 1°  
 1 PLACE .X: ± .015 [0.38]  
 2 PLACE .XX: ± .01 [0.3]  
 3 PLACE .XXX: ± .005 [0.13]

REVISIONS					
ZONE	ECN	REV.	DESCRIPTION	DATE	APP'D
	12363	A	CREATED ON SOLIDWORKS	5-4-04	AB
	13578	B	NOTE 5E: "USE TOOL F1806 TO DEPRESS THE SPRING..." WAS "USE A SMALL SCREWDRIVER TO DEPRESS THE SPRING ..." "INSTALL THE BACK HALF OF THE CAP IN PLACE OVER THE SPRING FIRST, THEN THE HALF OF THE CAP WITH THE PIN LAST, UNTIL YOU HEAR IT SNAP." WAS "INSTALL THE CAP OVER THE SPRING UNTIL YOU HEAR IT SNAP."	3-15-05	AB
	16862	C	REVISED NOTES, UPDATED DESCRIPTIONS	02-08-07	AB
	17572	D	UPDATED ASSY USING MODIFIED SUB-ASSY 61449, UPDATED NOTES WITH CORRECT ITEM##	06-27-07	AB

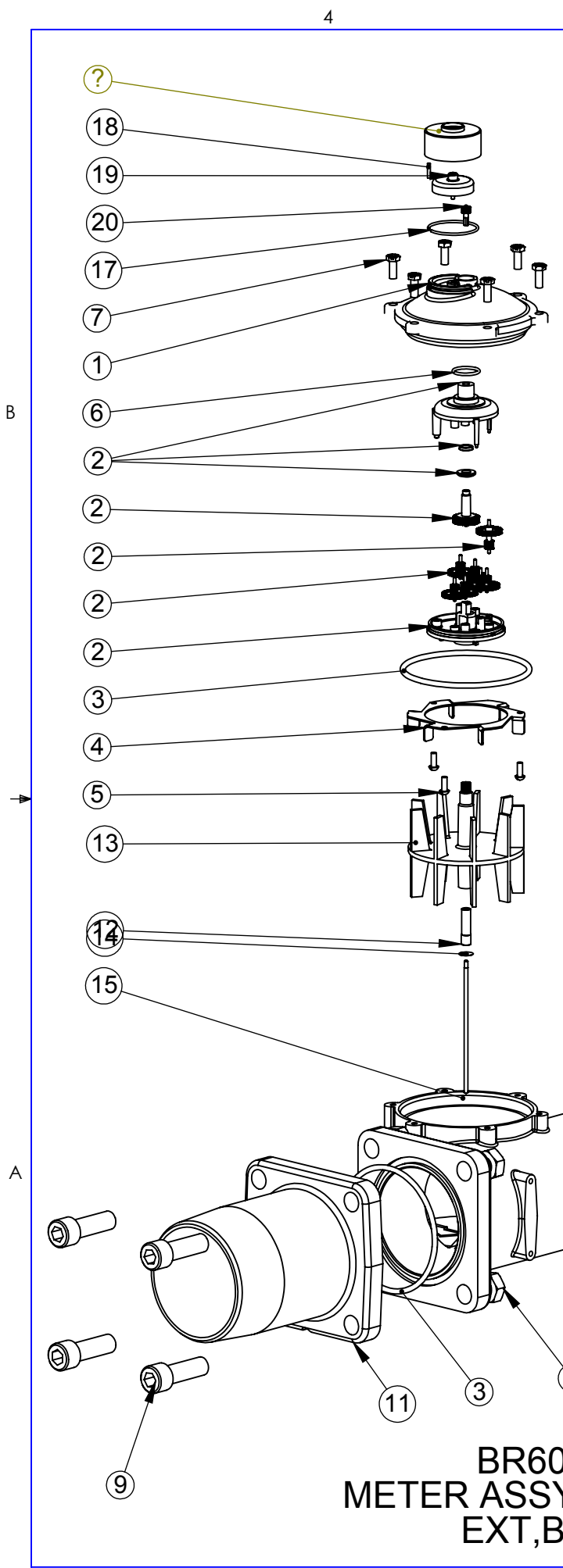
**BR60608-21**  
**METER ASSY, 3" INLN, BSP/MET, STD, BRS, PDL**

ITEM NO.	QTY.	PART NO.	DESCRIPTION
1	1	BR16253	CAP, METER, 3900
2	1	61449	METER CAP GEAR ASSY
	1	BR17711	SEAL, LIP
	1	BR13832	RETAINER, SEAL
	1	BR15804	FRAME, GEAR
	1	BR40180	METER GEAR ASSY
	1	BR13825	GEAR ASSY, METER CHANGE LEVEL
	6	BR13510	GEAR, IDLER
	1	BR15312	PLATE, INTERMEDIATE, MACHINED
3	3	15707	O-RING, -236
4	1	16812	PLATE, METER, ANTI-SAIL
5	3	BR18595	SCREW, 6-32 X .375, RD. HD.
6	1	11982-01	O-RING, -016, 560CD
7	6	15886	SCREW, HEX HD, M5 X 12 SS
8	8	16386	NUT, HEX, JAM, 1/2-13, 18-8 S.S.
9	8	40118	SCREW, SOCKET HEAD CAP, 1/2-13X1.50, SS
10	1	BR16280	FLOW STRAIGHTENER
11	2	16328-10	ADAPTER, FLANGE, 3" BSP
12	1	BR15381	PLUG, IMPELLER, 2" METER
13	1	16252	IMPELLER
14	1	16574	WASHER
15	1	16254-20	BODY, METER, 3900, METRIC
16	1	16279	IMPELLER SHAFT

THE COMPONENT, PART, OR ASSEMBLY DESCRIBED IN THIS DOCUMENT MUST COMPLY WITH THE FOLLOWING EU (EUROPEAN UNION) DEIRECTIVES: RoHS DIRECTIVE 2002/95/EC, WEE DIRECTIVE 2002/96/EC, AND ELV DIRECTIVE 2000/53/EC. THESE DIRECTIVES RESTRICT THE USE OF LEAD, CADMIUM, MERCURY, CHROMIUM, PBB, PBDE, AND OTHER HAZARDOUS MATERIALS. SEE THE TERMS AND CONDITIONS OF THE CONTRACT (PURCHASE ORDER) FOR MORE INFORMATION.

THIS DRAWING MUST BE COMPARED TO THE ERP SYSTEM TO ENSURE CORRECT REVISION LEVEL PRIOR TO USE.

THIRD ANGLE PROJECTION			Pentair Water Brookfield P.O. BOX 730 BROOKFIELD, WI 53008-0730	
APPROVALS	DATE		TITLE	
DRAWN	rsm	05/04/2004	SIZE	B
CHECKED	NAME	DATE	DWG NO.	BR60608
APPROVED	NAME	DATE	SCALE	1:4
			SOLIDWORKS FORMAT	SHEET 1 OF 3
			REV	D



ITEM NO.	QTY.	PART NO.	DESCRIPTION
1	1	BR16253	CAP, METER, 3900
2	1	61449	METER CAP GEAR ASSY
	1	BR17711	SEAL, LIP
	1	BR13832	RETAINER, SEAL
	1	BR15804	FRAME, GEAR
	1	BR40180	METER GEAR ASSY
	1	BR13825	GEAR ASSY, METER CHANGE LEVEL
	6	BR13510	GEAR, IDLER
	1	BR15312	PLATE, INTERMEDIATE, MACHINED
3	3	15707	O-RING, -236
4	1	16812	PLATE, METER, ANTI-SAIL
5	3	BR18595	SCREW, 6-32 X .375, RD. HD.
6	1	11982	O-RING, -016
7	6	12112	SCREW, SLOTTED HEX HEAD, #10 - 24 X .50
8	8	16386	NUT, HEX, JAM, 1/2-13, 18-8 S.S.
9	8	40118	SCREW, SOCKET HEAD CAP, 1/2-13X1.50, SS
10	1	BR16280	FLOW STRAIGHTENER
11	2	16328	ADAPTER, FLANGE, 3"
12	1	BR15381	PLUG, IMPELLER, 2" METER
13	1	16252	IMPELLER
14	1	16574	WASHER
15	1	16254	BODY, METER, 3900
16	1	16279	IMPELLER SHAFT
17	1	15878	SPRING, RETAINING
18	1	15889	PIN
19	1	BR14494	GEAR, OUTPUT
20	1	BR14495	GEAR, DRIVE PINION
21	1	BR15877	CAP, METER, EXT. RANGE
22	1	19530	CARDBOARD, INSERT METER
23	1	19524	CARDBOARD, INSERT BOTTOM PAD
24	2	19508	CARDBOARD, INSERT 3" REMOTE MET

ITEMS ## 22,23,24 ARE NOT SHOWN

**BR60608-02**  
**METER ASSY, 3" INLN, NPT ,**  
**EXT, BRS, PDL**

LAST SAVED IN SMARTTEAM: 06/29/2007 08:44

**CRITICALITY SYMBOLS PER QPSP-001.2**  
 LEVEL I    LEVEL II    LEVEL III

THIS DOCUMENT IS SOLELY THE PROPERTY OF PENTAIR WATER TREATMENT. REPRODUCTION, USE DISCLOSURE, OR TRANSMISSION OF THIS DOCUMENT OR DETAILS CONTAINED HEREIN, IN PART OR IN WHOLE, IS PROHIBITED WITHOUT THE WRITTEN CONSENT OF PENTAIR WATER TREATMENT ENGINEERING. THIS DOCUMENT AND ANY COPIES SHALL BE RETURNED TO PENTAIR WATER TREATMENT UPON WRITTEN REQUEST.

DO NOT SCALE DRAWING. DIMS. ARE IN INCHES [mm]  
 INTERPRET DIMS AND TOLERANCES PER ASME Y14.5M -1994  
 UNLESS OTHERWISE SPECIFIED:  
 CORNER FILLETS R.005-.020 [.127-.508]  
 TOLERANCES:  
 ANGLES: ± 1°  
 1 PLACE .X: ± .015 [0.38]  
 2 PLACE .XX: ± .01 [0.3]  
 3 PLACE .XXX: ± .005 [0.13]

REVISIONS					
ZONE	ECN	REV.	DESCRIPTION	DATE	APP'D
			SEE SHEET 1 FOR ALL REVISIONS		

**BR60608-22**  
**METER ASSY, 3" INLN, BSP MET , EXT, BRS, PDL**

ITEM NO.	QTY.	PART NO.	DESCRIPTION
1	1	BR16253	CAP, METER, 3900
2	1	61449	METER CAP GEAR ASSY
	1	BR17711	SEAL, LIP
	1	BR13832	RETAINER, SEAL
	1	BR15804	FRAME, GEAR
	1	BR40180	METER GEAR ASSY
	1	BR13825	GEAR ASSY, METER CHANGE LEVEL
	6	BR13510	GEAR, IDLER
	1	BR15312	PLATE, INTERMEDIATE, MACHINED
3	3	15707	O-RING, -236
4	1	16812	PLATE, METER, ANTI-SAIL
5	3	BR18595	SCREW, 6-32 X .375, RD. HD.
6	1	11982-01	O-RING, -016, 560CD
7	6	15886	SCREW, HEX HD, M5 X 12 SS
8	8	16386	NUT, HEX, JAM, 1/2-13, 18-8 S.S.
9	8	40118	SCREW, SOCKET HEAD CAP, 1/2-13X1.50, SS
10	1	BR16280	FLOW STRAIGHTENER
11	2	16328-10	ADAPTER, FLANGE, 3" BSP
12	1	BR15381	PLUG, IMPELLER, 2" METER
13	1	16252	IMPELLER
14	1	16574	WASHER
15	1	16254	BODY, METER, 3900
16	1	16279	IMPELLER SHAFT
17	1	15878	SPRING, RETAINING
18	1	15889	PIN
19	1	BR14494	GEAR, OUTPUT
20	1	BR14495	GEAR, DRIVE PINION
21	1	BR15877	CAP, METER, EXT. RANGE

THIS DRAWING MUST BE COMPARED TO THE ERP SYSTEM TO ENSURE CORRECT REVISION LEVEL PRIOR TO USE.

THIRD ANGLE PROJECTION

APPROVALS      DATE

DRAWN      rsm      05/04/2004

CHECKED      NAME      DATE

APPROVED      NAME      DATE

Pentair Water Brookfield  
 P.O. BOX 730  
 BROOKFIELD, WI 53008-0730

TITLE      **BR60608**

SIZE      **B**      DWG NO.      **BR60608**      REV      **D**

SCALE      1:4      SOLIDWORKS FORMAT      SHEET 2 OF 3