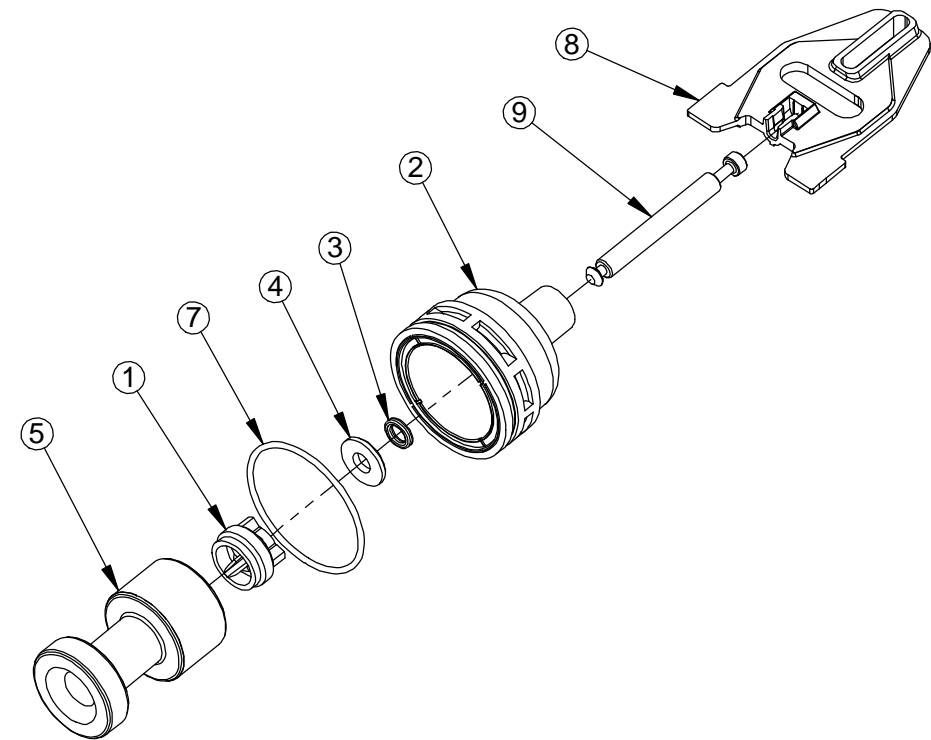


REVISIONS					
ZONE	ECN	REV.	DESCRIPTION	DATE	APP'D
	11439	B	RELEASE FOR PRODUCTION	09-26-03	PWS
	12084	C	C1 ADD P/N 16895, C2 ADD NOTE 4	03-01-04	PWS
	15759	D	UPDATE ASSEMBLY MODEL NO DESIGN/PART CHANGES	04/11/06	STM
	31182	E	1-RELEASE DRAWING, 2-WAS: BR40975, 3-WAS: (2) A-SIZED DWGS.	21SEP10	AB
	31409	F	1-ADD'D TORQUE TABLE , 2-REM'D NOTE-4	19OCT10	AB



ITEM NO.	BR61452-10 /QTY.	BR61452-20 /QTY.	PART NUMBER	DESCRIPTION
1	1	1	BR14309	RETAINER, PISTON ROD
2	-	1	BR40975-01	PLUG, END,STD,BLACK
	1	-	BR40975-02	PLUG, END, HIGH FLOW,GRAY
3	1	1	BR10209-01	QUAD RING, -010
4	1	1	BR13008	RETAINER, END PLUG SEAL
5	-	1	BR40545	PISTON, FILTER, 7000
6	1	-	BR40543	PISTON, DOWNFLOW,7000
7	1	1	BR40952	O-RING, -030
8	1	1	BR41032	LINK, PLASTIC
9	1	1	BR41039	ROD, PISTON
10	1	1	BR16895	BAG,POLY 7" X 8"
11	1	1	BR42371	PACKAGING,TUBE,PISTON, 2 1/2"
12	1	1	BR42371-C	CAP,PACKAGING, PISTON,2 1/2"

SCREW TORQUE TABLE			
ITEM NO.	PART NUMBER	DESCRIPTION	REQ'D TORQUE
1	BR14309	RETAINER,PISTON ROD	8 IN-LB ±10%

NOTES:  
 1. PARTS TO BE ASSEMBLED  
 2. ASSEMBLY TO BE INSERTED IN BAG P/N 16895  
 3. USE SERVICE ASSEMBLY ACCEPTANCE ID LABEL.

LAST SAVED IN SMARTEAM:11/10/2010 1:41:40 PM

CRITICALITY SYMBOLS PER QPSP-001.2  
 LEVEL I    LEVEL II    LEVEL III

THIS DOCUMENT IS SOLELY THE PROPERTY OF PENTAIR WATER TREATMENT. REPRODUCTION, USE DISCLOSURE, OR TRANSMISSION OF THIS DOCUMENT OR DETAILS CONTAINED HEREIN, IN PART OR IN WHOLE, IS PROHIBITED WITHOUT THE WRITTEN CONSENT OF PENTAIR WATER TREATMENT ENGINEERING. THIS DOCUMENT AND ANY COPIES SHALL BE RETURNED TO PENTAIR WATER TREATMENT UPON WRITTEN REQUEST.

DO NOT SCALE DRAWING. DIMS. ARE IN INCHES [mm]  
 INTERPRET DIMS AND TOLERANCES PER ASME Y14.5M -1994  
 UNLESS OTHERWISE SPECIFIED:  
 CORNER FILLETS R.005-.020 [.127-.508]  
 TOLERANCES:  
 ANGLES : ± 1°  
 1 PLACE .X: ± .015 [0.38]  
 2 PLACE .XX: ± .01 [0.3]  
 3 PLACE .XXX: ± .005 [0.13]

THE COMPONENT, PART, OR ASSEMBLY DESCRIBED IN THIS DOCUMENT MUST COMPLY WITH THE EU (EUROPEAN UNION) DIRECTIVE: RoHS DIRECTIVE 2002/95/EC.

THIS DRAWING MUST BE COMPARED TO THE ERP SYSTEM TO ENSURE CORRECT REVISION LEVEL PRIOR TO USE.

THIRD ANGLE PROJECTION

APPROVALS	DATE	<b>Pentair Residential Filtration</b>
DRAWN TJM	21SEP10	
CHECKED		
APPROVED		TITLE <b>PISTON ASSY, 7000,SFT-FLT 35GPM</b>
SCALE 1:1	DWG NO. <b>BR61452</b>	REV <b>F</b>
SOLIDWORKS FORMAT		SHEET 1 OF 1