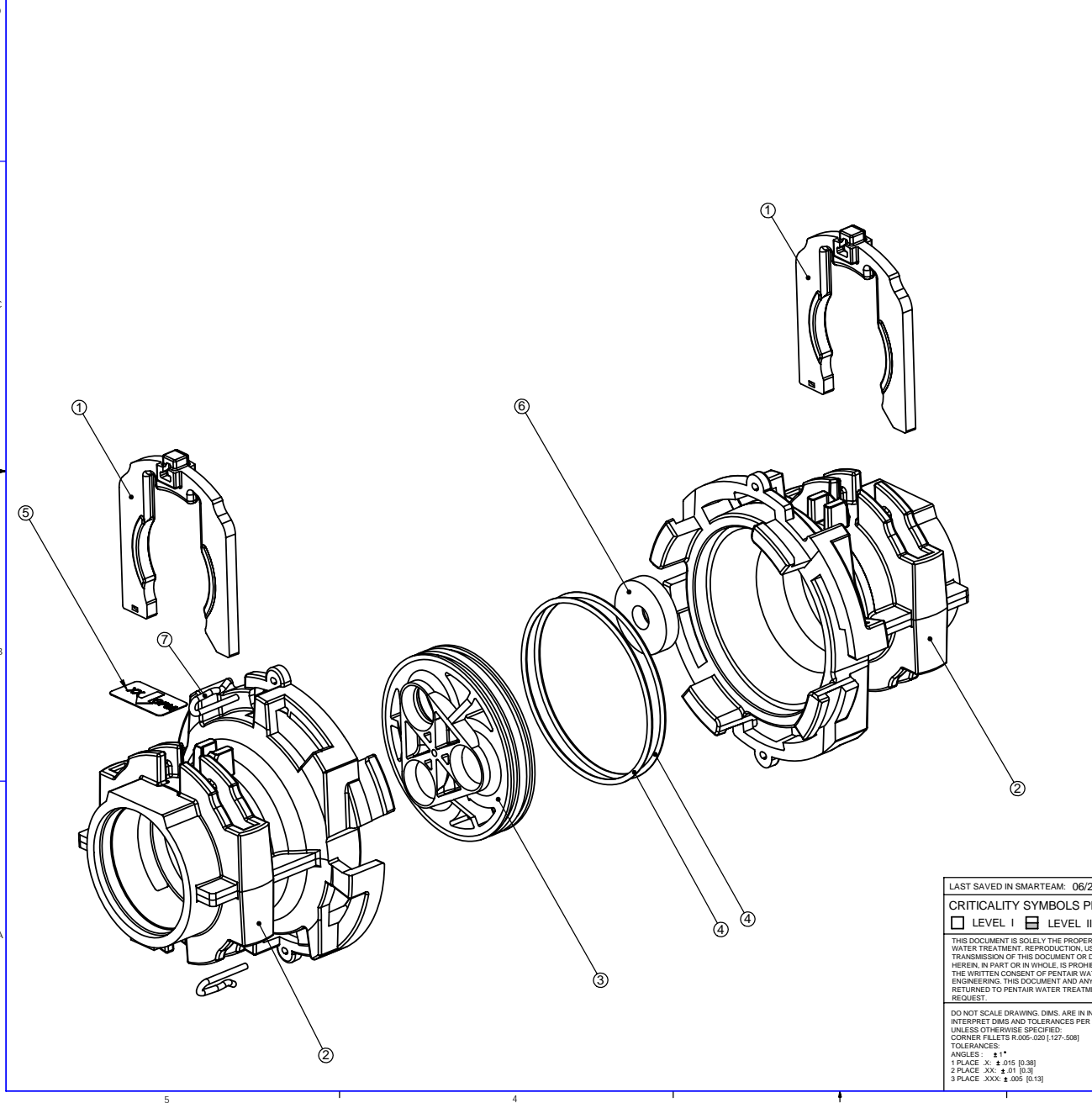


ITEM NO.	PART NUMBER	DESCRIPTION	QTY.
1	40576	CLIP, H. PLASTIC, 7000	2
2	BR42362	HOUSING, COMM DLFC	2
3	BR42363	RETAINER, COMM. DLFC	1
4	BR42364	O-RING, -036	2
5	BR42365	LABEL, COMM. DLFC	1
6	COMM FC WASHER	SPECIFY GPM	SEE CHART
7	BR10909	PIN, CONNECTING ROD SPRING	2

REVISIONS					
ZONE	ECN	REV.	DESCRIPTION	DATE	APP'D
	17500	A	PRE-PRODUCTION RELEASE AND PPAP 02625	5/25/07	KJG
	17640	B	RELEASE TO PRODUCTION	06/18/07	KJG



PART NO.	DESCRIPTION
BR42363	RETAINER W/ONE HOLE
BR42363-01	RETAINER W/TWO HOLES
BR42363-02	RETAINER W/THREE HOLES

ITEM NUMBER	PART NUMBER	DESCRIPTION	QUANTITY																
			BR61640-00	BR61640-000	BR61640-001	BR61640-10	BR61640-15	BR61640-20	BR61640-30	BR61640-40	BR61640-50	BR61640-55	BR61640-60	BR61640-70	BR61640-75				
1	BR10909	PIN, CONN ROD SPRING	2	2	2	2	2	2	2	2	2	2	2	2	2	2	2	2	2
2	BR40576	CLIP, H. PLASTIC 7000	2	2	2	2	2	2	2	2	2	2	2	2	2	2	2	2	2
3	BR42362	HOUSING, COMM DLFC	2	2	2	2	2	2	2	2	2	2	2	2	2	2	2	2	2
4	BR42363	RETAINER, COMM DLFC 1 HOLE	-	-	1	1	1	1	1	1	1	1	1	1	1	1	1	1	1
4	BR42363-01	RETAINER, COMM DLFC 2 HOLE	-	-	-	-	-	-	-	1	1	1	1	1	1	1	1	1	1
4	BR42363-02	RETAINER, COMM DLFC 3 HOLE	-	-	-	-	-	-	-	-	-	-	-	-	1	1	1	1	1
5	BR42364	O-RING, -036	2	2	2	2	2	2	2	2	2	2	2	2	2	2	2	2	2
6	BR42365	LABEL, COMM DLFC	1	1	1	1	1	1	1	1	1	1	1	1	1	1	1	1	1
7	BR16629	BUTTON, 10 GPM	-	-	-	1	-	-	-	-	-	-	-	-	-	-	-	-	-
7	BR16736	BUTTON, 15 GPM	-	-	-	-	1	-	-	2	1	-	-	-	1	-	-	-	-
7	BR16528	BUTTON, 20 GPM	-	-	-	-	-	1	-	-	1	2	1	-	2	3	-	1	-
7	BR16737	BUTTON, 25 GPM	-	-	-	-	-	-	1	-	-	1	2	-	-	2	2	2	2
8	BR42510	CARDBOARD	1	1	1	1	1	1	1	1	1	1	1	1	1	1	1	1	1

- ASSEMBLY INSTRUCTIONS NOTES:
- SEE WORK INSTRUCTIONS BR42513WI FOR PROPER ASSEMBLY.
  - O-RINGS SHOULD ALWAYS BE PREGREASED.
  - USE RUBBER BAND OR EQUIVALENT TO HOLD H CLIPS INPLACE.
  - USE PARTS BOARD METHOD TO INSURE NO COMPONENTS ARE MISSED.

LAST SAVED IN SMARTTEAM: 06/27/2007 11:07

CRITICALITY SYMBOLS PER QPSP-001.2  
 LEVEL I  LEVEL II  LEVEL III

THIS DOCUMENT IS SOLELY THE PROPERTY OF PENTAIR WATER TREATMENT. REPRODUCTION, USE, DISCLOSURE, OR TRANSMISSION OF THIS DOCUMENT OR DETAILS CONTAINED HEREIN, IN PART OR IN WHOLE, IS PROHIBITED WITHOUT THE WRITTEN CONSENT OF PENTAIR WATER TREATMENT ENGINEERING. THIS DOCUMENT AND ANY COPIES SHALL BE RETURNED TO PENTAIR WATER TREATMENT UPON WRITTEN REQUEST.

DO NOT SCALE DRAWING. DIMS. ARE IN INCHES (mm)  
 INTERPRET DIMS AND TOLERANCES PER ASME Y14.5M-1994  
 UNLESS OTHERWISE SPECIFIED:  
 CORNER FILLETS R.005-.020(127-508)  
 TOLERANCES:  
 ANGLES: ±1°  
 1 PLACE .XX ±.015 (0.38)  
 2 PLACE .XX ±.01 (0.25)  
 3 PLACE .XXX ±.005 (0.13)

THIS COMPONENT, PART, OR ASSEMBLY DESCRIBED IN THIS DOCUMENT MUST COMPLY WITH THE FOLLOWING EU (EUROPEAN UNION) DIRECTIVES: RHM DIRECTIVE 2002/96/EC, WEE DIRECTIVE 2002/95/EC, AND ELV DIRECTIVE 2002/95/EC. THESE DIRECTIVES RESTRICT THE USE OF LEAD, CADMIUM, MERCURY, CHROMIUM VI, PBB, AND OTHER HAZARDOUS MATERIALS. SEE THE TERMS AND CONDITIONS OF THE CONTRACT (PURCHASE ORDER) FOR MORE INFORMATION.

THIS DRAWING MUST BE COMPARED TO THE ERP SYSTEM TO ENSURE CORRECT REVISION LEVEL PRIOR TO USE.

THIRD ANGLE PROJECTION		Pentair Water Brookfield P.O. BOX 730 BROOKFIELD, WI 53008-0730	
APPROVALS	DATE	TITLE	
DRAWN kgu	05/25/2007	DLFC ASSY, 1 1/4"	
CHECKED	DATE	SIZE C	DWG NO. BR61640
APPROVED	DATE	SCALE 1:1	SOLIDWORKS FORMAT SHEET 1 OF 1