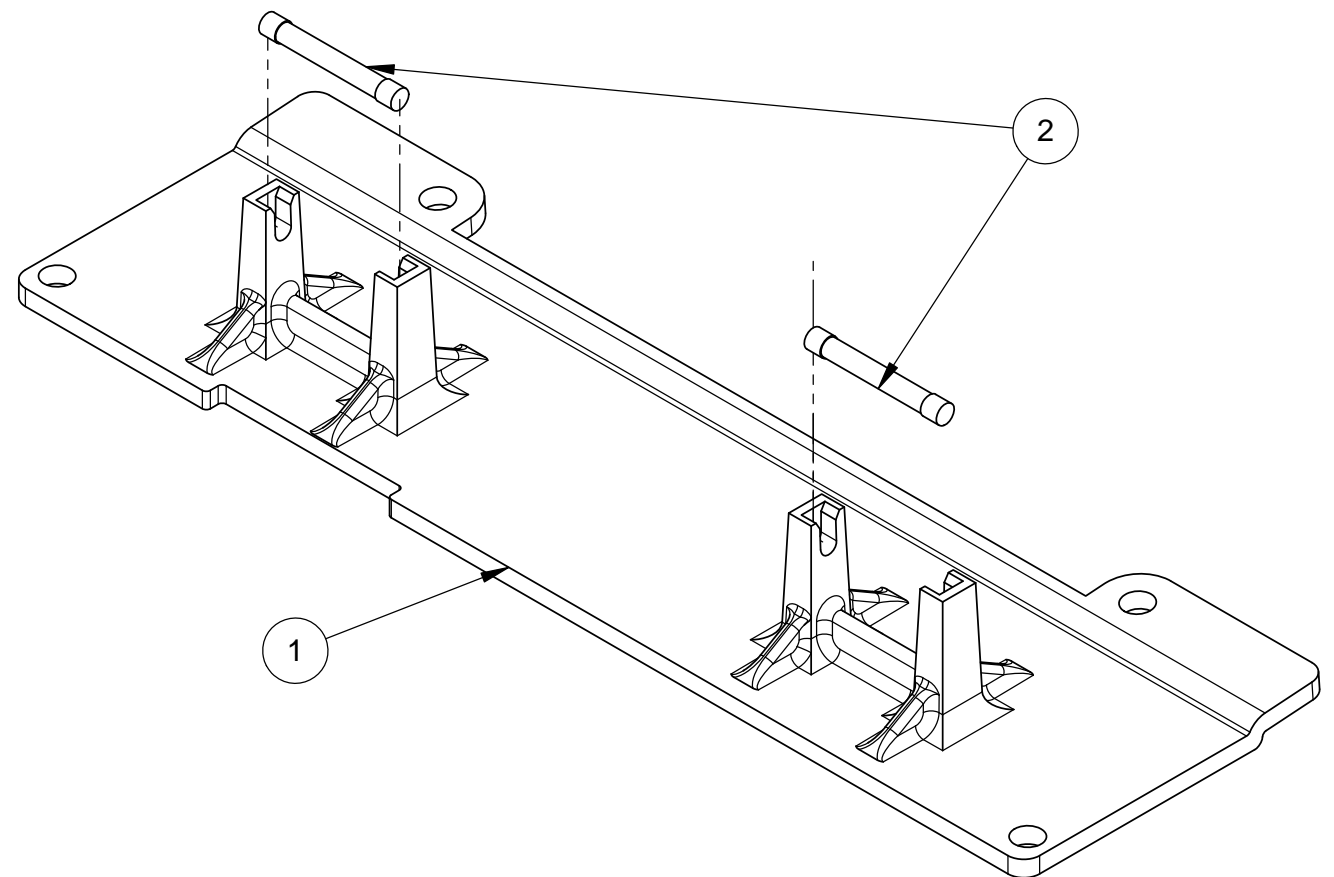
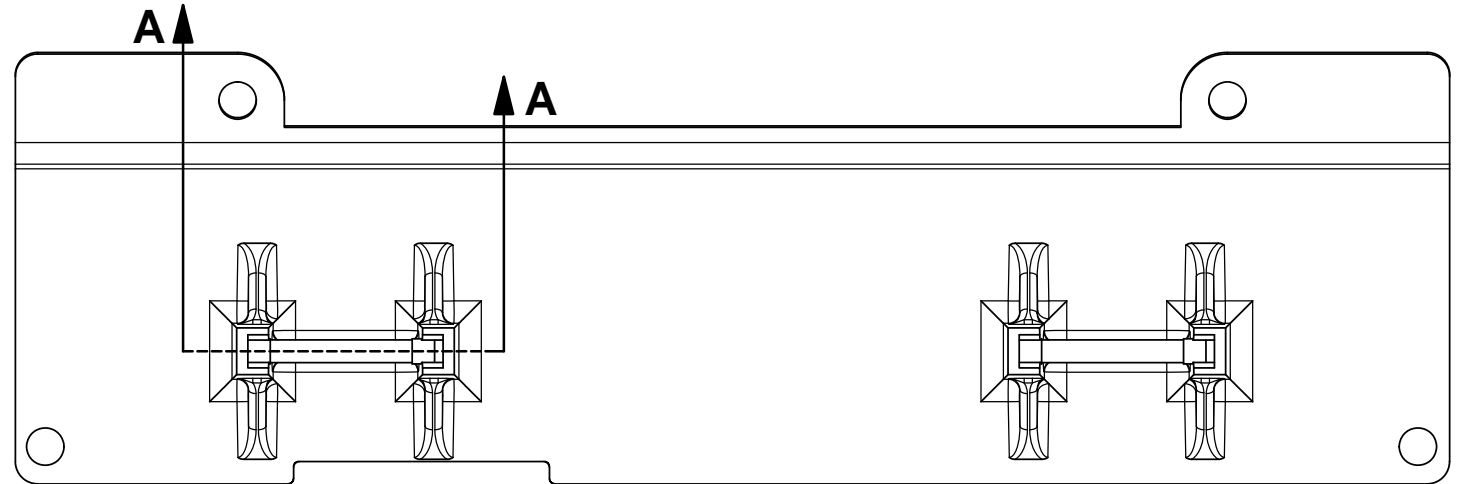
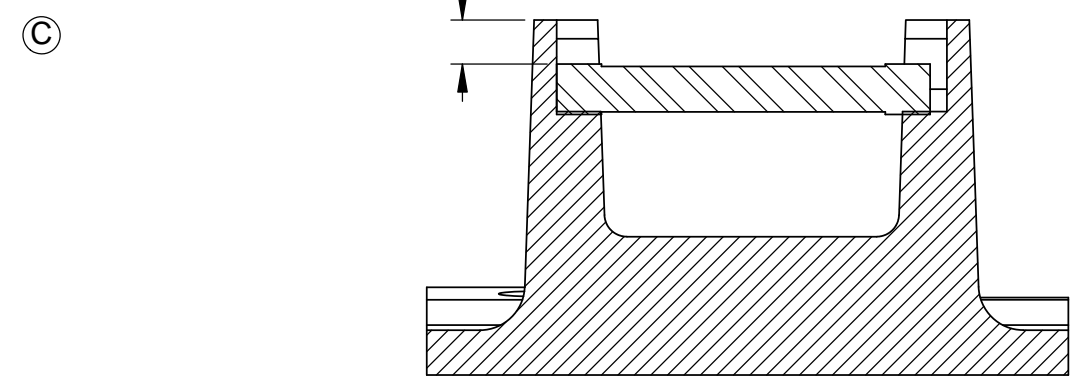


REVISIONS					
ZONE	ECN	REV.	DESCRIPTION	DATE	APP'D
	19439	A	RELEASE FOR PRE-PRODUCTION FOR PPAP-03976.	09/04/08	TLE
	19428	B	RELEASE FOR PRODUCTION.	08/27/09	TLE
	101413	C	PART TO PRINT INTEGRITY. (2X) .115 +.005/-.015 WAS (2X).115.	10 DEC 12	101413



□(2X),115<sup>+0,005</sup><sub>-,015</sub> [2,92<sup>+0,13</sup><sub>-0,38</sub>]



**SECTION A-A  
SCALE 2 : 1**

LAST SAVED IN SMARTEAM: 10/15/2009 08:55

**CRITICALITY SYMBOLS PER QPSP-001.2**  
 □ LEVEL I   ■ LEVEL II   ■ LEVEL III

THIS DOCUMENT IS SOLELY THE PROPERTY OF PENTAIR WATER TREATMENT. REPRODUCTION, USE DISCLOSURE, OR TRANSMISSION OF THIS DOCUMENT OR DETAILS CONTAINED HEREIN, IN PART OR IN WHOLE, IS PROHIBITED WITHOUT THE WRITTEN CONSENT OF PENTAIR WATER TREATMENT ENGINEERING. THIS DOCUMENT AND ANY COPIES SHALL BE RETURNED TO PENTAIR WATER TREATMENT UPON WRITTEN REQUEST.

DO NOT SCALE DRAWING. DIMS. ARE IN INCHES [mm]  
 INTERPRET DIMS AND TOLERANCES PER ASME Y14.5M -1994  
 UNLESS OTHERWISE SPECIFIED:  
 CORNER FILLETS R.005-.020 [.127-.508]  
 TOLERANCES:  
 ANGLES: ± 1°  
 1 PLACE .X: ± .015 [0.38]  
 2 PLACE .XX: ± .01 [0.3]  
 3 PLACE .XXX: ± .005 [0.13]

ITEM	PART NO	DESCRIPTION	QTY
1	BR17844	BRACKET, SUPPORT, 6700	1
2	BR18754	PIN, 6700	2

THE COMPONENT, PART, OR ASSEMBLY DESCRIBED IN THIS DOCUMENT MUST COMPLY WITH THE EU (EUROPEAN UNION) DIRECTIVE: RoHS DIRECTIVE 2002/95/EC.  
 THIS DRAWING MUST BE COMPARED TO THE ERP SYSTEM TO ENSURE CORRECT REVISION LEVEL PRIOR TO USE.

THIRD ANGLE PROJECTION

APPROVALS	DATE
DRAWN	
CHECKED	
APPROVED	

Pentair Residential Filtration

TITLE: BRACKET ASSY, SUPPORT,6700

SIZE: B   DWG NO.: BR61692   REV: C

SCALE: 1:1   SOLIDWORKS FORMAT   SHEET 1 OF 1