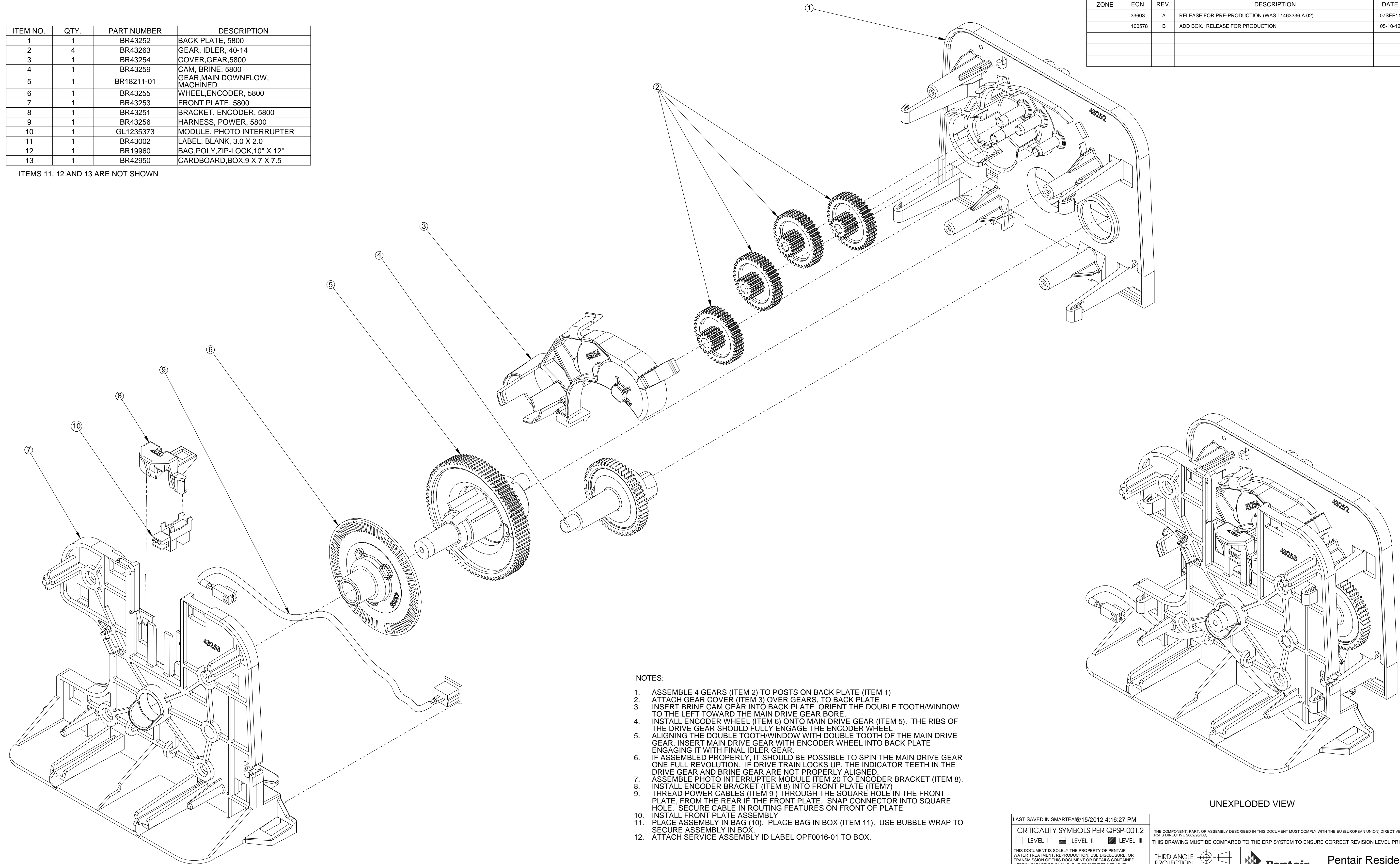


ITEM NO.	QTY.	PART NUMBER	DESCRIPTION
1	1	BR43252	BACK PLATE, 5800
2	4	BR43263	GEAR, IDLER, 40-14
3	1	BR43254	COVER, GEAR, 5800
4	1	BR43259	CAM, BRINE, 5800
5	1	BR18211-01	GEAR, MAIN DOWNFLOW, MACHINED
6	1	BR43255	WHEEL, ENCODER, 5800
7	1	BR43253	FRONT PLATE, 5800
8	1	BR43251	BRACKET, ENCODER, 5800
9	1	BR43256	HARNES, POWER, 5800
10	1	GL1235373	MODULE, PHOTO INTERRUPTER
11	1	BR43002	LABEL, BLANK, 3.0 X 2.0
12	1	BR19960	BAG, POLY, ZIP-LOCK, 10" X 12"
13	1	BR42950	CARDBOARD, BOX, 9 X 7 X 7.5

ITEMS 11, 12 AND 13 ARE NOT SHOWN

REVISIONS					
ZONE	ECN	REV.	DESCRIPTION	DATE	APP'D
	33603	A	RELEASE FOR PRE-PRODUCTION (WAS L1463336 A.02)	07SEP11	PWS
	100578	B	ADD BOX. RELEASE FOR PRODUCTION	05-10-12	PWS



NOTES:

- ASSEMBLE 4 GEARS (ITEM 2) TO POSTS ON BACK PLATE (ITEM 1)
- ATTACH GEAR COVER (ITEM 3) OVER GEARS, TO BACK PLATE
- INSERT BRINE CAM GEAR INTO BACK PLATE. ORIENT THE DOUBLE TOOTH/WINDOW TO THE LEFT TOWARD THE MAIN DRIVE GEAR BORE.
- INSTALL ENCODER WHEEL (ITEM 6) ONTO MAIN DRIVE GEAR (ITEM 5). THE RIBS OF THE DRIVE GEAR SHOULD FULLY ENGAGE THE ENCODER WHEEL.
- ALIGNING THE DOUBLE TOOTH/WINDOW WITH DOUBLE TOOTH OF THE MAIN DRIVE GEAR. INSERT MAIN DRIVE GEAR WITH ENCODER WHEEL INTO BACK PLATE ENGAGING IT WITH FINAL IDLER GEAR.
- IF ASSEMBLED PROPERLY, IT SHOULD BE POSSIBLE TO SPIN THE MAIN DRIVE GEAR ONE FULL REVOLUTION. IF DRIVE TRAIN LOCKS UP, THE INDICATOR TEETH IN THE DRIVE GEAR AND BRINE GEAR ARE NOT PROPERLY ALIGNED.
- ASSEMBLE PHOTO INTERRUPTER MODULE ITEM 20 TO ENCODER BRACKET (ITEM 8).
- INSTALL ENCODER BRACKET (ITEM 8) INTO FRONT PLATE (ITEM 7)
- THREAD POWER CABLES (ITEM 9) THROUGH THE SQUARE HOLE IN THE FRONT PLATE, FROM THE REAR IF THE FRONT PLATE. SNAP CONNECTOR INTO SQUARE HOLE. SECURE CABLE IN ROUTING FEATURES ON FRONT OF PLATE
- INSTALL FRONT PLATE ASSEMBLY
- PLACE ASSEMBLY IN BAG (10). PLACE BAG IN BOX (ITEM 11). USE BUBBLE WRAP TO SECURE ASSEMBLY IN BOX.
- ATTACH SERVICE ASSEMBLY ID LABEL OPF0016-01 TO BOX.

UNEXPLODED VIEW

LAST SAVED IN SMARTTEAM/15/2012 4:16:27 PM

CRITICALITY SYMBOLS PER QPSP-001.2
 LEVEL I LEVEL II LEVEL III

THIS DOCUMENT IS SOLELY THE PROPERTY OF PENTAIR WATER TREATMENT. REPRODUCTION, USE, DISCLOSURE, OR TRANSMISSION OF THIS DOCUMENT OR DETAILS CONTAINED HEREIN, IN PART OR IN WHOLE, IS PROHIBITED WITHOUT THE WRITTEN CONSENT OF PENTAIR WATER TREATMENT ENGINEERING. THIS DOCUMENT AND ANY COPIES SHALL BE RETURNED TO PENTAIR WATER TREATMENT UPON WRITTEN REQUEST.

DO NOT SCALE DRAWINGS. DIMS. ARE IN INCHES (mm) UNLESS OTHERWISE SPECIFIED.
 CORNER FILLETS R.005 (0.02) (127-508)
 TOLERANCES:
 ANGLES: ±1°
 1 PLACE X: ±.015 (0.38)
 2 PLACE XX: ±.01 (0.3)
 3 PLACE XXX: ±.005 (0.13)

THE COMPONENT, PART, OR ASSEMBLY DESCRIBED IN THIS DOCUMENT MUST COMPLY WITH THE EU (EUROPEAN UNION) DIRECTIVE: 2002/95/EC.
 THIS DRAWING MUST BE COMPARED TO THE ERP SYSTEM TO ENSURE CORRECT REVISION LEVEL PRIOR TO USE.

THIRD ANGLE PROJECTION	
APPROVALS	DATE
DRAWN ZAL	08-03-11
CHECKED	
APPROVED	

		Pentair Residential Filtration	
TITLE			
PANEL GEAR ASSY, 5800			
SIZE	D	DWG NO.	BR61836
SCALE	1:1	SOLIDWORKS FORMAT	SHEET 1 OF 1