

5

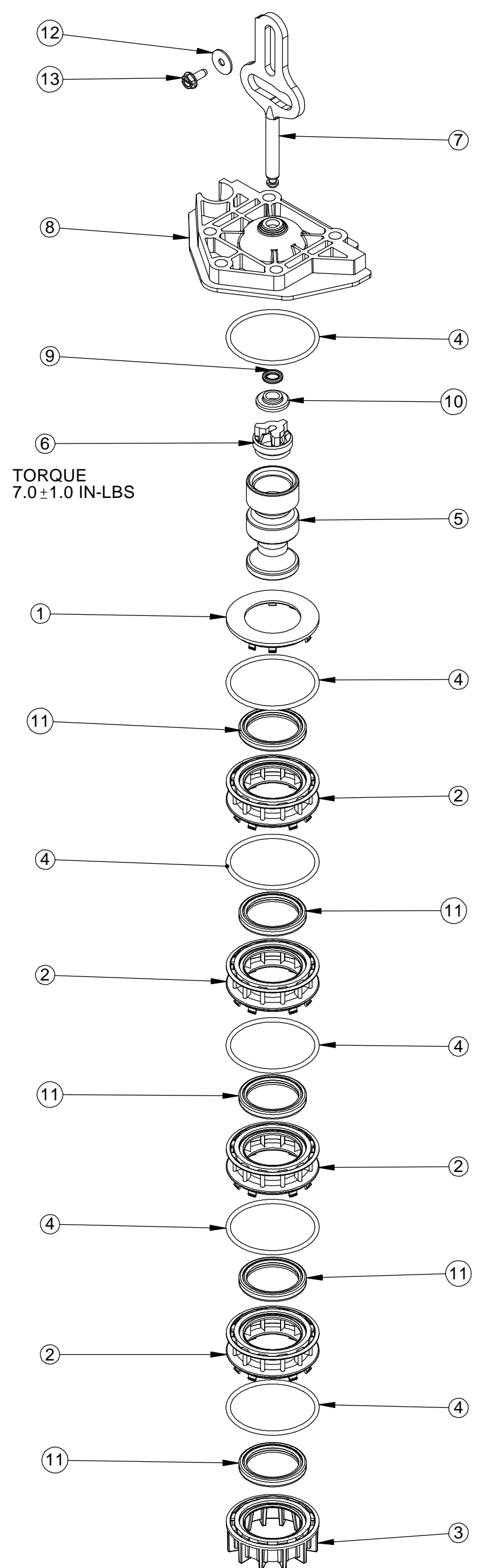
4

3

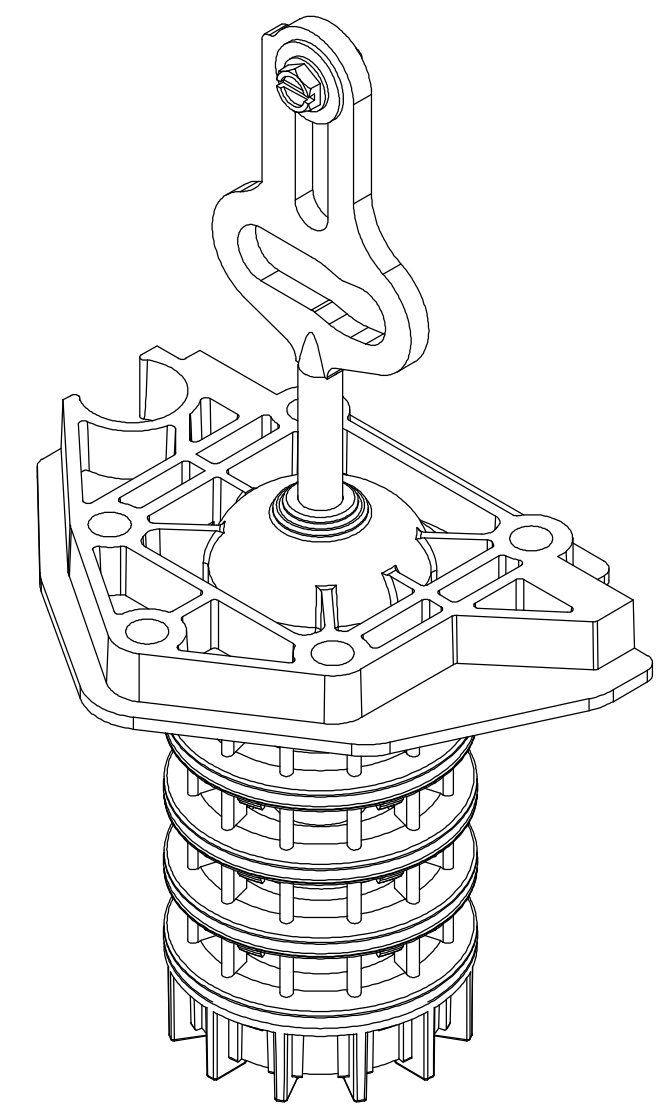
2

1

REVISIONS					
ZONE	ECN	REV.	DESCRIPTION	DATE	APPD
	33603	A	RELEASE FOR PRE-PRODUCTION (WAS L1463340-01 A.01)	07SEP11	PWS
	100578	B	REVISED PACKAGING AND NOTES. RELEASE FOR PRODUCTION	05-10-12	PWS



TORQUE
7.0±1.0 IN-LBS



UNEXPLODED VIEW
SCALE 1:1

ITEM NO.	QTY.	PART NUMBER	DESCRIPTION
1	1	BR43268	SPACER, TOP, 5800
2	4	BR43269	SPACER, 5800
3	1	BR43266	SPACER, BOTTOM, 5800
4	6	BR43270	O-RING, 40MM X 2MM
5	1	BR43301	PISTON, 5800, DOWNFLOW
6	1	BR14309	RETAINER, PISTON ROD
7	1	BR18267	ROD,PISTON
8	1	BR43267	PLUG, END, 5800
9	1	BR10209-01	QUAD RING, -.010
10	1	BR43271	RETAINER, PISTON ROD
11	5	BR10545	SEAL, PISTON
12	1	BR13363	WASHER,PLAIN,.145 ID SS
13	1	BR17020	SCREW,STL. HEX WSH,6-20X3/8,
14	1	BR43002	LABEL, BLANK, 3.0 X 2.0
15	1	BR16895	BAG,POLY 7" X 8"
16	1	BR1070644	CARDBOARD BOX, 6X4X4

ITEMS 14, 15 AND 16 ARE NOT SHOWN IN DRAWING

NOTES:

- GREASE PISTON SEALS (ITEM 11) AND O-RINGS (ITEM 4).
- ASSEMBLE SEAL AND SPACER ASSEMBLY. ENSURE THAT O-RINGS (ITEM 4) ARE NOT PINCHED BETWEEN SPACERS (ITEM 2).
- INSTALL ROD SEAL (ITEM 9) IN END PLUG (ITEM 8) AND SNAP IN SEAL RETAINER (ITEM 10)
- INSTALL ROD RETAINER (ITEM 6) INTO PISTON (ITEM 5). TORQUE TO BE 7.0±1.0 IN-LBS.
- GREASE PISTON LINK (ITEM 8), INSERT INTO END PLUG ASSEMBLY AND ATTACH PISTON ASSEMBLY.
- INSERT PISTON/END PLUG ASSEMBLY INTO SEAL AND SPACER ASSEMBLY
- STAPLE SCREW (ITEM 13) AND WASHER (ITEM 12) IN CORNER OF BAG (ITEM 15).
- PLACE ASSEMBLY IN BAGE (ITEM 15) AND PLACE BAGGED ASSEMBLY IN BOX (ITEM 17).
- PLACE LABEL (ITEM 14) ON BAG

LAST SAVED IN SMARTEAM6/15/2012 4:31:43 PM

CRITICALITY SYMBOLS PER QPSP-001.2
 LEVEL I LEVEL II LEVEL III

THIS DOCUMENT IS SOLELY THE PROPERTY OF PENTAIR WATER TREATMENT. REPRODUCTION, USE DISCLOSURE, OR TRANSMISSION OF THIS DOCUMENT OR DETAILS CONTAINED HEREIN, IN PART OR IN WHOLE, IS PROHIBITED WITHOUT THE WRITTEN CONSENT OF PENTAIR WATER TREATMENT ENGINEERING. THIS DOCUMENT AND ANY COPIES SHALL BE RETURNED TO PENTAIR WATER TREATMENT UPON WRITTEN REQUEST.

DO NOT SCALE DRAWING. DIMS. ARE IN INCHES [mm]
 INTERPRET DIMS AND TOLERANCES PER ASME Y14.5M-1994 UNLESS OTHERWISE SPECIFIED.
 CORNER FILLETS R.005-020 [127-508]
 TOLERANCES:
 ANGLES: ± 1°
 1 PLACE .X: ± .015 [0.38]
 2 PLACE .XX: ± .01 [0.3]
 3 PLACE .XXX: ± .005 [0.13]

THE COMPONENT, PART, OR ASSEMBLY DESCRIBED IN THIS DOCUMENT MUST COMPLY WITH THE EU (EUROPEAN UNION) DIRECTIVES: ROHS DIRECTIVE 2002/95/EC
 THIS DRAWING MUST BE COMPARED TO THE ERP SYSTEM TO ENSURE CORRECT REVISION LEVEL PRIOR TO USE.

THIRD ANGLE PROJECTION	
APPROVALS	DATE
DRAWN ZAL	08-15-11
CHECKED	
APPROVED	

Pentair Water Pentair Residential Filtration

TITLE
PISTON ASSY, DOWNFLOW, 5800

SIZE **C** DWG NO. **BR61837** REV **B**

SCALE 1:2 SOLIDWORKS FORMAT SHEET 1 OF 1