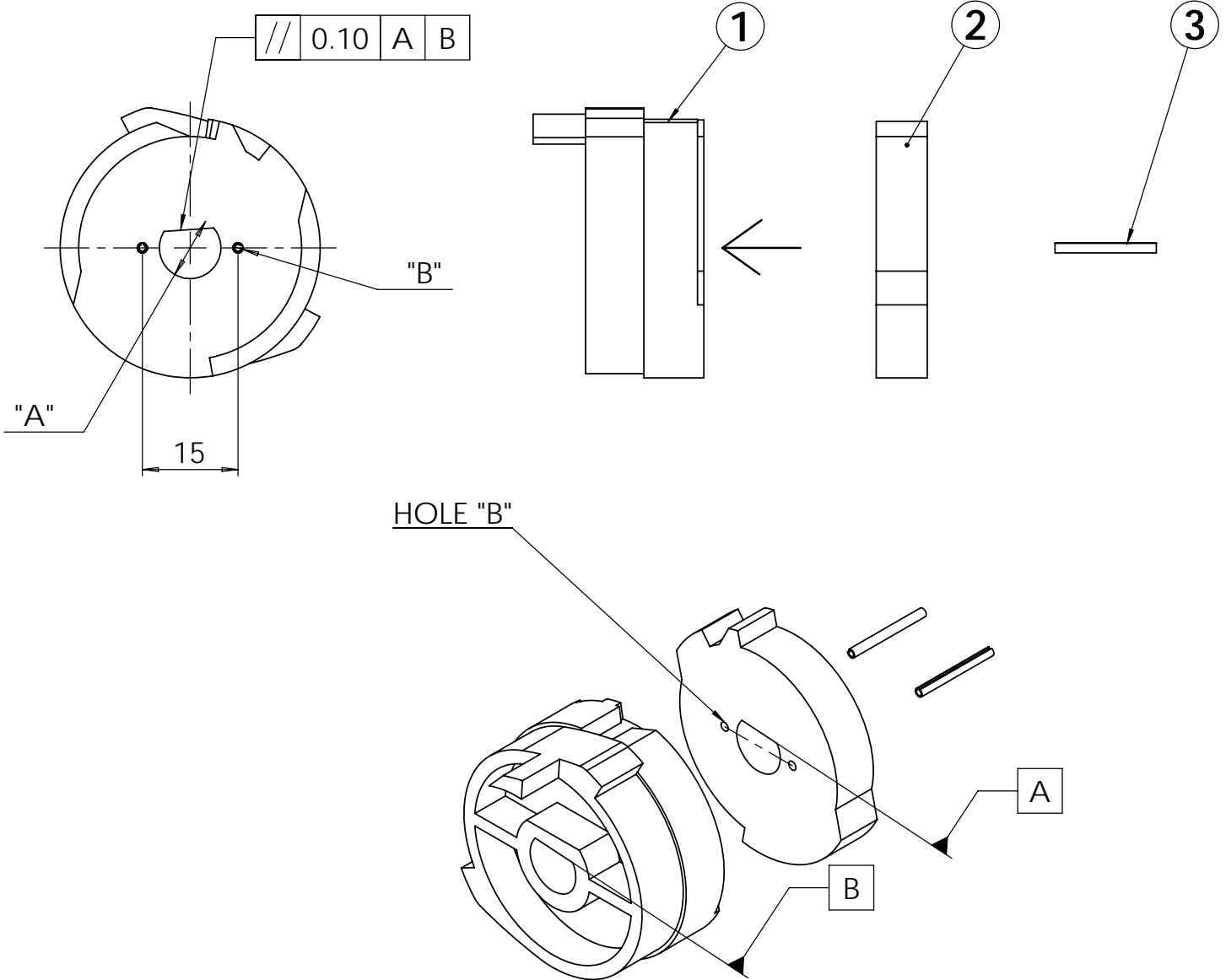


REVISIONS				
ECN	Rev.	Description	Date (dd/mm/yy)	Approved
4756	A	CREATED ON SOLIDWORKS	28/05/08	LD
4939	B	ADDED 24839 ON NOTES	11/03/09	LD
	C	ADDED 15943	5/03/10	CHT

EN ATTENTE F5338 ; sera remplacé par BR43091



THE BU28630 IS STICKED ON THE BU28630 WITH THE GLUE 24839  
 THE HOLE "A" OF THE TWO PARTS MUST BE PERFECTLY ALIGNED  
 THE PINS 15493 MUST BE INSERT ON 2 HOLES (B) DRILLED AFTER DRYING



ITEM	PN	DESCRIPTION	QTY
1	BU28631	TRIPLE CAM, MACHINED	1
2	BU28630	SEGMENT FOR TRIPLE CAM	1
3	15493	SPRING PIN	2



TRIPLE CAM, SPECIAL 9000/9100 UF

**BU15132-01**  
 CHAP. 28