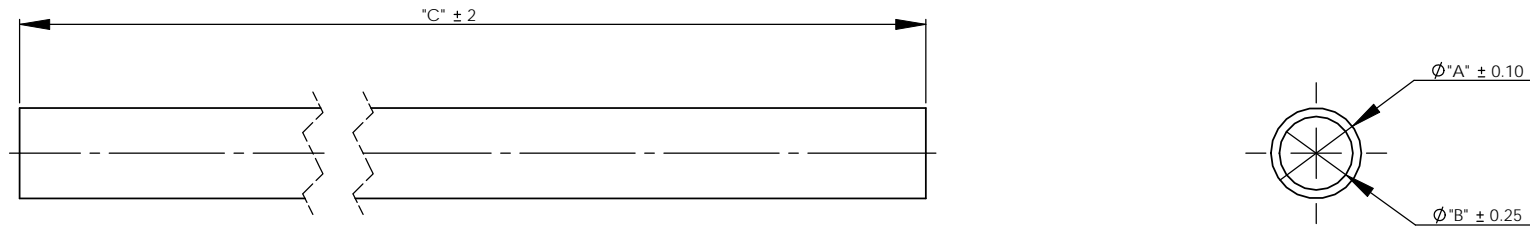


REVISIONS				
ECN	Rev.	Description	Date (dd/mm/yy)	Approved
	K	CREATED ON SOLIDWORKS	14/01/09	LD
	L	Added 26144 and for 28362-01 254 was 245	26/03/09	LD
F4985	M	Added BU28698 (359mm)	11/05/2009	MP/LD
F5037	N	27922 : 452 was 457 ; 28362-01 : 249 was 254	27/07/2009	LD
	P	26362-01 : 254 was 249	23/02/2010	CHT
	Q	26362-01 : 253 was 254	05/02/2010	CHT
F5412	R	21148-02 / 21873 ... OBSOLETE	27/10/2011	MAN



PIPE	PN	DESCRIPTION	MATERIAL	COLOR	ASPECT	OD $\phi A^*$	ID $\phi B^*$	LENGHT DIM. "C"
3/8"	18317	TUBE 3/8", 1m25	ER120/0000/AB	Cool gray 3C	BRIGHT	9.5	7.3	1250
	10160	TUBE 3/8", 920 mm	ER120/0000/AB	Cool gray 3C	BRIGHT	9.5	7.3	920
	23294	TUBE 3/8", 740 mm	ER120/0000/AB	Cool gray 3C	BRIGHT	9.5	7.3	740
	26144	TUBE 3/8", 490 mm	ER120/0000/AB	Cool gray 3C	BRIGHT	9.5	7.3	490
3/4"	21873	** OBSOLETE ** DISTRIBUTOR TUBE 3/4", 1m47	ER120/0000/AB	Cool gray 3C	BRIGHT	20.7	18.0	1470
	BU27922	DISTRIBUTOR TUBE BWT 3/4", 452 mm	ER120/0000/AB	Cool gray 3C	BRIGHT	20.7	18.0	452
	BU28661	DISTRIBUTOR TUBE 3/4", 385 mm	ER120/0000/AB	Cool gray 3C	BRIGHT	20.7	18.0	385
	28362-01	DISTRIBUTOR TUBE BWT 3/4", 253 mm	ER120/0000/AB	Cool gray 3C	BRIGHT	20.7	18.0	253
1"	BU28698	DISTRIBUTOR TUBE BWT 3/4", 359 mm	ER20/0000/AB	Cool Gray 3C	BRIGHT	20.7	18.0	359
	21874	DISTRIBUTOR TUBE 1", 1m85	ER120/0000/AB	Cool gray 3C	BRIGHT	26.90	24.50	1850
	BU28648	DISTRIBUTOR TUBE 1", 1m85, ACS	EB506/0000/AA	430 U	MATT	26.90	24.50	1850
	27826	DISTRIBUTOR TUBE 1", 1m06	ER120/0000/AB	Cool gray 3C	BRIGHT	26.90	24.50	1060
	BU28650	DISTRIBUTOR TUBE 1", 1m06, ACS	EB506/0000/AA	430 U	MATT	26.90	24.50	1060
	BU28660	DISTRIBUTOR TUBE 1", 347 mm	ER120/0000/AB	Cool gray 3C	BRIGHT	26.90	24.50	347
2"	27123	DISTRIBUTOR TUBE 1", 337 mm	ER120/0000/AB	Cool gray 3C	BRIGHT	26.90	24.50	337
	21148-02	** OBSOLETE ** DISTRIBUTOR TUBE 2", 2m00	ER120/0000/AB	Cool gray 3C	BRIGHT	50.00	46.00	2000
	BU28649-02	DISTRIBUTOR TUBE 2", 2m00, ACS	EB506/0000/AA	430 U	MATT	50.00	46.00	2000
	21148-01	DISTRIBUTOR TUBE 2", 1m665	ER120/0000/AB	Cool gray 3C	BRIGHT	50.00	46.00	1665
	21148-HW	DISTRIBUTOR TUBE 2", 1m665, HW	CPVC			50.00	46.00	1665
BU28649	DISTRIBUTOR TUBE 2", 1m665, ACS	EB506/0000/AA	430 U	MATT	50.00	46.00	1665	

- △
- R
- N
- L
- M
- R

ROHS NOTES:  
 THE COMPONENT, PART, OR ASSEMBLY DESCRIBED IN THIS DOCUMENT MUST COMPLY WITH THE FOLLOWING EU (EUROPEAN UNION) DIRECTIVES:  
 ROHS DIRECTIVE 2002/95/EC, WEE DIRECTIVE 2002/96/EC, AND ELV DIRECTIVE 2000/53/EC. THESE DIRECTIVES RESTRICT THE USE OF LEAD, CADMIUM, MERCURY, CHROMIUM, PBB, PBDE, AND OTHER HAZARDOUS MATERIALS. SEE THE TERMS AND CONDITIONS OF THE CONTRACT (PURCHASE ORDER) FOR MORE INFORMATION.

All drawings and specifications as well as processes, materials, compounds and other similar criteria are to be strictly adhered to. No modifications allowed without prior written approval.

THIRD ANGLE PROJECTION

Material SEE TABLE

TOLERANCES (UNLESS OTHERWISE SPECIFIED):  
 25 ±0.4 mm  
 25.0 ±0.25 mm  
 25.00 ±0.10 mm  
 ANGULAR ±°  
 3.2  
 Break all exposed sharp corners 0.25 x 45° max.

DO NOT SCALE DRAWING DIMENSIONS = MM [inch]

THIRDS WATER

Pentair Water France  
 14, Av Rolland Garros  
 78532 Buc cedex  
 France

TUBES LIST

Drawn	Date (dd/mm/yy)	Scale	Filename	Weight (kg)	Sheet
CHT	14/01/09	2:1	BU28667	X	1 of 1
Approved	Date (dd/mm/yy)	Size	Part #	Dwg #	
LD	14/01/09	A3	BU28667		BU28667

This drawing is the absolute property of Pentair Water France. It may not be reproduced in any form without the written permission of Pentair Water France.