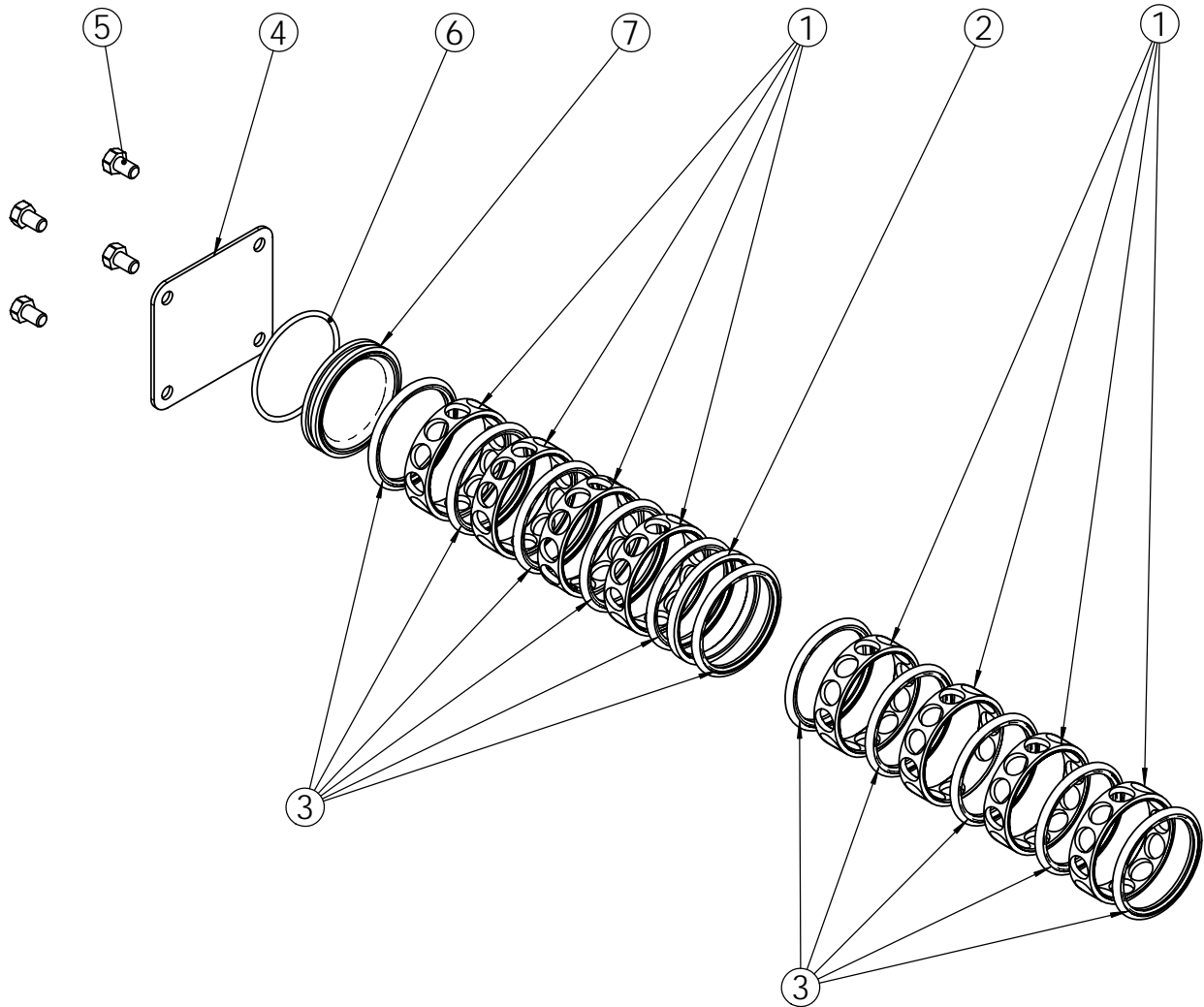


REVISIONS				
ECN	Rev.	Description	Date (dd/mm/yy)	Approved
F4961	A	CREATION	6/04/09	LD/MP



USED ON 9500 DOWN FLOW ONLY

ITEM	QTY	PART NO.	DESCRIPTION	NOM
1	8	BU28690	Spacer 2850/9500 Standard & Hot Water (Europe)	Entretoise 2850/9500 STD & HW (Europe)
2	1	BR17092	SPACER,DISC,9500	ENTRETOISE 9500
3	11	BU16101	SEAL 2850	JOINT
4	1	14906	PLATE,END,9000	PLAQUE
5	4	24874	SCREW HEX. M5x8	VIS TH M5x8
6	1	BR16394-01	O-RING, -029, 560CD	JOINT
7	1	BR16955	PLUG,END,9500	BOUCHON, 9500



KIT, SEAL & SPACER, LOWER 9500 DF (SPARE PART ONLY)

BU28693
CHAP. 21