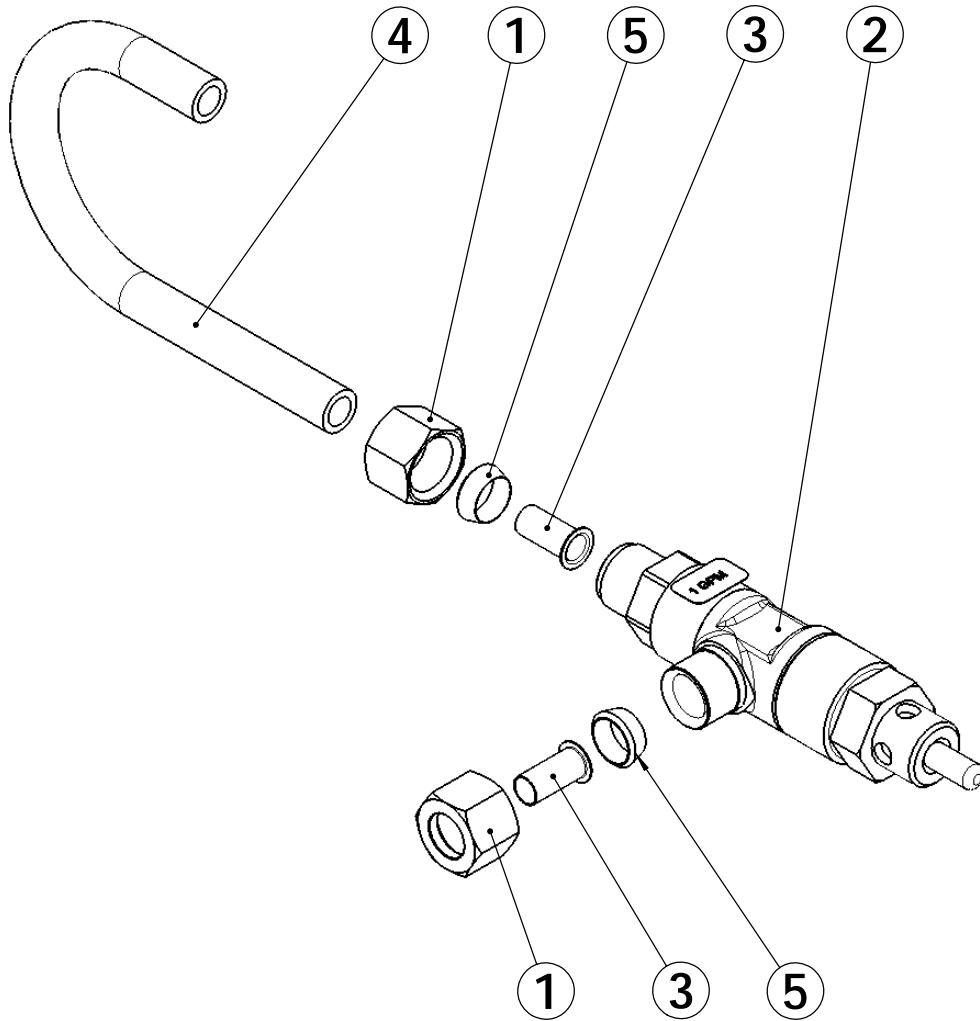


REVISIONS				
ECN	Rev.	Description	Date (dd/mm/yy)	Approved
F5030	A	CREATION	18/07/09	MAN/LD



# PACKED TOGETHER

ITEM	PART NUMBER	DESCRIPTION	QTE
1	10329	3/8" NUT	2
2	18092-1	1600 BV AND DLFC, 1.00 GPM	1
3	BR10332	FITTING, INSERT, 3/8	2
4	BR12774	TUBE, BRINE VALVE	1
5	BU10330	SLEEVE (3/8" TUBE)	2



Brine Valve 1600 Assy 2750/2900/2910 - 1 gpm for GRUNBECK

**BU28710**