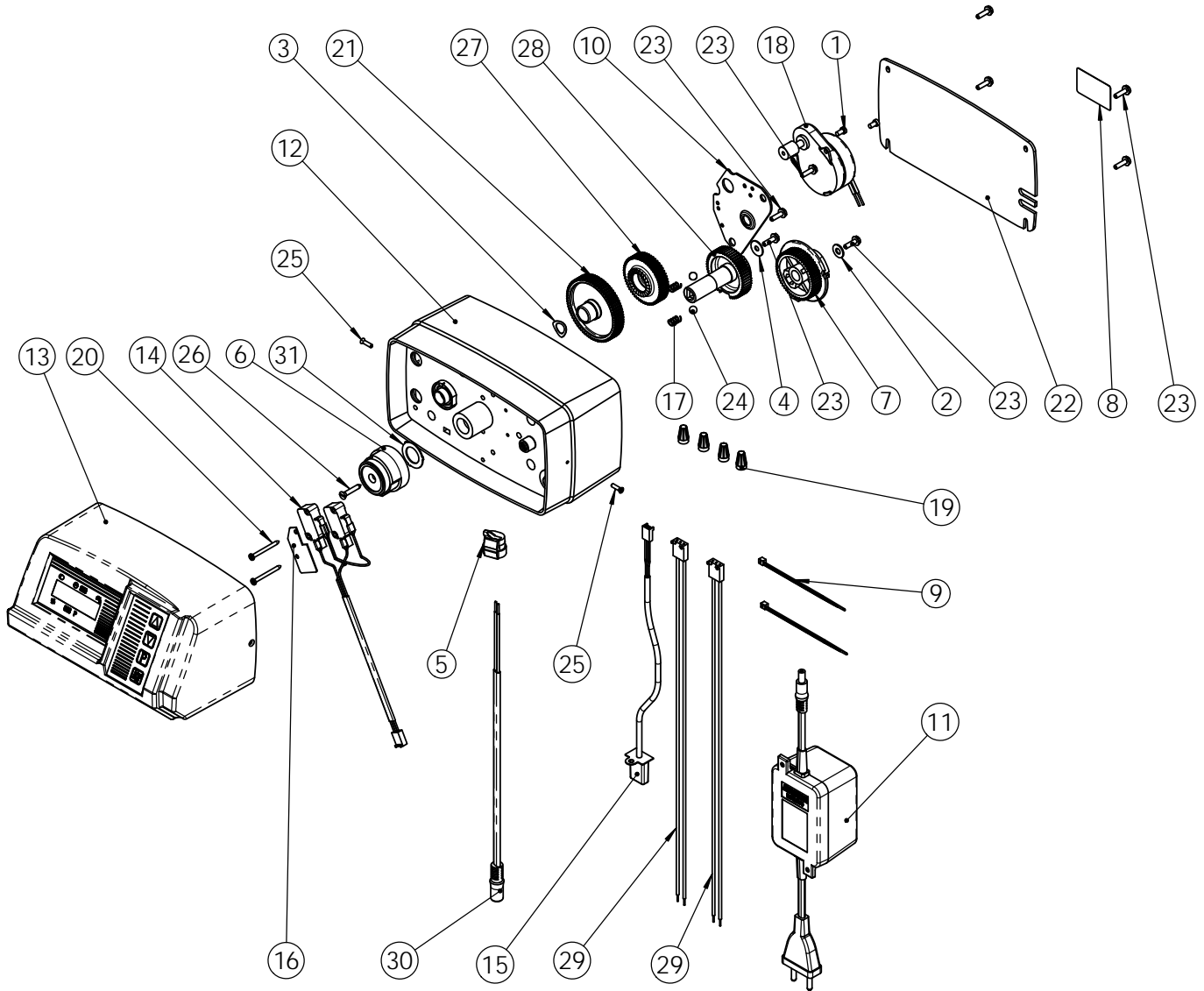


REVISIONS				
ECN	Rev.	Description	Date (dd/mm/yy)	Approved
	A	Was 27947	21/11/11	CHT
F5465	B	BR19121-01 was 28114-01	29/03/2012	MAN



ITEM	PN	QTY	DESCRIPTION
1	11384	2	SCREW
2	12037	1	WASHER
3	13299	1	WASHER
4	23250	1	WASHER INOX LN 4
5	13547	1	STRAIN RELIEF
6	BR17438	1	CAM, DOWNFLOW, BLACK
7	18722	1	CAM BRINE VALVE 6600/6700
8	21271	1	SERIAL NUMBER LABEL
9	21759	2	TIE RAP
10	23341	1	PLATE MOTOR MOUNTING
11	25651	1	24v, STANDARD TRANSFORMER
12	28381-02	1	DRIVE HOUSING 5600 SE ASSY
13	27944	1	COVER & MICRO-P BOARD 24v SYS ASSY 6600/6665
14	28021	1	WIRE HARNESS HOME & STEP & MICROSWITCH FOR 6600 DF
15	BR19121-01	1	METER CABLE ASSEMBLY
16	BR14087	1	INSULATOR
17	BR14457	2	SPRING, DETENT
18	16944	1	MOTOR, 24V - 60Hz, 2 RPM
19	BU28777	4	Wire Nut Tan
20	BU11413	2	SCREW 2.9x32
21	BU13017	1	IDLER GEAR
22	BU13229-02	1	BACK COVER - Black
23	BU13296	8	SCREW #6-20 * 0.50 long
24	BU13300	2	BALL 1/4"
25	BU13898	2	SCREW 4-24
26	BU15151	1	SCREW
27	BU23045	1	DRIVE GEAR
28	BR42933	1	GEAR, DRIVE, DOWNFLOW, 6700
29	BU28112	1	WIRE HARNESS POWER 24V
30	BU28552	1	TRANSFORMER WIRE HARNESS
31	BR19079	1	WASHER, FRICTION



POWER HEAD 6600 DOWN FLOW ASSY ECO

PH6600-001