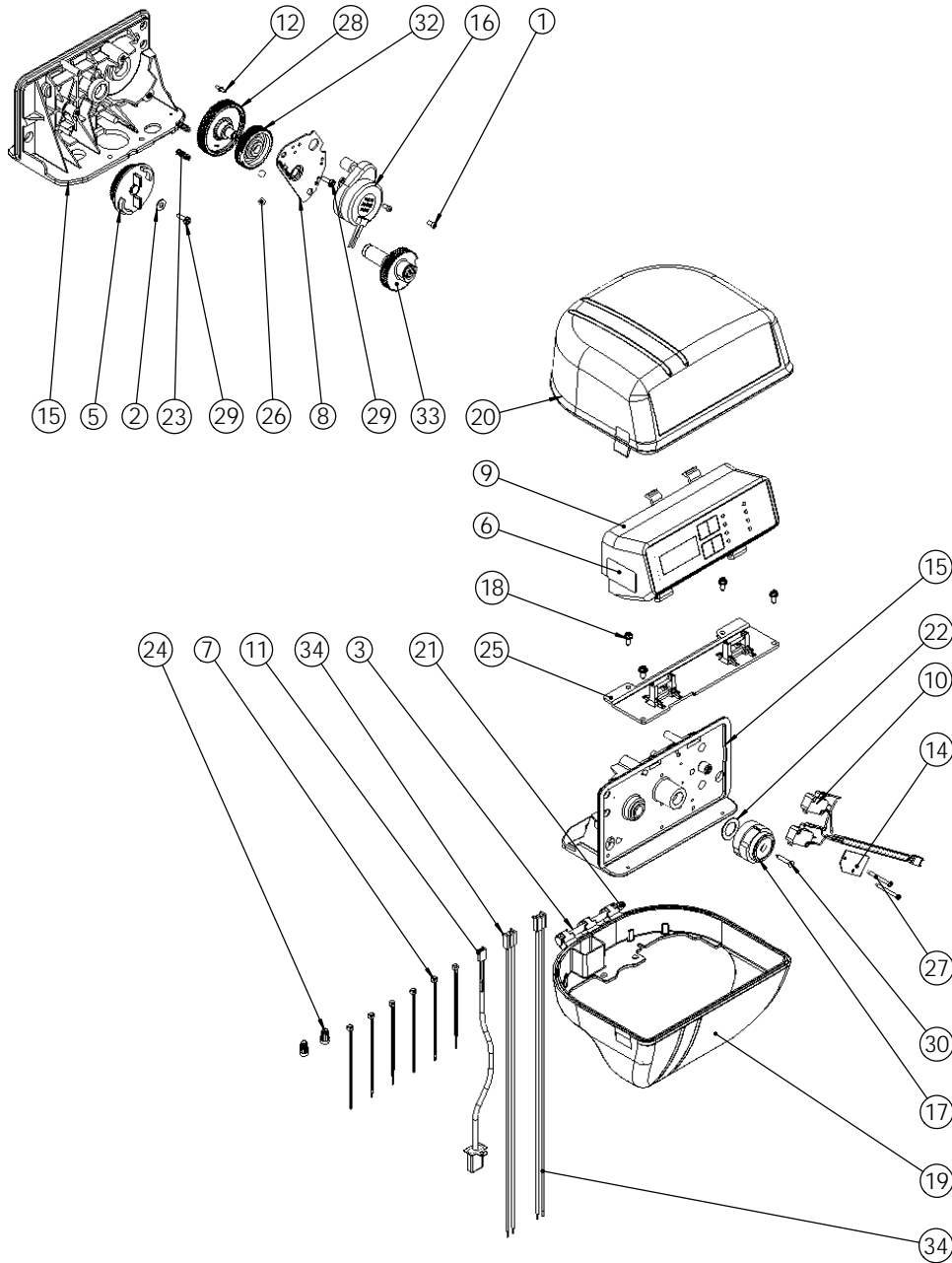


BR13547, BU28597 & BU18615 NOT SHOWN



ITEM	PART NUMBER	QTY	DESCRIPTION
1	11384	2	SCREW
2	12037	1	WASHER
3	17845	1	HINGE PIN FOR 6700 VERSION
4	BU28597	1	Kit Transformer 10VA (400mA)
5	18722	1	CAM BRINE VALVE 6600/6700
6	21271	1	SERIAL NUMBER LABEL
7	21759	6	TIE RAP
8	23341	1	PLATE MOTOR MOUNTING
9	26220	1	FRONT PANEL ASSY ELECTRONIC 6700 DF 24V
10	28021	1	WIRE HARNESS HOME & STEP & MICROSWITCH FOR 6600 DF
11	BR19121-01	1	METER CABLE ASSEMBLY
12	28202	1	MOTOR PIN
13	BR13547-03	1	STRAIN RELIEF, ROUND CORD
14	BR10302	1	INSULATOR, LIMIT SWITCH
15	BR14193	1	
16	16944	1	MOTOR, 24V - 60Hz, 2 RPM
17	BR17438	1	CAM, DOWNFLOW, BLACK
18	BR17798	4	SCREW, HEX WASHER HEAD, #8-16 X .38
19	BR17841-020	1	BR17841-020
20	BR17842	1	COVER, TOP 6700
21	BR18679	1	TAPERED CAP
22	BR19079	1	WASHER, FRICTION
23	BR19080	2	SPRING, COMPRESSION
24	BR40422	2	WIRE NUT
25	BR61692	1	Bracket Assy, Support, 6700
26	BU13300	2	BALL 1/4"
27	BU11413	2	SCREW 2.9x32
28	BU13017	1	IDLER GEAR
29	BU13296	3	SCREW #6-20 * 0.50 long
30	BU15151	1	SCREW
31	BU18615	1	SEAL, Ø 3,4 mm
32	BU23045	1	DRIVE GEAR
33	BU25005	1	MAIN DRIVE GEAR AND SHAFT DOWN FLOW ELECTRONIQUE
34	BU28112	1	WIRE HARNESS POWER 24V



PH 6700 DF 24V

PH6700-001